



TECHNICAL INFORMATION

**SEMSY<sup>®</sup> COMPACT**  
**NEW FEATURES AND CHANGES**  
SOFTWARE VERSION 5.4.24

Copyright © 2024 Dallmeier electronic GmbH & Co.KG

The reproduction, distribution and utilization of this document as well as the communication of its contents to others without express authorization is prohibited. Offenders will be held liable for the payment of damages.

All rights reserved in the event of the grant of a patent, utility model or design.

The manufacturer accepts no liability for damage to property or pecuniary damages arising due to minor defects of the product or documentation, e.g. print or spelling errors, and for those not caused by intention or gross negligence of the manufacturer.

Figures in this document may differ from the actual product.  
We reserve the right to make technical modifications.

All trademarks identified by ® are registered trademarks of Dallmeier.

Third-party trademarks are named for information purposes only.  
Dallmeier respects the intellectual property of third parties and always attempts to ensure the complete identification of third-party trademarks and indication of the respective holder of rights. In case that protected rights are not indicated separately, this circumstance is no reason to assume that the respective trademark is unprotected.

# ABSTRACT

This document contains information on new features and changes that are introduced with the current software version. Finally, the document provides an overview of the major innovations and changes that have been introduced with the various software versions.

# VALIDITY

This document applies to the SeMSy® Compact software.

# COMPATIBILITY

The appliance is compatible with the following hardware and software after the update to the current version:

- SeMSy® Recording Server V10 as of version 10.x.1
- SMAVIA Recording Server V9 as of version 9.x.10
- SMAVIA Recording Server V8 as of version 8.x.12
- SeMSy® Event Manager as of version 1.1.13
- PGuard advance as of version 4.7.2
- Operating system Microsoft Windows 10 and 11 (64 Bit)
- NVIDIA driver as of version 456.38



## **Software Download**

*The current software version of SeMSy® Compact is available in the download center at [www.dallmeier.com](http://www.dallmeier.com).*

# GENERAL NOTES

Note that

- this update is free of charge.
- the innovations are only generally described in this document.
- the use of some functions may require a license subject to charges.
- the Dallmeier support hot-line is always available for further questions.

# PREPARATION

Before installing SeMSy® Compact, the driver of the graphics cards should be updated. This is not required for the installation itself, but for the subsequent first start of SeMSy® Compact and the ongoing operation. The required version of the NVIDIA driver (at least 456.38, recommended 536.99) can be obtained from the Internet, for example at <https://www.nvidia.com/en-us/drivers/results/163532/>.

# UPDATE

SeMSy® Compact is only offered as a full installation. An older version can be updated by installing it into the existing installation directory, whereby the configuration is taken over. If the default settings of the new version are to be used, the old version must be uninstalled and the installation directory deleted.

# INSTALLATION

The installation of SeMSy® Compact must be done by a user with administrator rights for the operating system. After the installation SeMSy® Compact must be started at least once by this administrator, so that the necessary entries are written into the Windows registry and are then also available for users without administrator rights.

# DOWNGRADE

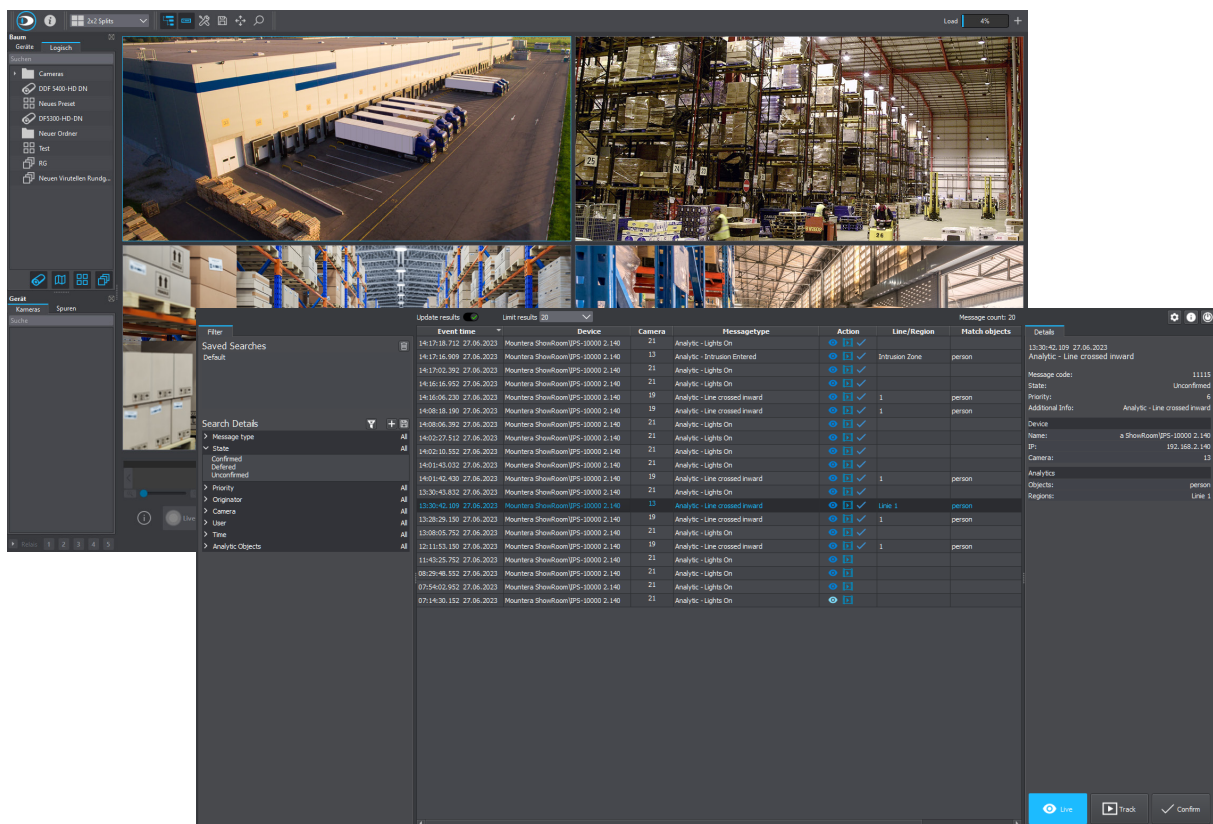
SeMSy® Compact introduces in version 5.2.3 (and thus in version 5.2.23, 5.3.31, etc. as well) a new encryption of the configuration file **ProgramData.bin**. If you want to change back to the old version 5.1.19 after the installation of version 5.2.3, 5.2.23 or 5.3.21, the configuration file must first be exported (Configuration -> Import/Export). After the installation of version 5.1.19 the file can then be imported accordingly.

# NEW FEATURES AND CHANGES

## SEMSY® EVENT MANAGER SUPPORTED

**Description** As of the current version, SeMSy® Compact supports the event-controlled activation of the display of live streams or recordings with the new SeMSy® Event Manager.

The SeMSy® Event Manager software is installed alongside SeMSy® Compact on a powerful workstation and operated as a system service. In addition to the activation of cameras in SeMSy® Compact, the SeMSy® Event Manager allows the evaluation of status and event messages from Dallmeier recording systems and cameras, which are stored in a local database after receipt. Individual filter functions and prioritization allow a focus on interesting messages.



Please refer to the separate SeMSy® Event Manager product specification and the information it contains on the supported cameras and recording systems.

Please also note that the current version of SeMSy® Compact continues to support the predecessor PGuard advanced (for event messages from older recording systems and cameras) on a transitional basis, even in parallel operation with SeMSy® Event Manager.

---

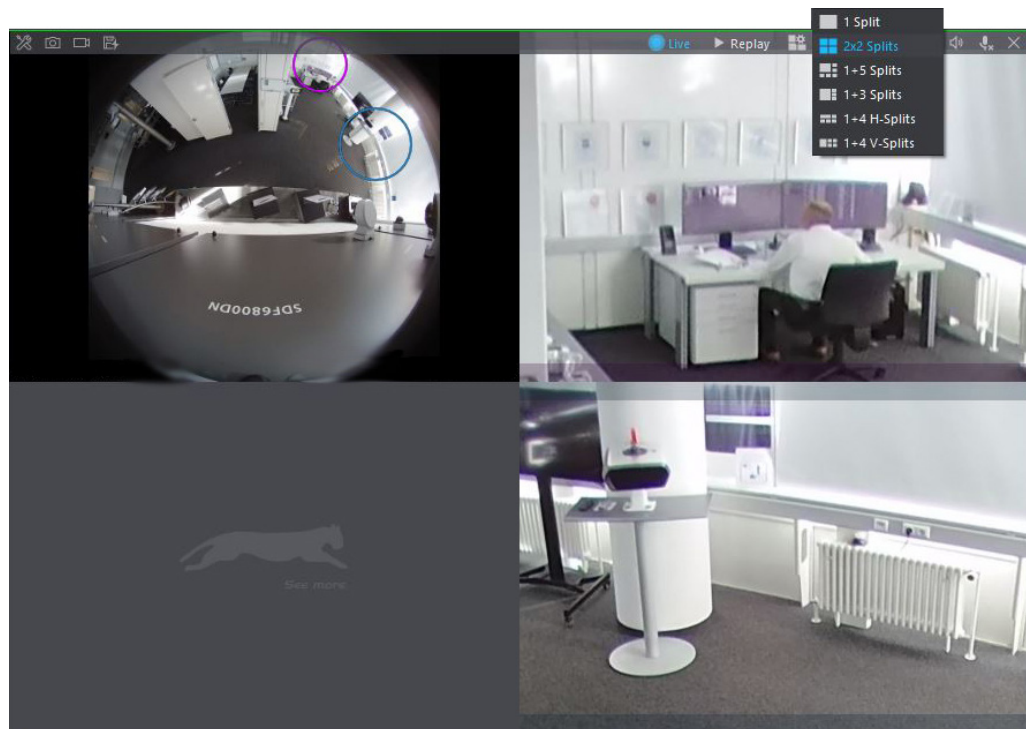
## SUB SPLITS SUPPORTED

---

**Description** As of the current version, SeMSy® Compact allows the use of sub-splits within a split window in which a camera is actively displayed.

This function is available for all camera types, but is particularly suitable for fisheye cameras whose all-round view is to be displayed in combination with interesting and dewarped image areas.

The number of sub-splits is set via the corresponding selection in the menu bar of the split window. The areas of interest for a dewarped display in a sub-split are defined by clicking the middle mouse button (scroll wheel button) in the all-round view.



If the camera is disconnected or the split window is closed, SeMSy® Compact saves the number of sub-splits and the currently displayed detail areas. When the camera display is reactivated, the saved sub-split view is automatically used again.

---

## RIGHT FOR MANUAL CONNECTIONS

---

**Description** The SeMSy® Compact user administration has been expanded to include the new ***Allow manual connections*** right. This allows the manual activation of the display of cameras from the camera tree to be activated or deactivated for individual user groups. The users of this group will then only see the live streams and recordings whose display has been automatically activated, for example event controlled by the SeMSy® Event Manager.

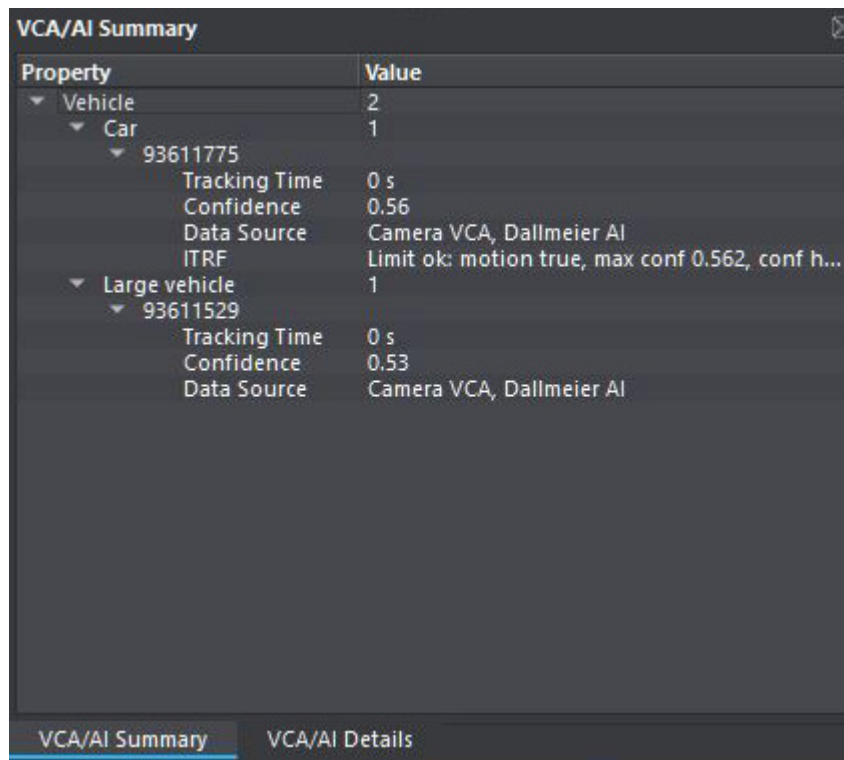
---

## DISPLAY OF VCA/AI SUMMARY

---

**Description** Already in earlier versions of SeMSy® Compact, a separate window for displaying **VCA/AI Details** could be displayed (bottom left by default) via the corresponding button in the menu bar. After selecting a VCA/AI event displayed in the split window with a left-click, all associated analytics data are displayed here.

The current version of SeMSy® compact has been expanded with a **VCA/AI Summary** window.



The screenshot shows a window titled "VCA/AI Summary" with a close button in the top right corner. The window contains a table with two columns: "Property" and "Value". The data is organized into a tree structure with expandable sections.

Property	Value
Vehicle	2
Car	1
93611775	
Tracking Time	0 s
Confidence	0,56
Data Source	Camera VCA, Dallmeier AI
ITRF	Limit ok: motion true, max conf 0.562, conf h...
Large vehicle	1
93611529	
Tracking Time	0 s
Confidence	0,53
Data Source	Camera VCA, Dallmeier AI

At the bottom of the window, there are two tabs: "VCA/AI Summary" (which is active and highlighted with a blue underline) and "VCA/AI Details".

The **VCA/AI Summary** displays the analytics data of all VCA/AI events displayed in the active split window, like the data of two simultaneously detected vehicles in this example.

---

## DOMERA® EDGERECORDING SUPPORTED

---

**Description** The current version of SeMSy® Compact has been extended for direct access (without recorder as proxy) to the latest cameras of the Domera® series. In addition to the usual display of the live stream, SeMSy® Compact can now also directly access the local recordings of the camera.

Please note that the camera must be equipped with an optional SD card for local recording (EdgeRecording).

---

## QUICK BACKUPS SUPPORTED

---

**Description** As of the current version, SeMSy® Compact offers the option of triggering short backups directly in the split window during playback of a recording. The corresponding button has been integrated in the menu bar of the split window at the top left.

The duration of the quick backup can be defined in the *Configuration* under *Local Tracks / Quick Backup* with a lead and lag time at the time currently displayed in the split window.

---

## GENERAL OPTIMIZATIONS

---

**Description** Various optimizations have been integrated into the current version of SeMSy® Compact in the course of general system maintenance:

- Detail views for PRemote connections **HD 720** resolution supported
- Dewarped display of fisheye cameras in **1 Split** view via PRemote supported
- Output of audio streams encoded with the Opus codec
- Date format can be set in English (dd/mm/yyyy or mm/dd/yyyy)
- Triggering of 3rd party camera actions (Redvision) via overlay menu in split window
- Triggering of camera actions (Dallmeier) and relays via overlay menu in split window
- Display of symbols for VCA/AI objects in timeline after search with SmartFinder



# CHANGE HISTORY

Below you will find tabular overviews of the major innovations and changes that have been introduced with the various software releases.

New / Changed Features	Software Version												
	5.1.10 (2021-02-26)	5.1.19 (2021-05-05)	5.2.3 (2021-07-26)	5.2.23 (2022-02-16)	5.3.21 (2022-08-04)	5.3.42 (2023-01-15)	5.4.24 (2023-11-08)						
Automatic disconnection	o	x	x	x	x	x	x						
Right for manual connections (PRemote advance)	o	x	x	x	x	x	x						
OpenSSL Security Fix CVE-2021-3450 and CVE-2021-3449	o	x	x	x	x	x	x						
PRemote-HD filter optimized	o	x	x	x	x	x	x						
Display of external split views optimized	o	x	x	x	x	x	x						
Search in defined period on several days	o	o	x	x	x	x	x						
Search with object size filter	o	o	x	x	x	x	x						
Display of search criteria with tooltip	o	o	x	x	x	x	x						
User rights for camera and track selection	o	o	x	x	x	x	x						
Individual encryption of the configuration data	o	o	x	x	x	x	x						
Integration Panomera® Streaming Server III	o	o	x	x	x	x	x						
Panomera® live warning	o	o	o	x	x	x	x						
SmartFinder for DOMERA® fisheye cameras	o	o	o	x	x	x	x						
Display of analytics confidence	o	o	o	x	x	x	x						
Combined Panomera® View and Monitorwall	o	o	o	x	x	x	x						
Extended function Flight Data Display supported	o	o	o	o	x	x	x						
Licensing of extended functions with the SeMSy® Compact Pro Dongle	o	o	o	o	x	x	x						

New / Changed Features	Software Version												
	5.1.10 (2021-02-26)	5.1.19 (2021-05-05)	5.2.3 (2021-07-26)	5.2.23 (2022-02-16)	5.3.21 (2022-08-04)	5.3.42 (2023-01-15)	5.4.24 (2023-11-08)						
Optional maintenance license for extended functions	o	o	o	o	x	x	x						
Dialog for managing licenses for extended functions	o	o	o	o	x	x	x						
Setting the number of modules with full resolution in Panomera® Eco Mode	o	o	o	o	x	x	x						
Output of the technical transmission data of the received video streams	o	o	o	o	x	x	x						
Window for displaying analytics details	o	o	o	o	x	x	x						
Presets for displaying analytics details in the split	o	o	o	o	x	x	x						
Support Pixelation AI Server 3.1.0	o	o	o	o	x	x	x						
SmartFinder optimized for fisheye cameras at 360° view	o	o	o	o	x	x	x						
Translations of the user interface optimized and extended	o	o	o	o	x	x	x						
Presets with Detail Views and function keys	o	o	o	o	o	x	x						
Detail Views with analytics data	o	o	o	o	o	x	x						
Redundancy for SeMSy® Compact Pro Dongle	o	o	o	o	o	x	x						
Extended time of use of comfort functions	o	o	o	o	o	x	x						
Right for context menu in splits	o	o	o	o	o	x	x						
SeMSy® Event Manager supported	o	o	o	o	o	o	x						
Sub-splits supported	o	o	o	o	o	o	x						
Right for manual connections (SeMSy® Event Manager)	o	o	o	o	o	o	x						
Display of VCA/AI Summary	o	o	o	o	o	o	x						
Domera® EdgeRecording supported	o	o	o	o	o	o	x						

New / Changed Features	Software Version							
	5.1.10 (2021-02-26)	5.1.19 (2021-05-05)	5.2.3 (2021-07-26)	5.2.23 (2022-02-16)	5.3.21 (2022-08-04)	5.3.42 (2023-01-15)	5.4.24 (2023-11-08)	
Quick backups supported								

x = New/changed feature available in software version

o = New/changed feature not available in software version



HEAD & ACCOUNTS OFFICE

Dallmeier electronic GmbH & Co.KG  
Bahnhofstr. 16  
93047 Regensburg  
Germany

tel +49 941 8700 0  
fax +49 941 8700 180  
mail [info@dallmeier.com](mailto:info@dallmeier.com)

[www.dallmeier.com](http://www.dallmeier.com)