

Dallmeier

Panomera Macro to configure Visual tracking in Genetec

Description

English

Information about Copyright

© 2022 Dallmeier electronic

The reproduction, distribution and utilization of this document as well as the communication of its contents to others without express authorization is prohibited. Offenders will be held liable for the payment of damages. All rights reserved in the event of the grant of a patent, utility model or design.

We reserve the right to make technical modifications.

The manufacturer accepts no liability for damage to property or pecuniary damages arising due to minor defects of the product or documentation, e.g. print or spelling errors, and for those not caused by intention or gross negligence of the manufacturer.

Dallmeier electronic GmbH & Co.KG
Bahnhofstraße 16
93047 Regensburg, Germany

www.dallmeier.com
info@dallmeier.com



See more.

Panomera Macro to configure Visual tracking in Genetec

The feature “Visual tracking” allows easy navigation of the Panomera camera. To ease the configuration, the Panomera offers a geometry interface. In Genetec, a Macro can be used to collect the geometry information from the Panomera and configure the Visual tracking zones automatically.

1. Add the Panomera modules into Genetec

1.1. Prerequisites: Configuration of Panomera modules

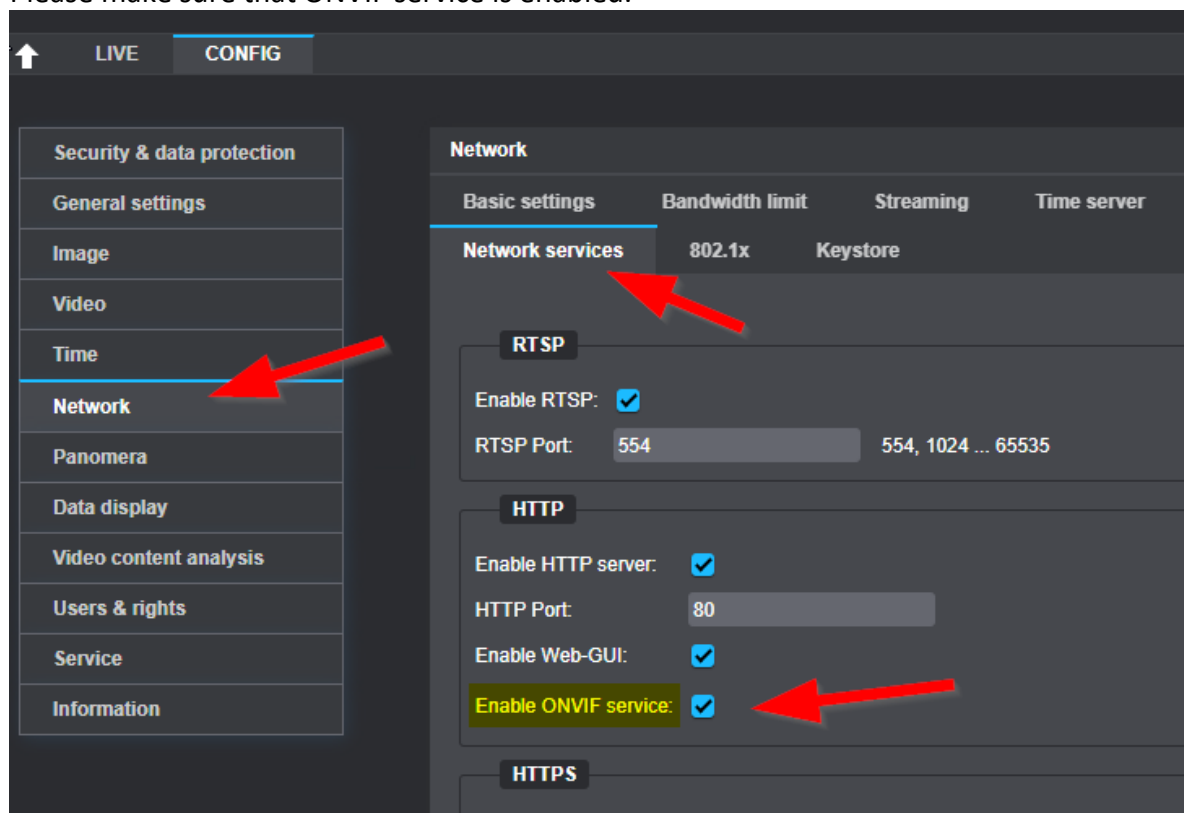
It is important that the Codecs of the Streams are in a defined state before adding the camera to the Genetec system. Once added, changing the video codec of a camera is not possible.

Please note: Each module of a Panomera is added as a separate camera, so this step has to be repeated for each Panomera module.

1.1.1. Configure the Panomera modules

Open the WebConfig of the Panomera module by opening the IP address of the module in a web browser.

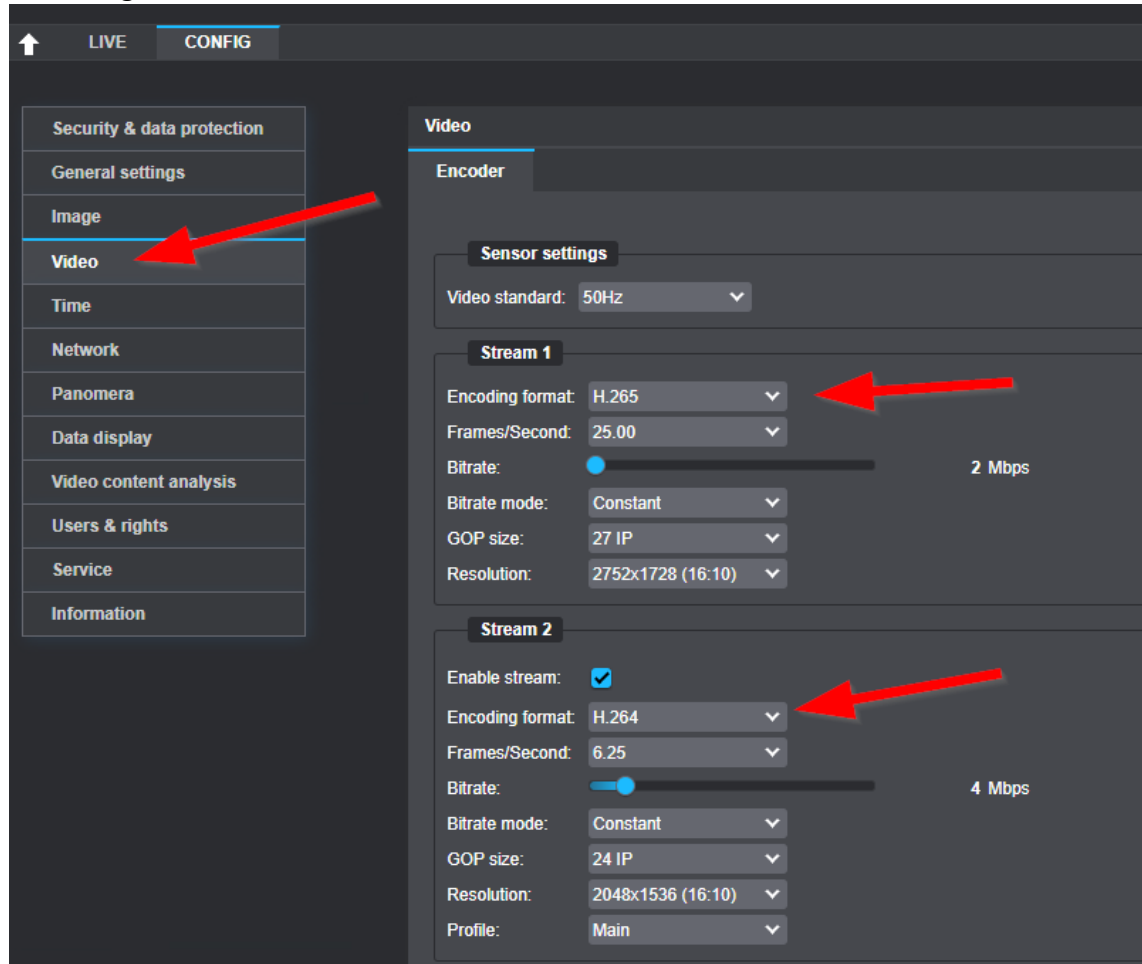
Please make sure that ONVIF service is enabled.



See more.

Before adding the Panomera Camera to the Genetec System, please make sure that the desired codec is configured for Encoder 1. And that a different encoder is configured for Encoder 2.

Assuming h.265/AVC shall be used:



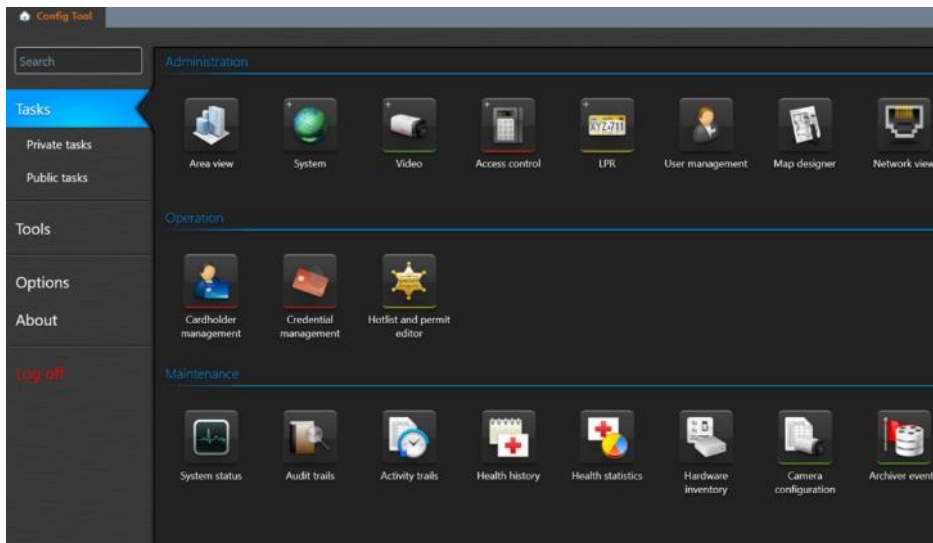
Please note: Each Panomera module has to be configured accordingly.



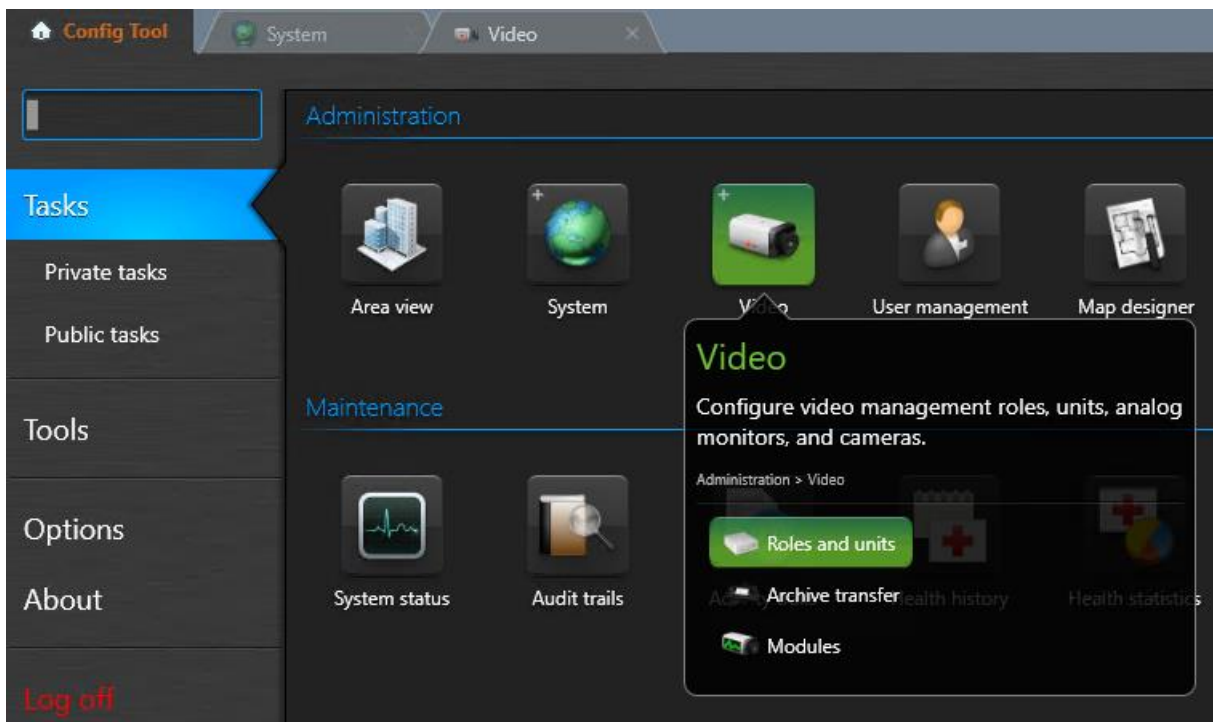
See more.

1.2. Add the Panomera modules into Genetec

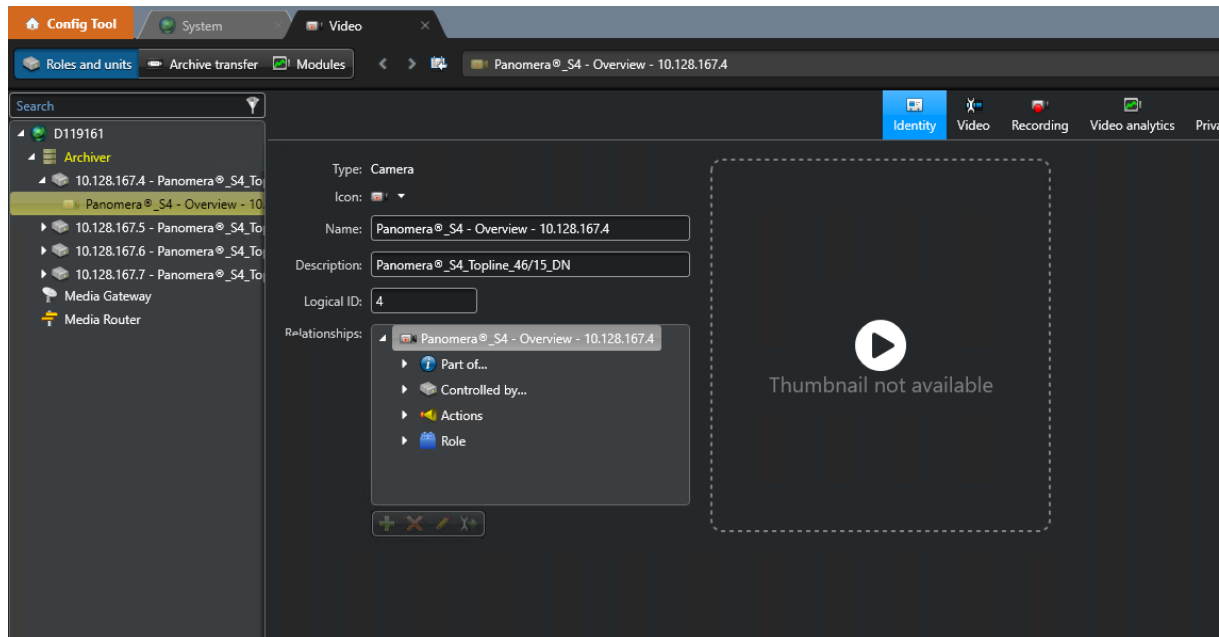
1.2.1. Start Genetec „Config Tool“



1.2.2. Click on “Video” → “Roles and Units”



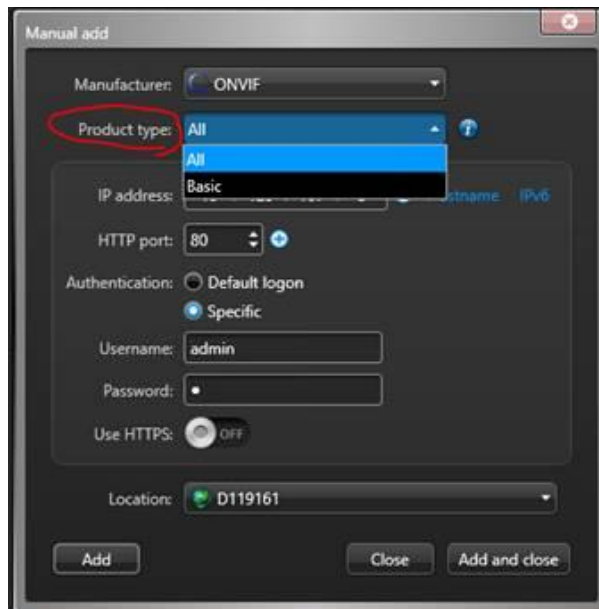
1.2.3. Open the tree and click on the camera of the master module



Left-click on the tree on the Left and choose “add an entry”.

1.2.4. Add each Panomera module

Please select Product type “All” to enable the use of H.265/HEVC.
Enter the IP address and credentials and click add.



Hint: multiple modules can be added subsequently by giving the respective IP address and click add - without closing this window.

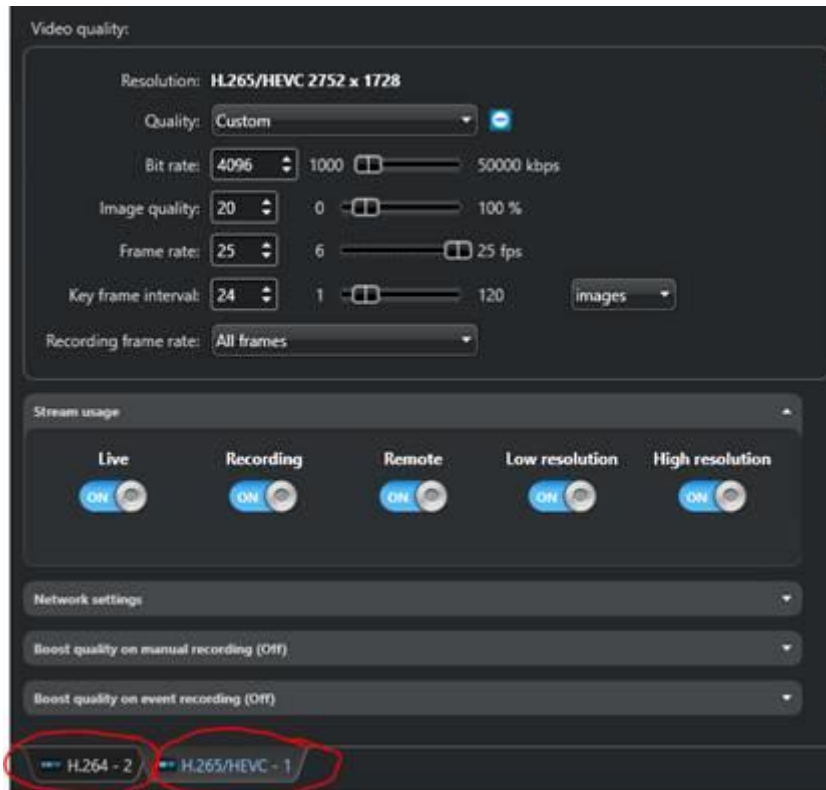
Wait until all modules are added.



See more.

1.2.5. Check the configured codecs in Genetec (optional)

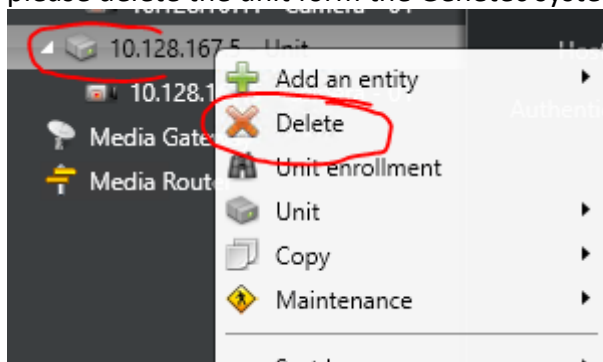
For each module added, the configured encoders can be checked the following:
Open the tree in “Rules and units” click on the respective unit and check the order of the video codecs.



The number behind the video codec represents the number of the stream on the camera.

1.2.6. If you need to change the video codecs

- please delete the unit form the Genetec system

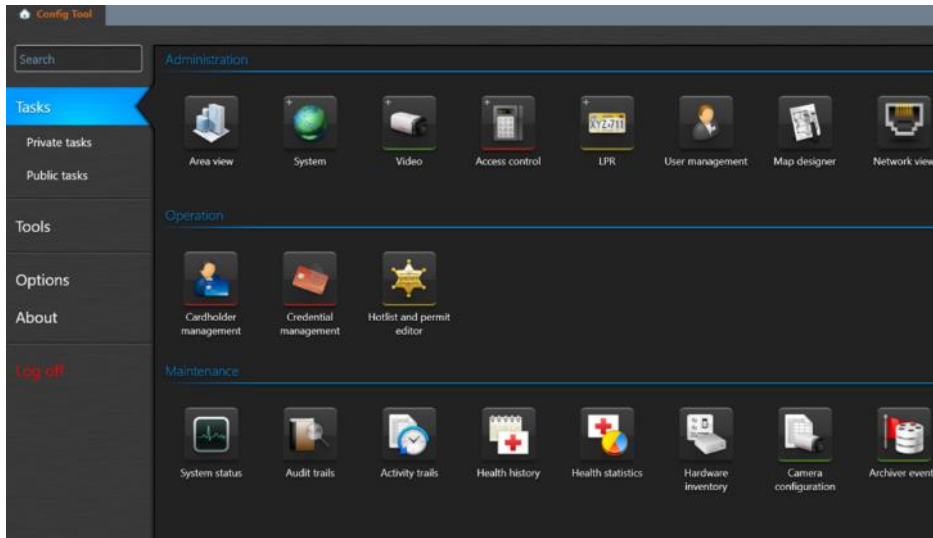


- configure the module as described above using WebConfig of the Dallmeier camera
- re-add the module to Genetec

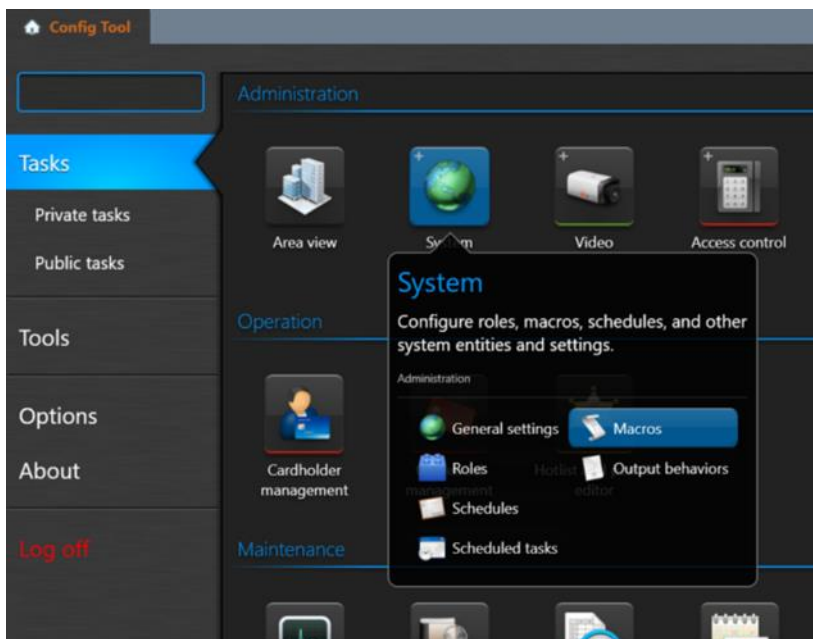
2. Execute the Macro

2.1. Preparation

2.1.1. Start Genetec „Config Tool“

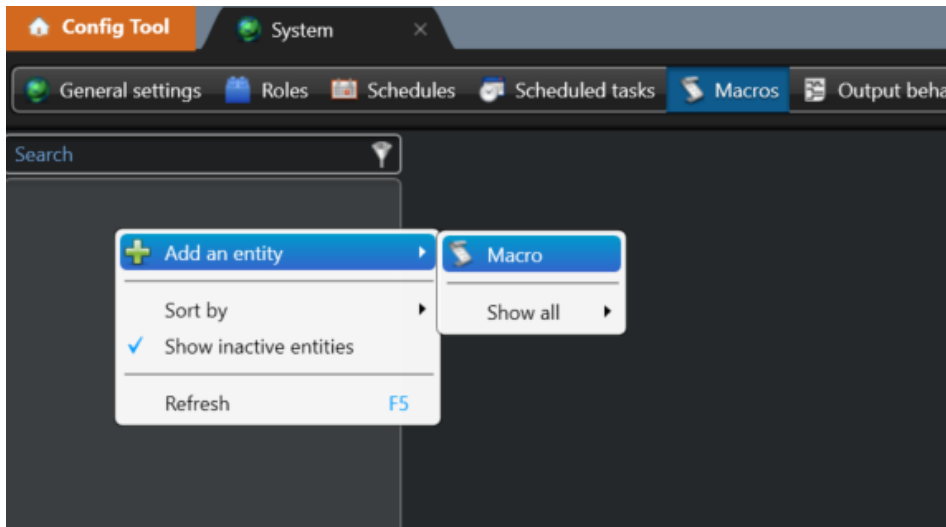


2.1.2. Go to “System” → “Macros”

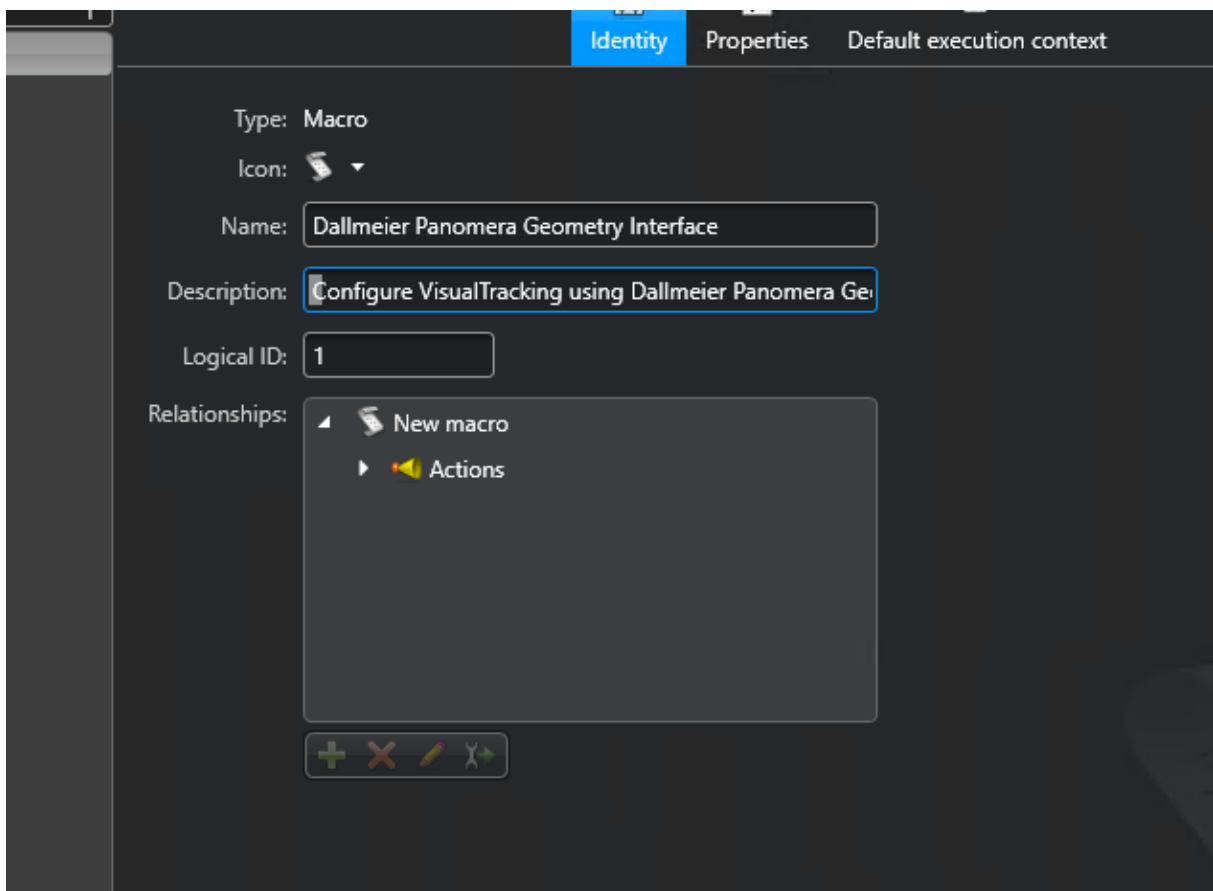


2.1.3. Right click → “Add an entity” → “Macro”

Hint: In case the Macro has already been added, this step can be skipped.

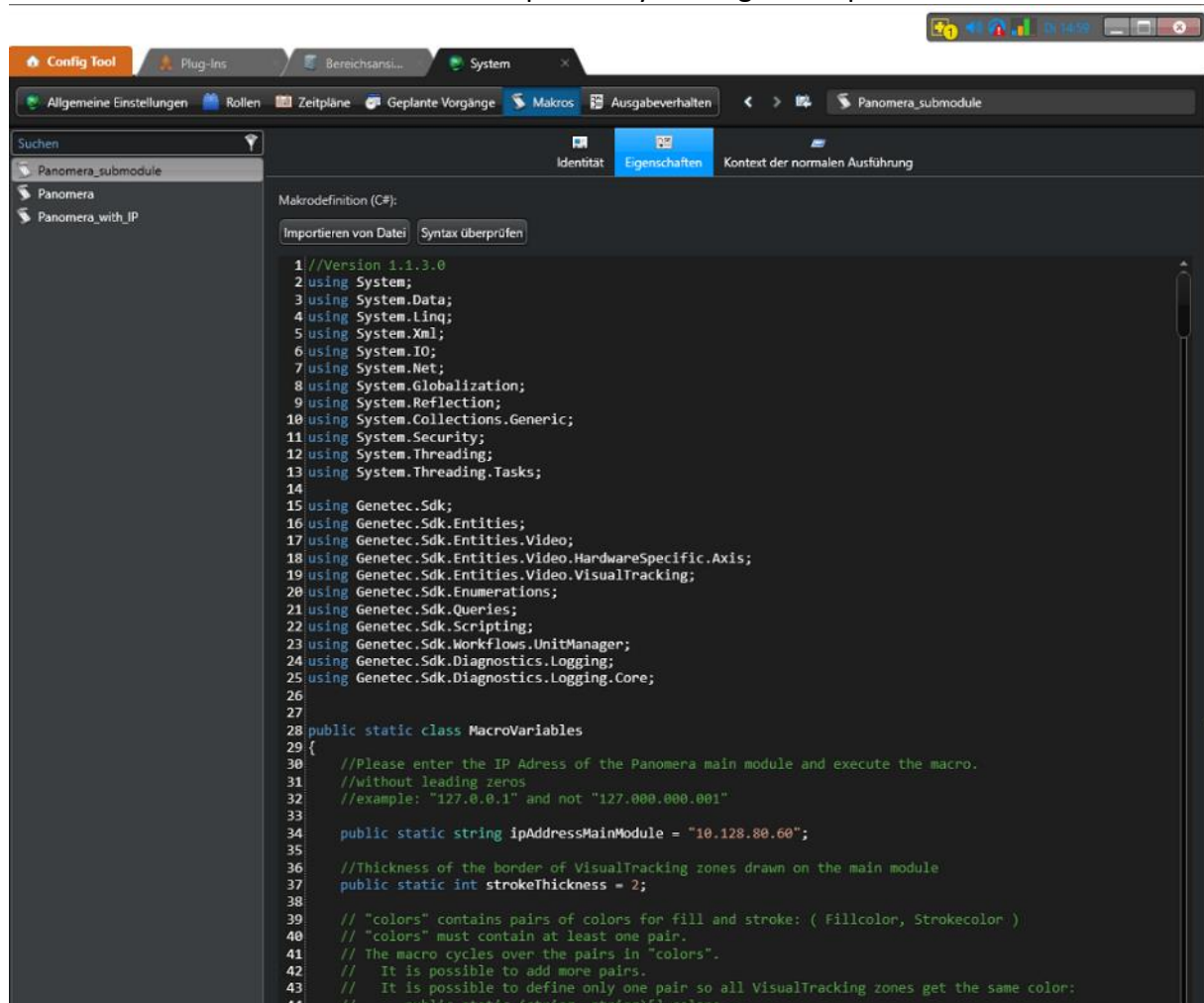


2.1.4. Create a new Macro with a speaking name



2.1.5. Copy the Macro code into the text box at “Properties”

Hint: The Macro code file can also be imported by clicking on “Import from file”.



2.2. Parameters for the appearance of the VisualTracking zones

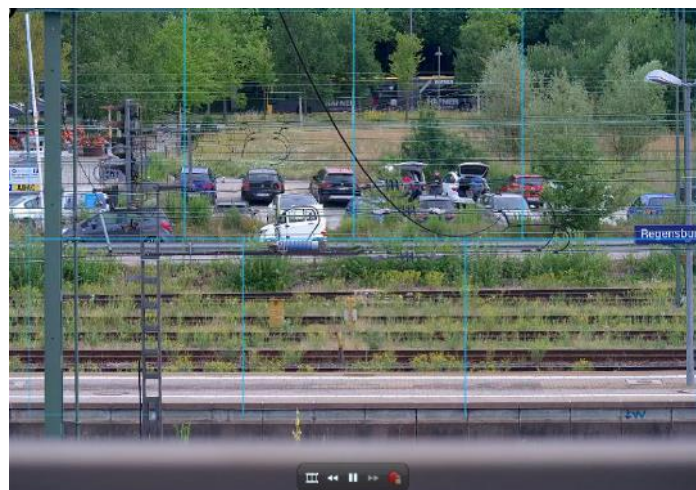
In the top of the macro, the visual appearance of the VisualTracking zones can be defined.

The color of fill and border can be defined separately. It is possible to define the border thickness and the opacity of the shape.

It is also possible to configure a VisualTracking zone on each sub module which leads back to the main module of the Panomera.

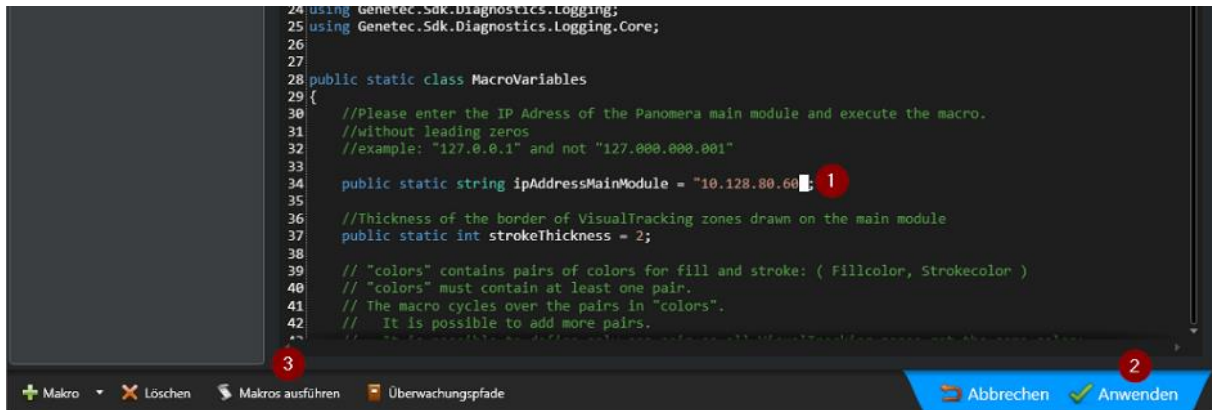
Please refer to the macro for a detailed description of the parameters.

The current default settings will generate zones like in the image on the right. Quite transparent fill with blue borders.



See more.

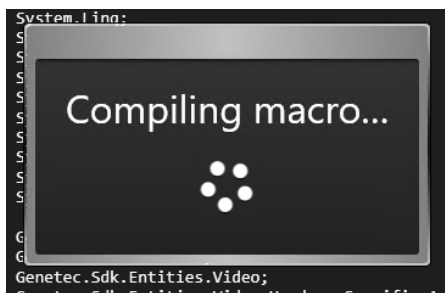
2.3. For each Panomera camera, repeat the following three steps:



2.3.1. Step 1: Enter the IP address of the main module

Please enter the IP Address of the Panomera main module without leading zeros
Correct: "127.0.0.1", wrong: "127.000.000.001"

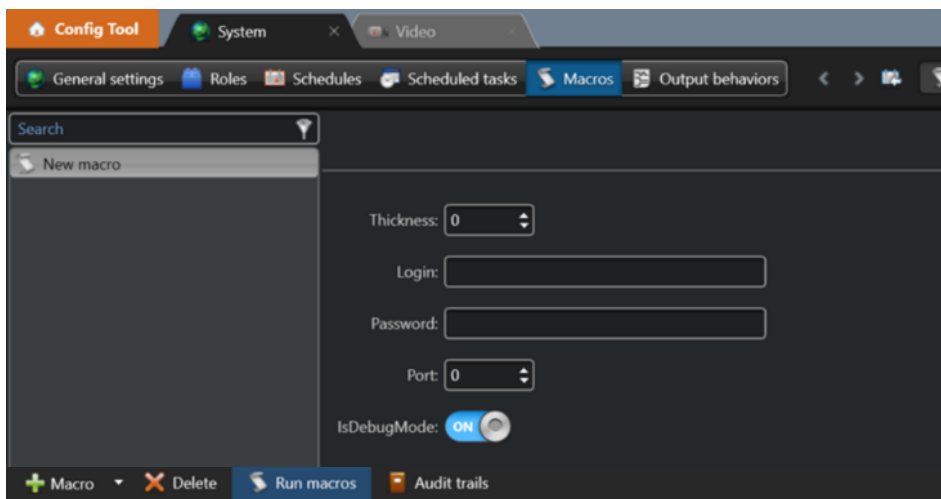
2.3.2. Step 2: Click "Apply" and the Macro will be compiled



2.3.3. Step 3: Enter the credentials of the Panomera and run the Macro

Please enter the credentials for the Panomera to be configured.

If different Panomera cameras with different credentials are to be configured, please repeat this step for each set of username/password.

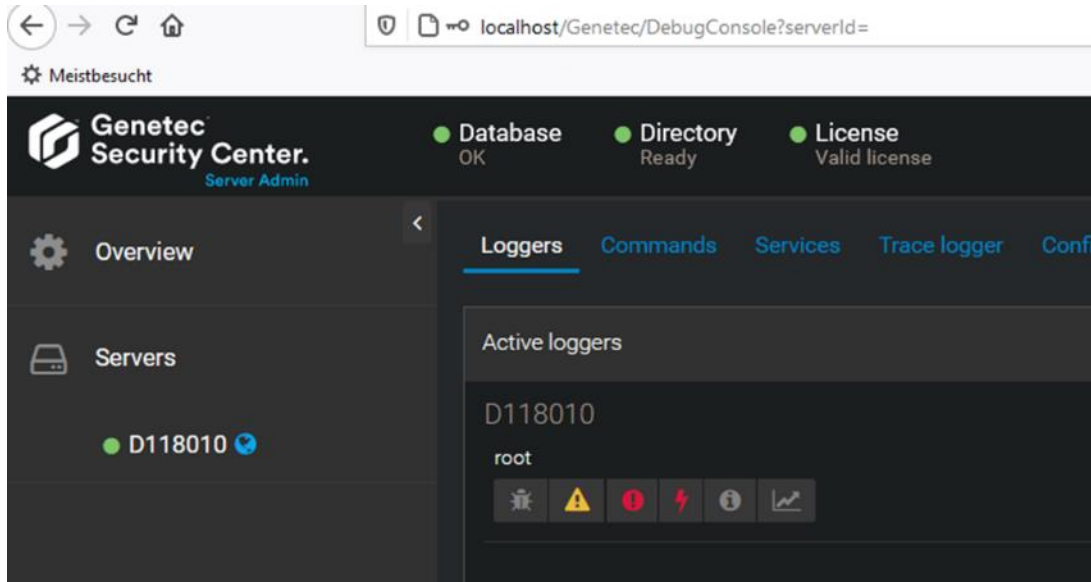


See more.

3. Open DebugConsole (optional)

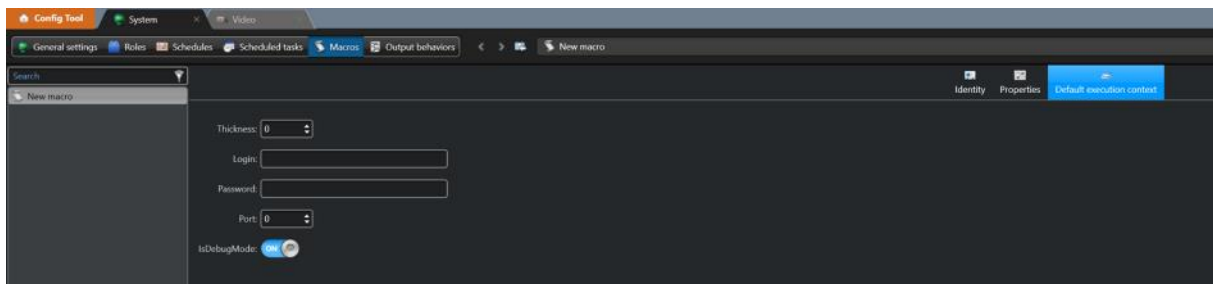
3.1. Browser: <http://localhost/Genetec/DebugConsole> and log in

3.2. Select Filter warning, error and fatal:



3.3. Switch back to Genetec “Config Tool”

3.3.1. go to Default execution connect → set IsDebugMode = on

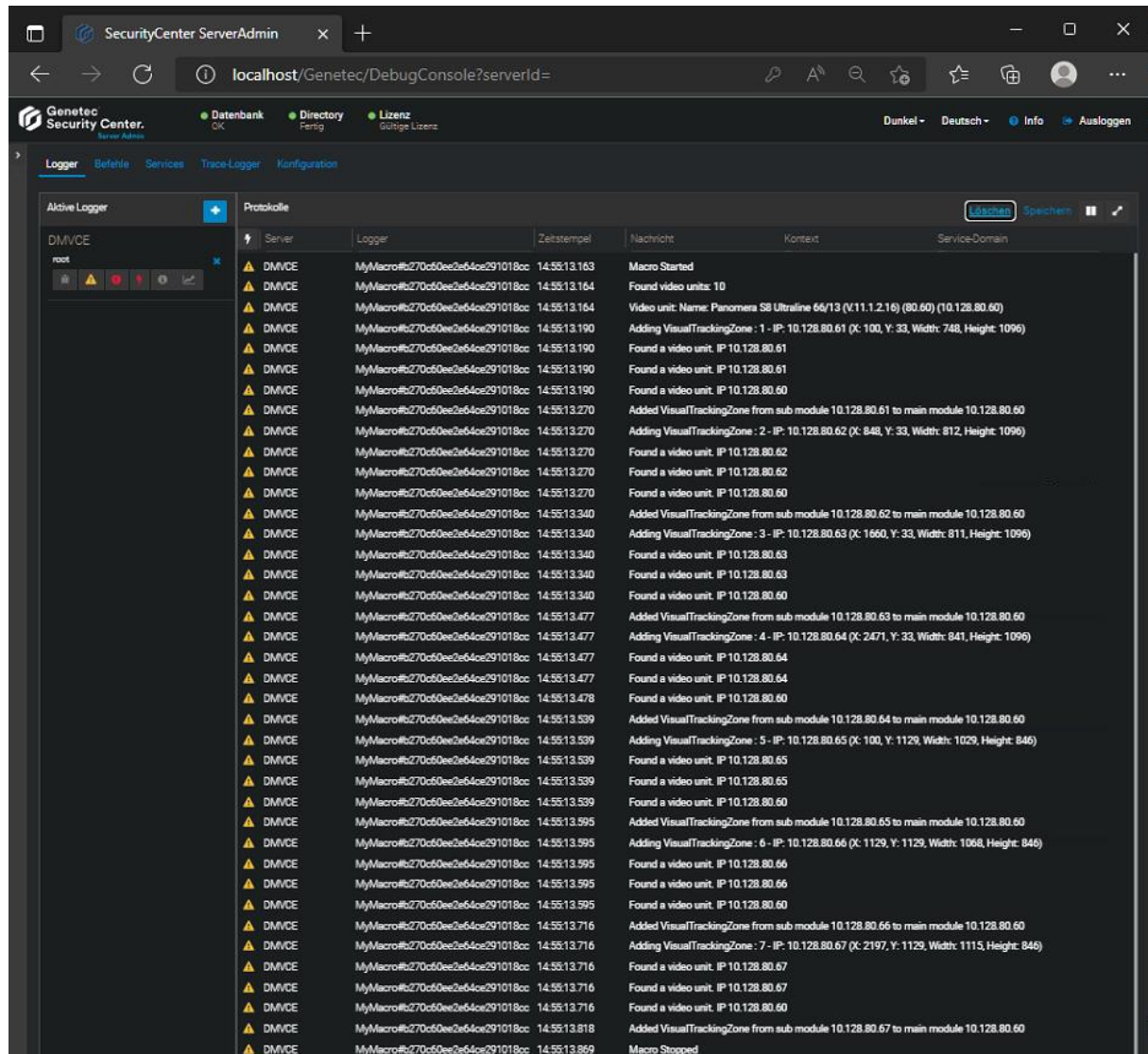


3.3.2. Run the Macro



3.4. Debug console: Check for output from the Macro

In case of different Panomera cameras configured to the Genetec system with different credentials, error messages can occur for the other cameras with non-matching credentials.



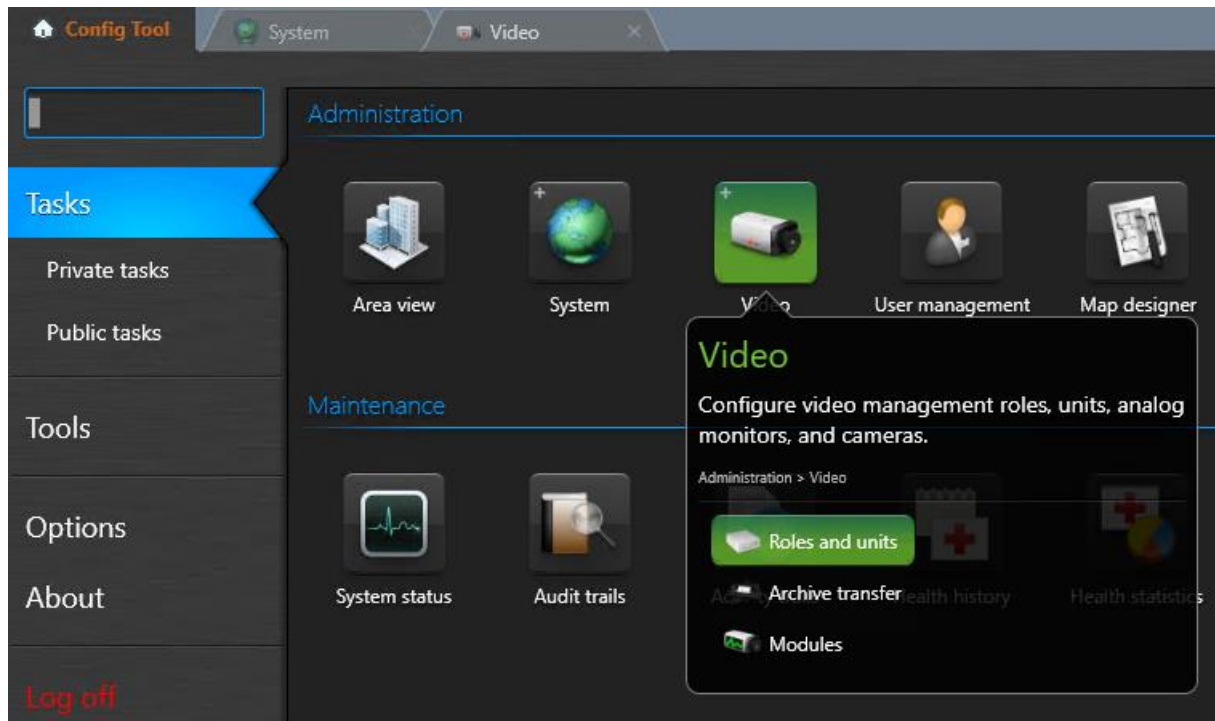
Server	Logger	Zeitstempel	Nachricht	Kontext	Service-Domain
DMVCE	MyMacro#b270c60ee2e64ce291018cc	14:55:13.163	Macro Started		
DMVCE	MyMacro#b270c60ee2e64ce291018cc	14:55:13.164	Found video units: 10		
DMVCE	MyMacro#b270c60ee2e64ce291018cc	14:55:13.164	Video unit: Name: Panomera S8 Ultraline 66/13 (V11.1.2.16) (80.60) (10.128.80.60)		
DMVCE	MyMacro#b270c60ee2e64ce291018cc	14:55:13.190	Adding VisualTrackingZone : 1 - IP: 10.128.80.61 (X: 100, Y: 33, Width: 748, Height: 1096)		
DMVCE	MyMacro#b270c60ee2e64ce291018cc	14:55:13.190	Found a video unit. IP 10.128.80.61		
DMVCE	MyMacro#b270c60ee2e64ce291018cc	14:55:13.190	Found a video unit. IP 10.128.80.61		
DMVCE	MyMacro#b270c60ee2e64ce291018cc	14:55:13.190	Found a video unit. IP 10.128.80.60		
DMVCE	MyMacro#b270c60ee2e64ce291018cc	14:55:13.270	Added VisualTrackingZone from sub module 10.128.80.61 to main module 10.128.80.60		
DMVCE	MyMacro#b270c60ee2e64ce291018cc	14:55:13.270	Adding VisualTrackingZone : 2 - IP: 10.128.80.62 (X: 848, Y: 33, Width: 812, Height: 1096)		
DMVCE	MyMacro#b270c60ee2e64ce291018cc	14:55:13.270	Found a video unit. IP 10.128.80.62		
DMVCE	MyMacro#b270c60ee2e64ce291018cc	14:55:13.270	Found a video unit. IP 10.128.80.62		
DMVCE	MyMacro#b270c60ee2e64ce291018cc	14:55:13.270	Found a video unit. IP 10.128.80.60		
DMVCE	MyMacro#b270c60ee2e64ce291018cc	14:55:13.340	Added VisualTrackingZone from sub module 10.128.80.62 to main module 10.128.80.60		
DMVCE	MyMacro#b270c60ee2e64ce291018cc	14:55:13.340	Adding VisualTrackingZone : 3 - IP: 10.128.80.63 (X: 1660, Y: 33, Width: 811, Height: 1096)		
DMVCE	MyMacro#b270c60ee2e64ce291018cc	14:55:13.340	Found a video unit. IP 10.128.80.63		
DMVCE	MyMacro#b270c60ee2e64ce291018cc	14:55:13.340	Found a video unit. IP 10.128.80.63		
DMVCE	MyMacro#b270c60ee2e64ce291018cc	14:55:13.340	Found a video unit. IP 10.128.80.60		
DMVCE	MyMacro#b270c60ee2e64ce291018cc	14:55:13.477	Added VisualTrackingZone from sub module 10.128.80.63 to main module 10.128.80.60		
DMVCE	MyMacro#b270c60ee2e64ce291018cc	14:55:13.477	Adding VisualTrackingZone : 4 - IP: 10.128.80.64 (X: 2471, Y: 33, Width: 841, Height: 1096)		
DMVCE	MyMacro#b270c60ee2e64ce291018cc	14:55:13.477	Found a video unit. IP 10.128.80.64		
DMVCE	MyMacro#b270c60ee2e64ce291018cc	14:55:13.477	Found a video unit. IP 10.128.80.64		
DMVCE	MyMacro#b270c60ee2e64ce291018cc	14:55:13.478	Found a video unit. IP 10.128.80.60		
DMVCE	MyMacro#b270c60ee2e64ce291018cc	14:55:13.539	Added VisualTrackingZone from sub module 10.128.80.64 to main module 10.128.80.60		
DMVCE	MyMacro#b270c60ee2e64ce291018cc	14:55:13.539	Adding VisualTrackingZone : 5 - IP: 10.128.80.65 (X: 100, Y: 1129, Width: 1029, Height: 846)		
DMVCE	MyMacro#b270c60ee2e64ce291018cc	14:55:13.539	Found a video unit. IP 10.128.80.65		
DMVCE	MyMacro#b270c60ee2e64ce291018cc	14:55:13.539	Found a video unit. IP 10.128.80.65		
DMVCE	MyMacro#b270c60ee2e64ce291018cc	14:55:13.539	Found a video unit. IP 10.128.80.60		
DMVCE	MyMacro#b270c60ee2e64ce291018cc	14:55:13.595	Added VisualTrackingZone from sub module 10.128.80.65 to main module 10.128.80.60		
DMVCE	MyMacro#b270c60ee2e64ce291018cc	14:55:13.595	Adding VisualTrackingZone : 6 - IP: 10.128.80.66 (X: 1129, Y: 1129, Width: 1068, Height: 846)		
DMVCE	MyMacro#b270c60ee2e64ce291018cc	14:55:13.595	Found a video unit. IP 10.128.80.66		
DMVCE	MyMacro#b270c60ee2e64ce291018cc	14:55:13.595	Found a video unit. IP 10.128.80.66		
DMVCE	MyMacro#b270c60ee2e64ce291018cc	14:55:13.595	Found a video unit. IP 10.128.80.60		
DMVCE	MyMacro#b270c60ee2e64ce291018cc	14:55:13.716	Added VisualTrackingZone from sub module 10.128.80.66 to main module 10.128.80.60		
DMVCE	MyMacro#b270c60ee2e64ce291018cc	14:55:13.716	Adding VisualTrackingZone : 7 - IP: 10.128.80.67 (X: 2197, Y: 1129, Width: 1115, Height: 846)		
DMVCE	MyMacro#b270c60ee2e64ce291018cc	14:55:13.716	Found a video unit. IP 10.128.80.67		
DMVCE	MyMacro#b270c60ee2e64ce291018cc	14:55:13.716	Found a video unit. IP 10.128.80.67		
DMVCE	MyMacro#b270c60ee2e64ce291018cc	14:55:13.716	Found a video unit. IP 10.128.80.60		
DMVCE	MyMacro#b270c60ee2e64ce291018cc	14:55:13.818	Added VisualTrackingZone from sub module 10.128.80.67 to main module 10.128.80.60		
DMVCE	MyMacro#b270c60ee2e64ce291018cc	14:55:13.869	Macro Stopped		



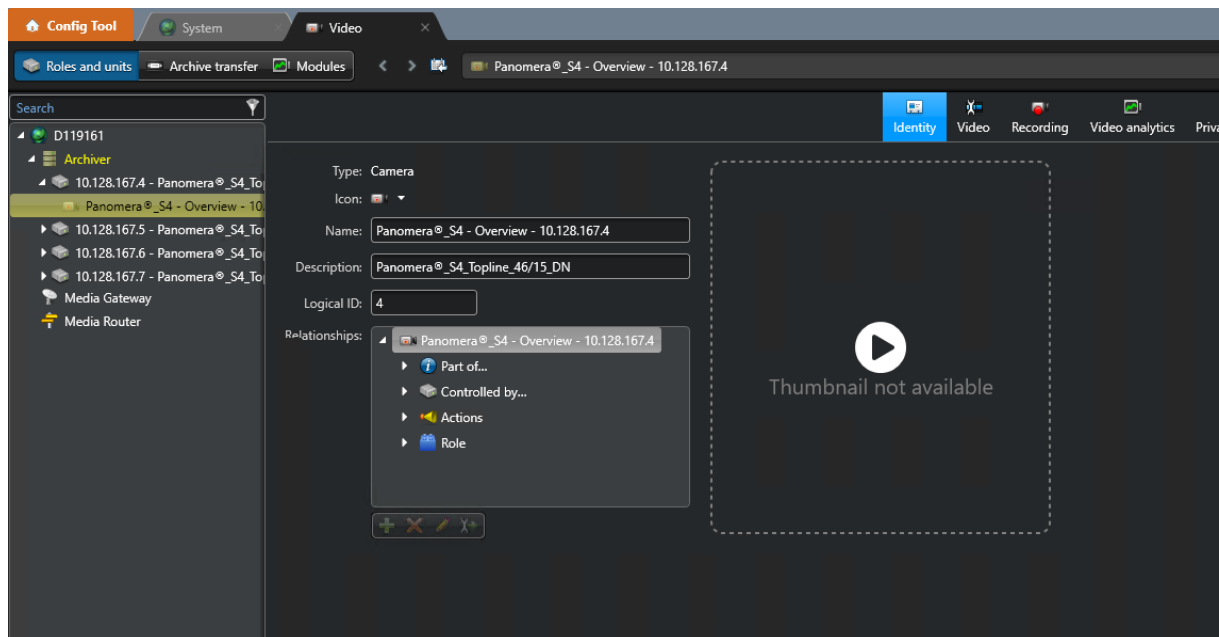
See more.

4. Manual check and adjust using Genetec “Config Tool” (optional)

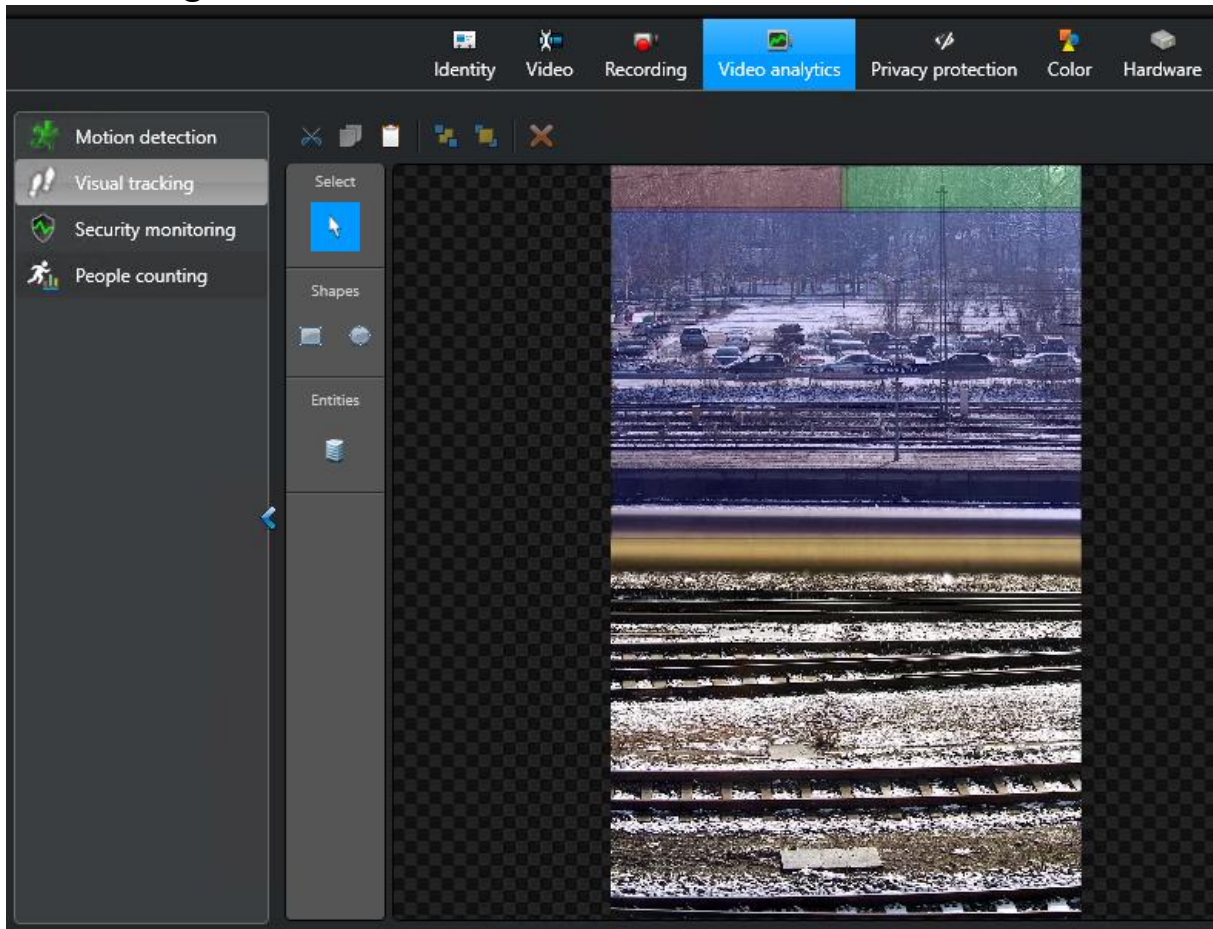
4.1. Click on “Video” → “Roles and Units”



4.2. Open the tree and click on the camera of the master module

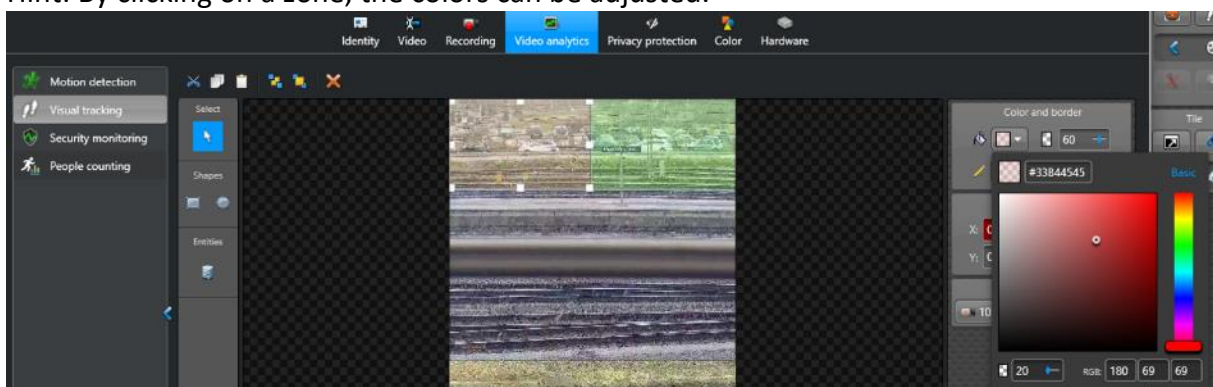


4.3. Click on “Video Analysis” → “Visual tracking” and check the configured zones



4.4. Adjust colors of configured zones (optional)

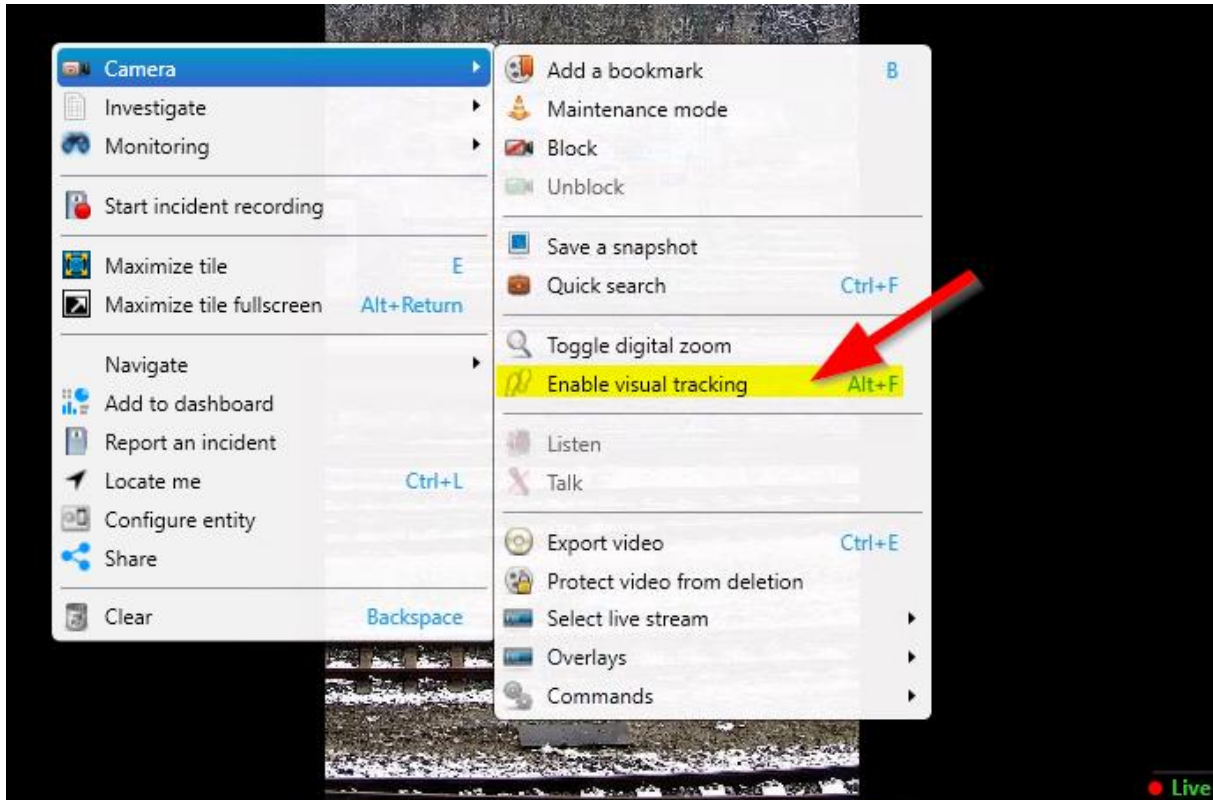
Hint: By clicking on a zone, the colors can be adjusted.



5. Activate Visual tracking in Genetec Security Desk

Open the video of the Panomera master module.

Right click "Camera" → "Enable visual tracking":



6. Hints and Tricks

Please note: it seems digital zoom is deactivated as soon as VisualTracking is enabled.

From the main module it is possible to navigate to sub modules by

- left clicking on the VisualTracking zone
 - drag&drop a VisualTracking zone to a different split.
- VisualTracking activated/deactivated seems to be bound to a split. So in case VisualTracking is not activated on the split the zone is dragged to, zooming into the module is possible there.



See more.

7. Changelog

- 1.0.1.1 Initial Version
- 1.0.2.1 Switch to Onvif Driver "All"
Revised color scheme: less dominant colors
- 1.1.0.0 Revised processing of the Macro. Instead of scanning all cameras for Panomera, the Macro only configures one Panomera at a time. Therefore, the IP of the main module of the Panomera to be configured needs to be given.
- 1.1.1.0 Intermediate Version
- 1.1.2.0 Intermediate Version
- 1.1.3.0 Enhanced configuration of VisualTracking zones:
 - Possibility to define color of border and fill
 - Possibility to define border thickness
 - Possibility to define additional opacity of VisualTracking zonesPossibility to configure VisualTracking zone on each sub module back to the main module

