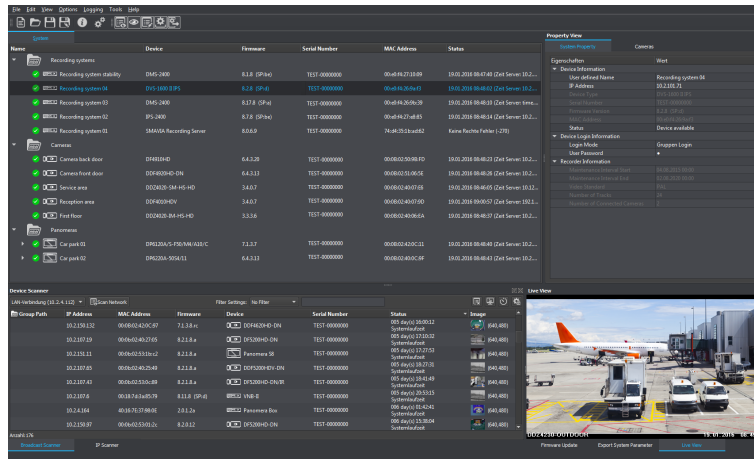


PService3

Application for the configuration and administration of VideoIP systems



PService3 is a powerful application for the convenient configuration and administration of comprehensive Dallmeier VideoIP systems. PService3 scans the video network for Dallmeier devices, automatically detects them and displays them in an overview. Thus, both cameras and recording systems can be managed conveniently. The comprehensive functions range from changing of IP addresses and updates of the integrated software to the direct opening of the configuration dialogs.

Network Scan

PService3 scans the VideoIP network for Dallmeier devices and lists them in an overview. If desired, PService3 provides the list with camera previews and filtered according to various criteria.

Structuring

The independent and easy allocation of the recognized recording systems and cameras to various virtual systems allows for an easy and structured display of the entire VideoIP system.

Update

PService3 enables the execution of updates for all components available in the network. Devices with identical software version can be updated simultaneously.

Location-independent

PService3 saves the structure and data of the defined virtual systems. Not only for a local network but also for independent networks of different objects when installed on a mobile device.

All-in-One

The variety of integrated tools makes PService3 a central and complete service instrument. PService3 is thus the next step in development and the perfect substitute for the specific and dedicated Dallmeier tools of the past.

Panomera® AutoCalibration

The Panomera® AutoCalibration add-on enables automatic calibration of Panomera® systems. The individual sensors of the system are optimally aligned against each other by a digital fine alignment of the image section in order to achieve a seamless overall image.

DMVC 2 Server Configuration

PService3 allows the configuration of a DMVC 2 server for connecting a local network of several Dallmeier recording systems to the Internet. Thus, all recordings can be accessed via the DMVC 2 App smartphone application independent of time and location.

Further Features

- Compatible with all Dallmeier recording systems
- Compatible with all Panomera® multifocal sensor systems
- Compatible with all Dallmeier network cameras
- Independent definition of virtual systems
- Definition of camera groups in one system
- Setting of IP addresses
- Implementation of updates

System Requirements¹⁾

- Operating system Microsoft Windows²⁾ 10 (64 Bit)
- CPU Intel³⁾ Core2Quad 2.66 GHz (or similar)
- Working memory 8 GB
- Ethernet 100/1000 Mbps
- Router / switch with broadcast support
- Nvidia⁴⁾ graphics board with CUDA 3.0 or 5.0 support (only required with Panomera® AutoCalibration)
- Screen resolution at least 1280x800 px, recommended 1920x1080 px
- Screen resolution for Panomera® AutoCalibration at least 1920x1080 px

1) These requirements relate to the use of the Panomera® AutoCalibration add-on. If this add-on is not used, workstations with the following or comparable equipment can be employed: Microsoft Windows 10, CPU Intel Core2Duo 2.0 GHz, RAM 2 GB.
2) Microsoft and Windows are trademarks or registered trademarks of Microsoft Corporation headquartered in Redmond, Washington, USA
3) Intel is a trademark or registered trademark of Intel Corporation headquartered in Santa Clara, California, USA
4) Nvidia is a trademark or registered trademark of Nvidia Corporation headquartered in Santa Clara, California, USA



See more.