

Configuring multiple identical Dallmeier cameras

SMAVIA Recording Server supports the automatic configuration of several identical Dallmeier cameras

The selection of the relevant cameras takes place after the Scan of the network in the IP Scan dialog.

- ▶ Click the button in the **LP-Track** column of the required camera / channel.

The **Select camera type** dialog is displayed.

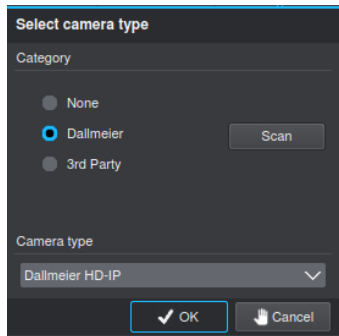


Fig. 1

- ▶ Select **Dallmeier** as the required camera type in the **Category** area.
- ▶ Click **Scan**.

The **IP Scan** dialog is displayed.

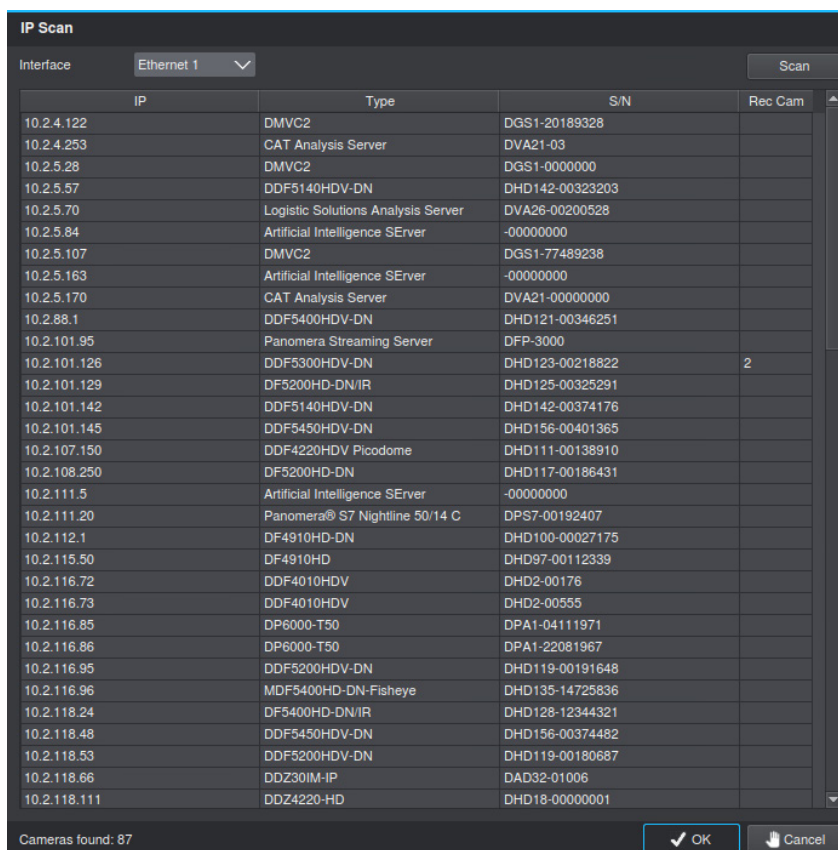


Fig. 2

- ▶ Select the relevant **Interface** from the dropdown box, if required.
- ▶ Select the relevant **Dallmeier** cameras.
- ▶ Confirm with **OK**.

VCA Events and Alarm Hosts

SMAVIA Recording Server supports the automatic configuration of several identical Dallmeier cameras

These cameras are then marked with an exclamation mark in the Recording Settings dialog.

11: Cam 11 (HD-IP)	!		
12: Cam 12 (HD-IP)	!		
13: Cam 13 (HD-IP)	!		
14: Cam 14 (HD-IP)	!		

Fig. 3

► Now configure the first camera.

During the configuration of the first camera, the adoption of the settings for the other models can be activated with the checkbox **Apply to all Dallmeier HD-IP of this model**.

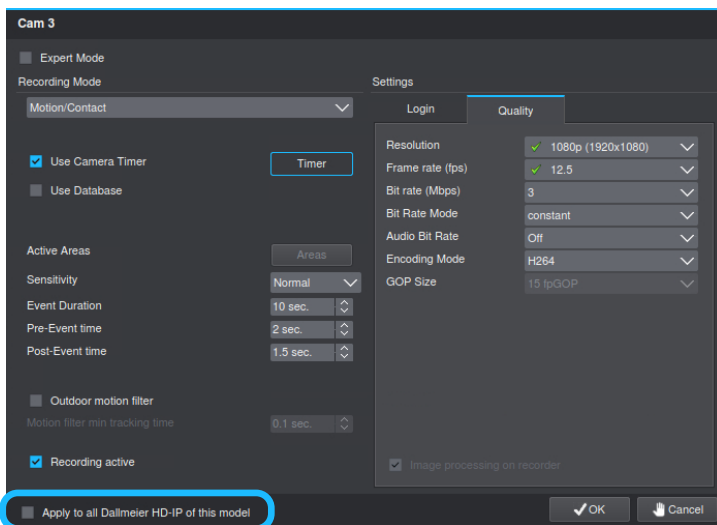


Fig. 4

► Click the checkbox, once the configuration is finished.

The settings are now applied to all selected Dallmeier cameras of the same model.