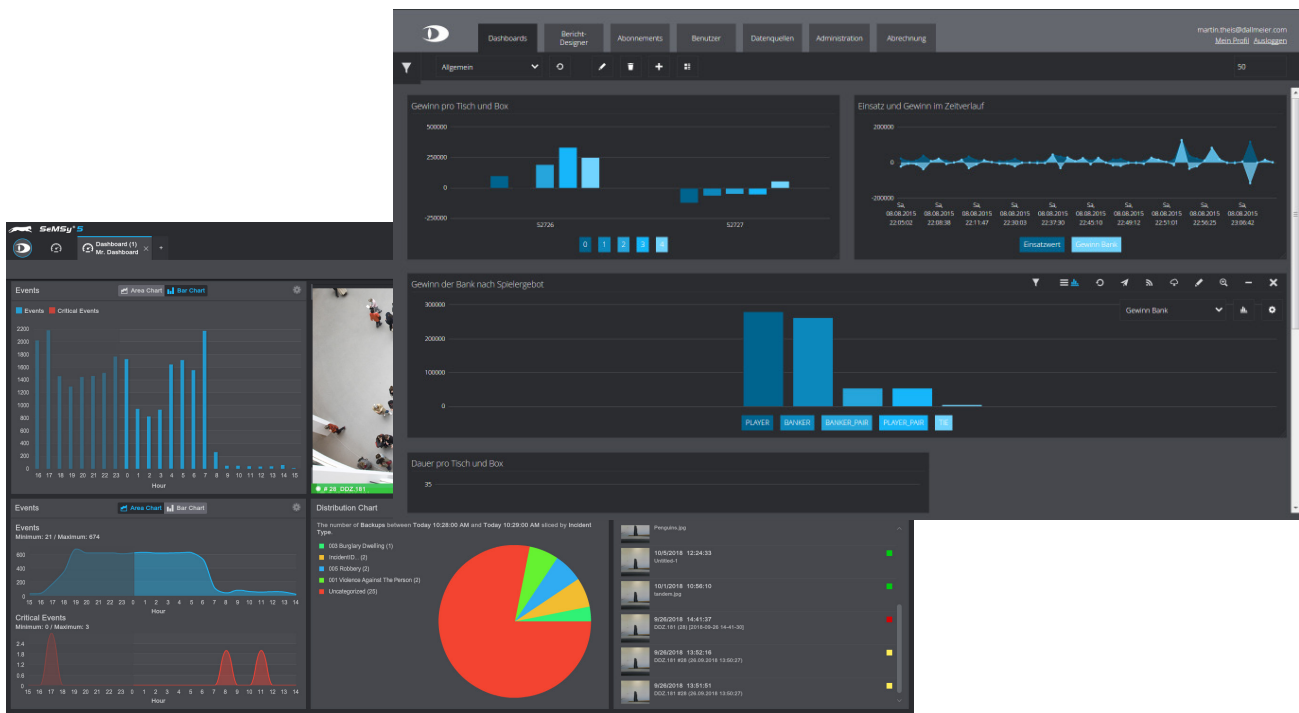


Business Intelligence Charting Module

HEMISPHERE® BIC Module for the creation and visualization of reports, statistics and analyses from various data sources



Function

The HEMISPHERE® Business Intelligence Charting Module (BIC) enables the creation and visualization of reports, statistics and analyses from various data sources such as POS systems or people counters. Business data can be presented in charts to identify correlations and apply them to support management decisions.

Data

The collection of business data forms the basis for comprehensive business analysis. The HEMISPHERE® Business Intelligence Charting Module therefore accesses the internal databases of the various HEMISPHERE® modules and other external sources in order to prepare this data for analysis.

Queries

The HEMISPHERE® Business Intelligence Charting Module supports the intuitive creation of queries even for complex data. No in-depth programming knowledge is required for this or for the execution of the queries.

Visualization

The HEMISPHERE® Business Intelligence Charting Module clearly visualizes the collected data in charts and diagrams. The relevant information is displayed by configurable widgets in a dashboard. The dashboard can also be directly integrated into other HEMISPHERE® modules, such as the HEMISPHERE® People Counting Module.

Report Designer

The integrated BIC Report Designer generates reports that can be automatically sent by e-mail or exported to .xlsx and .csv formats. A single report can contain data from multiple sources. Data can be filtered and grouped to create customized reports.

Configuration

The HEMISPHERE® Business Intelligence Charting Module provides a graphical user interface for configuration and operation, which can be accessed platform independently with a web browser.

Hardware

The HEMISPHERE® Business Intelligence Charting Module is installed and operated on a dedicated server. The optional Server Rack-Mount 2 RU III is recommended as hardware platform.


Licensing

The license for the HEMISPHERE® Business Intelligence Charting Module is managed on the HEMISPHERE® Site Dongle. For the access of the operators to configuration and operation a separate web client license is required for each operator (floating license).

Business Intelligence Charting Module

HEMISPHERE® BIC Module for the creation and visualization of reports, statistics and analyses from various data sources



Module License	
006164	DLD - HEMISPHERE® Business Intelligence Charting Module License for the use of the BIC module for creating reports, statistics and analyses, for one instance of the HEMISPHERE® Backbone Server
Client License	
006285	DLD - HEMISPHERE® Web Client Access BIC License for the access of one web client to a HEMISPHERE® Business Intelligence Charting Module (floating license)
Server	
006007.415	 Server Rack-Mount 2 RU III Server hardware, 2RU rack-mount, 2x 12-core 2.2GHz CPU, 128 GB DDR4-2400 RAM, 2x redundant power supplies, 1x SATA DOM 64 GB, 2x SSD 1000 GB with RAID 1 (in tray), 6x 3,5" HDDs optional, RAID 6, License for VMware ESXi 6.5 included



See more.