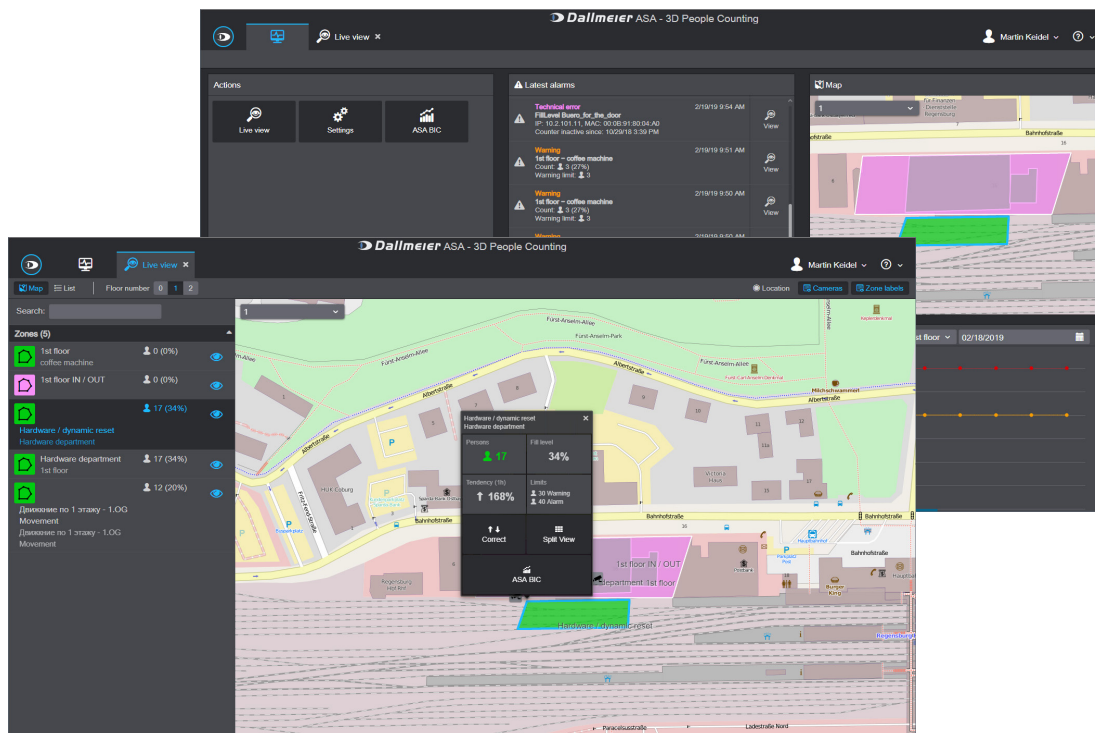


People Counting Module

HEMISPHERE® PCM Module for configuration, evaluation and analysis of the counting of persons in defined areas



Function

The HEMISPHERE® People Counting Module (PCM) enables the configuration, evaluation and analysis of people counting. Based on external counting devices, the system reliably detects the number of people present in a specific area as well as the number of people entering or leaving a defined area.

Messages

The HEMISPHERE® People Counting Module allows the definition of warning and alarm messages for areas where the number of people is limited. These messages can be distributed as events via the HEMISPHERE® Backbone Server to other modules or applications, for example to the Alarm Inbox of a HEMISPHERE® SeMSy® Workstation.

Evaluation

The comprehensive evaluation of configured counting zones can be carried out via the user interface of the module in the browser. In the Alarm Inbox of a HEMISPHERE® SeMSy® Workstation, each corresponding event contains the message status (warning / alarm), and a map view of the counting area.

Dashboard

The dashboard forms the start page of the module in the browser. Here the most current messages are listed. On a map section counting areas can be localized quickly.

Data Analysis

Count data can be analyzed using the HEMISPHERE® Business Intelligence Charting (BIC) module. Corresponding charts can be evaluated on the dashboard in real time.

Live View

The Live View shows a detailed list of the counting ranges on the selected level, with colored icons indicating the current status of the areas. In the map, counting areas can also be selected directly. A pop-up contains all relevant information for a counting range.

Live Stream

Cameras in counting zones can be marked with an icon on the map. One click activates the live stream of corresponding cameras in a window above the icon.

Configuration

The HEMISPHERE® People Counting Module provides a graphical user interface for configuration and operation, which can be accessed platform independently with a web browser.

Hardware

The HEMISPHERE® People Counting Module is installed and operated on a dedicated server. The optional Server Rack-Mount 2 RU III is recommended as hardware platform.


Licensing

The license for the HEMISPHERE® People Counting Module is managed on the HEMISPHERE® Site Dongle. For the access of the operators to configuration and operation a separate web client license is required for each operator (floating license). Note that a channel license is required for each external counting device.

People Counting Module

HEMISPHERE® PCM Module for configuration, evaluation and analysis of the counting of persons in defined areas



Module License	
006368	DLD - HEMISPHERE® People Counting Module License for the use of the PCM module for configuration and evaluation of people counts, for one instance of the HEMISPHERE® Backbone Server
Channel License	
007484	DLD - HEMISPHERE® Counter Channel PCM License for the use of the software interface for connection of one Ethernet People Counter to a HEMISPHERE® People Counting Module (floating license)
Client License	
006396	DLD - HEMISPHERE® Web Client Access PCM License for the access of one web client to a HEMISPHERE® People Counting Module (floating license)
Server	
006007.415	 Server Rack-Mount 2RU III Server hardware, 2RU rack-mount, 2x 12-core 2.2GHz CPU, 128 GB DDR4-2400 RAM, 2x redundant power supplies, 1x SATA DOM 64GB, 2x SSD 1000 GB with RAID 1 (in tray), 6x 3,5" HDDs optional, RAID 6, License for VMware ESXi 6.5 included

