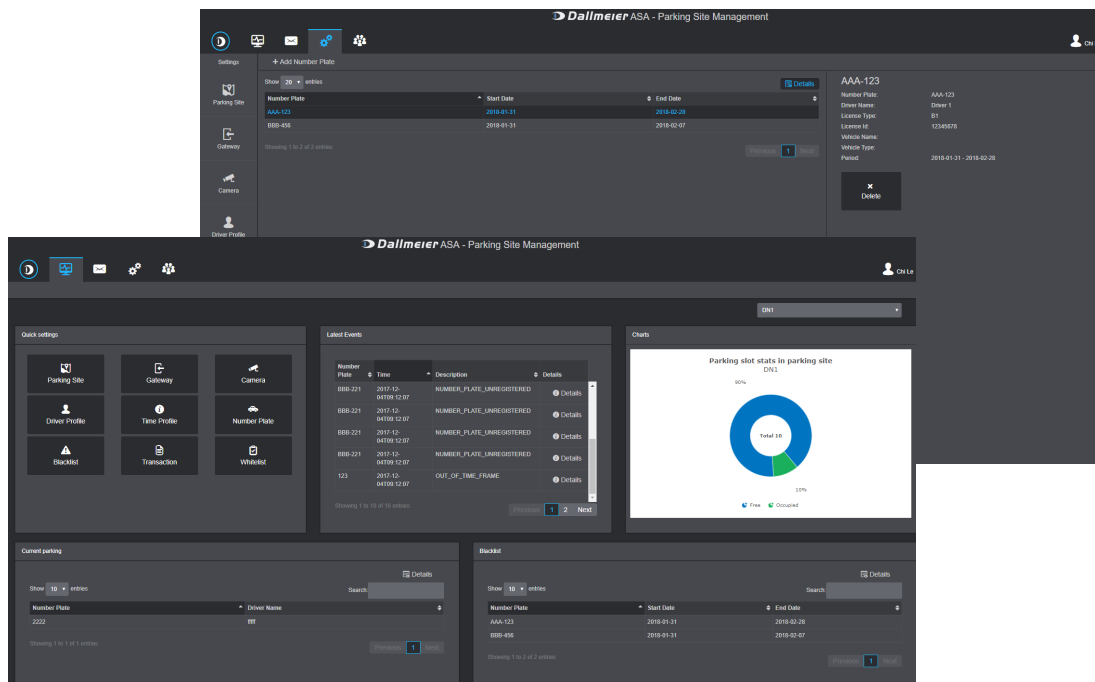


ANPR Module

HEMISPHERE® ANPR Module for automatic and comprehensive parking site management based on vehicle license plates and external ANPR readers



Function

The HEMISPHERE® ANPR Module (ANPR) enables comprehensive parking management with evaluation and analysis of vehicle movements by means of their license plates. Based on external ANPR readers, the system reliably records all moving or stationary license plates and stores them in a database together with the corresponding video footage for further processing.

Parking Site Management

The HEMISPHERE® ANPR Module allows the configuration of a system for comprehensive parking management with different entrances and exits. Freely definable lists (employee, supplier, guest, VIP) allow a sophisticated entry and exit authorization, which can be refined calendar-based with defined times of day.

Control

The HEMISPHERE® ANPR module can control third-party systems via the various interfaces of the HEMISPHERE® system. This makes it possible, for example, to open or close a barrier or gate on the basis of the recognized license plate number (whitelist / blacklist).

Messages

The HEMISPHERE® ANPR Module allows the definition of warning and alarm messages for areas where the number of vehicles is limited. These messages can be distributed as events via the HEMISPHERE® backbone server to other modules or applications, for example to the alarm inbox of a HEMISPHERE® SeMSy® Workstation.

Evaluation

The comprehensive evaluation of the parking situation can be carried out via the user interface of the module in the browser, whereby all events can be displayed with images of the license plate and overview cameras.

Dashboard

The dashboard forms the start page of the module in the browser. Here the latest events are listed. In addition, the filling level of the parking space can be displayed graphically, also in combination with a list of currently permitted or prohibited license plates (blacklist).

Data Analysis

The data of the license plate system can be analyzed using the HEMISPHERE® Business Intelligence Charting (BIC) module, which is subject to charge. Corresponding charts can be evaluated on the dashboard in real time.

Configuration

The HEMISPHERE® ANPR Module provides a graphical user interface for configuration and operation, which can be accessed platform independently with a web browser.

Hardware

The HEMISPHERE® ANPR Module is installed and operated on a dedicated server. The optional Server Rack-Mount 2 RU III is recommended as hardware platform.


Licensing

The license for the HEMISPHERE® ANPR Module is managed on the HEMISPHERE® Site Dongle. For the access of the operators to configuration and operation a separate web client license is required for each operator (floating license). Note that a channel license is required for each external ANPR reader.

ANPR Module

HEMISPHERE® ANPR Module for automatic and comprehensive parking site management based on vehicle license plates and external ANPR readers



Module License	
007352	DLD - HEMISPHERE® ANPR Module License for the use of the ANPR module for automatic evaluation of license plates, for one instance of the HEMISPHERE® Backbone Server
Channel License	
007485	DLD - HEMISPHERE® Reader Channel ANPR License for the use of the software interface for the connection of one Ethernet ANPR reader to a HEMISPHERE® ANPR Module (floating license)
Client License	
007353	DLD - HEMISPHERE® Web Client Access ANPR License for the access of one web client to a HEMISPHERE® ANPR Module (floating license)
Server	
006007.415	 Server Rack-Mount 2RU III Server hardware, 2RU rack-mount, 2x 12-core 2.2GHz CPU, 128 GB DDR4-2400 RAM, 2x redundant power supplies, 1x SATA DOM 64GB, 2x SSD 1000 GB with RAID 1 (in tray), 6x 3,5" HDDs optional, RAID 6, License for VMware ESXi 6.5 included



See more.