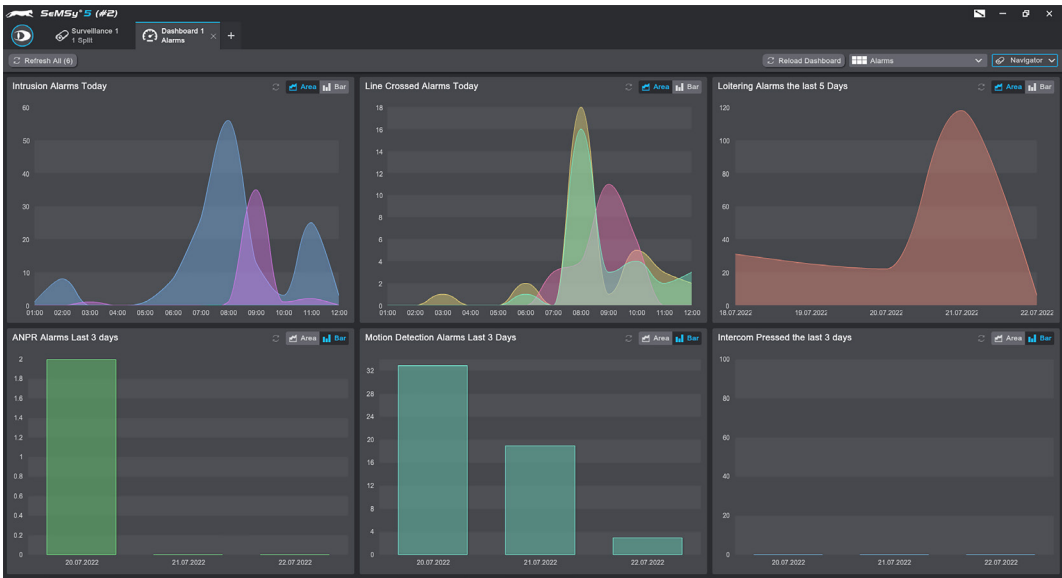


SeMSy® Dashboard Process

HEMISPHERE® SeMSy® Dashboard Process for the creation and visualization of reports, statistics and analyses on a HEMISPHERE® SeMSy® Workstation



The HEMISPHERE® SeMSy® Video Management System combines the proven concept of its predecessors with new **dynamics and flexibility**. The optimized license model with administration on the central HEMISPHERE® Backbone Server allows a **simple, fast and secure adaptation and expansion** of the entire system during operation.



Function

With the SeMSy® Dashboard Process, operators keep an eye on all important data sources and events at all times. Any system information and application data can be clearly displayed in widgets as line, column or pie charts. The process also offers additional options for app shortcuts and camera connections.

Presentation

The individual widget size depends on the selection of the widget layout (2 x 2, 3 x 2, etc.) and the resulting number of widgets to be displayed on a dashboard. A dashboard configuration is thus created specifically for the data and information to be displayed.

Data Visualization

The visualization of data takes place in diagram charts (line, column, pie charts). This can be defined individually for each data source.

Camera Splits

Camera splits have the full range of functions for live and playback operation like a split in a "Surveillance" tab.

Data Refresh

Widget data is updated automatically at adjustable intervals. In addition, a manual refresh can always be used.

Multiple Dashboard Processes

The process structure enables multiple dashboards to be viewed and used simultaneously on a single workstation.

Editor

An editor allows individual creation and configuration of dashboards..

License		B	A	P	E
006754	DLD - HEMISPHERE® SeMSy® Dashboard Process and Editor License for the use of the Dashboard Process with Editor on one workstation (1x license for HEMISPHERE® Site Dongle)	<input type="checkbox"/>	<input checked="" type="checkbox"/>	<input checked="" type="checkbox"/>	<input checked="" type="checkbox"/>

- ☐ Not included in the Basic, Advanced, Professional or Enterprise function package of the HEMISPHERE® SeMSy® Workstation Software
- ☒ Included in the Basic, Advanced, Professional or Enterprise function package of the HEMISPHERE® SeMSy® Workstation Software

