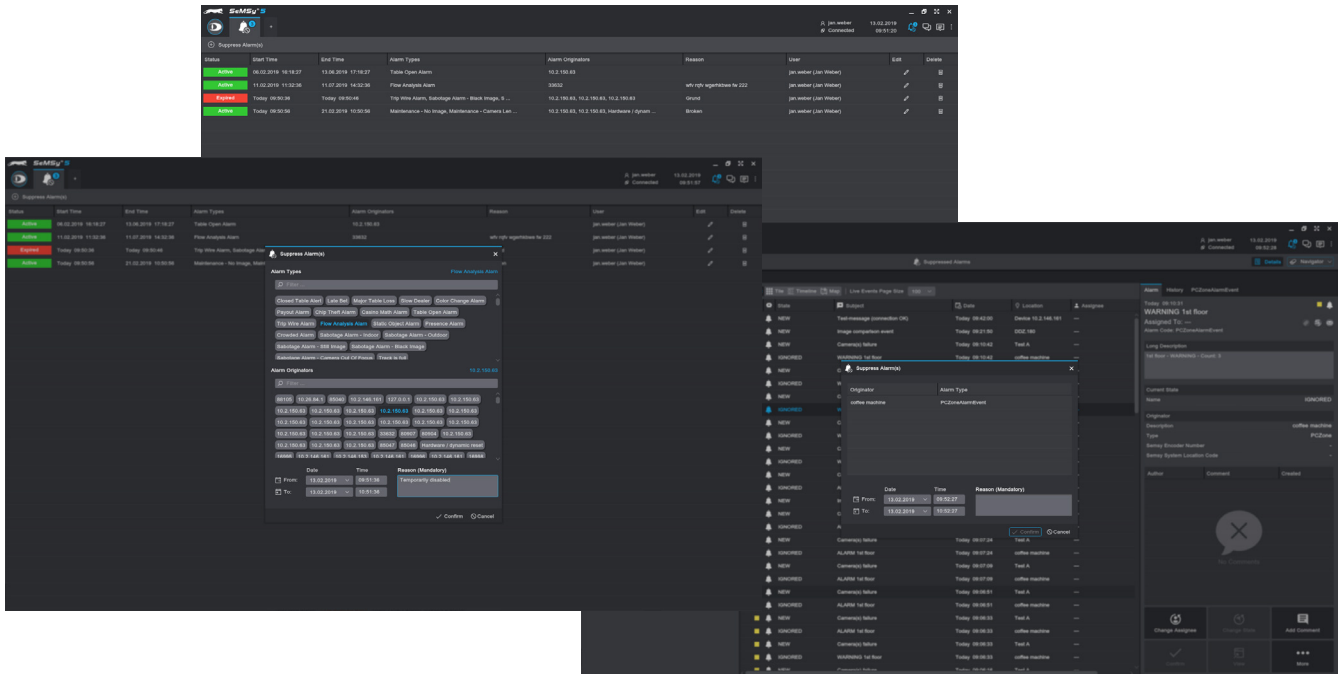


SeMSy® Suppressed Alarms Application

HEMISPHERE® SeMSy® Suppressed Alarms application for temporary suppression of alarms on a HEMISPHERE® SeMSy® Workstation



The HEMISPHERE® SeMSy® Video Management System combines the proven concept of its predecessors with new dynamics and flexibility. The optimized license model with administration on the central HEMISPHERE® Backbone Server allows a simple, fast and secure adaptation and expansion of the entire system during operation.



Function

The SeMSy® Suppressed Alarms Application makes it possible to temporarily suppress alarms. For this purpose, originator devices can be completely deactivated or only individual alarm types can be temporarily switched off.

Overview

The SeMSy® Suppressed Alarms Application lists all active (green) and expired (red) alarm suppression settings in an overview.

Icon

An icon in the upper right corner of the program window shows the number of running alarm suppressions with color (blue) and in a badge. The app can be opened via the icon.

Intuitive Settings Dialog

The settings dialog for configuring alarm suppressions clearly shows active alarm types and originator devices. Operators can quickly set the desired options with just a few clicks.

Optional Reason

In order to make the suppression of an alarm traceable, it can be defined in the app settings whether an operator must enter a reason when setting up an alarm suppression.

Simple Data Takeover

Data (type, originator device) of received alarm events can be used directly for a suppression of this alarm event without having to make further settings.

Licensing

The license for the HEMISPHERE® SeMSy® Suppress Alarm Application is included in the scope of delivery of the HEMISPHERE® SeMSy® Alarm Inbox Application.

