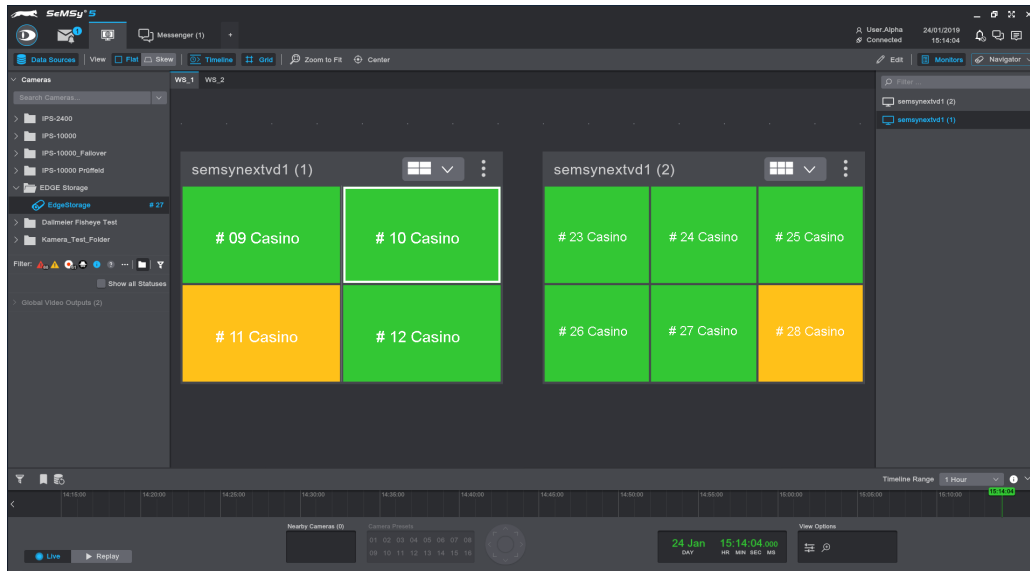


SeMSy® Monitorwall Application

HEMISPHERE® SeMSy® Monitorwall Application for configuration, control and operation of external monitors on a HEMISPHERE® SeMSy® Workstation



The HEMISPHERE® SeMSy® Video Management System combines the proven concept of its predecessors with new dynamics and flexibility. The optimized license model with administration on the central HEMISPHERE® Backbone Server allows a simple, fast and secure adaptation and expansion of the entire system during operation.



Function

The SeMSy® Monitorwall Application enables the configuration, control and operation of external monitors in a SeMSy® Video Management. The Variodecoder software provides the monitor connection in the backend. These are integrated into a SeMSy® system as global video outputs.

Monitor Walls

Individual external monitors are combined in the application to form monitor walls and can thus be assigned to specific locations in a system, for example.

Split Layouts

Various split layouts (2 x 2, 3 x 2, 3 x 3, etc.) are available for use on external monitors.

Live and Replay

In the splits, cameras are connected by dragging and dropping from the "Navigator" or via number entry. All functions are available in the app for live and playback operation.

Share Contents

Monitor contents such as individual splits or complete split layouts can be shared with a "Surveillance" tab. Similarly, contents of a "Surveillance" tab can be transferred to an external monitor.

Split Set Targets

A configured external monitor can be exported as a template for "Split Sets". In the same way, a complete monitor wall can be exported as a "Split Set". The individual monitors are defined as individual targets of the "Split Set".

License	B	A	P	E
006753 DLD - HEMISPHERE® SeMSy® Monitorwall Application License for the use of the Monitorwall Application on one workstation (1x license for HEMISPHERE® Site Dongle)	<input type="checkbox"/>	<input checked="" type="checkbox"/>	<input checked="" type="checkbox"/>	<input checked="" type="checkbox"/>

- Not included in the Basic, Advanced, Professional or Enterprise function package of the HEMISPHERE® SeMSy® Workstation Software
- Included in the Basic, Advanced, Professional or Enterprise function package of the HEMISPHERE® SeMSy® Workstation Software

Dallmeier electronic GmbH & Co.KG | Bahnhofstr. 16, 93047 Regensburg, Germany | +49 941 8700-0 | dallmeier.com

All trademarks identified by * are registered trademarks of Dallmeier electronic GmbH & Co.KG.

Third-party trademarks are named for information purposes only. Dallmeier electronic respects the intellectual property of third parties and always attempts to ensure the complete identification of third-party trademarks and indication of the respective holder of rights. In case that protected rights are not indicated separately, this circumstance is no reason to assume that the respective trademark is unprotected.

Specifications subject to change without notice. Errors and misprints excepted. Pictures may differ from the actual product.

