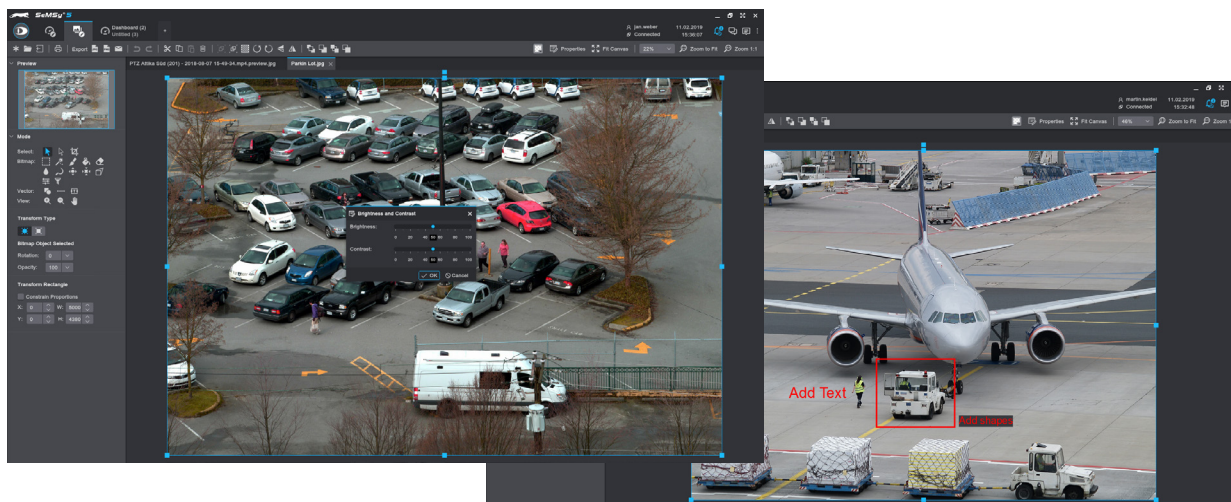


SeMSy® Image Editor

HEMISPHERE® SeMSy® Image Editor for the editing of snapshots on a HEMISPHERE® SeMSy® Workstation



The HEMISPHERE® SeMSy® Video Management System combines the proven concept of its predecessors with new **dynamics and flexibility**. The optimized license model with administration on the central HEMISPHERE® Backbone Server allows a **simple, fast and secure adaptation and expansion** of the entire system during operation.



Function

The SeMSy® Image Editor allows for the editing of snapshots on a SeMSy® Workstation. The image editor provides numerous functions for image processing and optimization.

Snapshots

Snapshots taken in SeMSy® can be opened in the image editor via the gallery app Image Viewer. In addition, further file options are available via the file manager.

Editing

Snapshots and images can be cropped, only parts can be cut out or areas can be selected with the magic wand. Brightness/contrast, hue/saturation and color balance are edited in corresponding filter dialogs.

Automatic Image Correction

An automatic image correction automatically optimizes these values (brightness, contrast, hue).

Texts and Forms

Image contents can be marked with free forms and additionally marked with texts fields.

Color Filters

Numerous color filters (invert, sepia, grayscale, etc.) can be applied to various effects with a single click.

Export

Image files can be saved in the Image Viewer gallery app or exported to external media using the file manager.

License		B	A	P	E
006755	DLD - HEMISPHERE® SeMSy® Image Editor License for the use of the Image Editor on one workstation (1x license for HEMISPHERE® Site Dongle)	<input type="checkbox"/>	<input checked="" type="checkbox"/>	<input checked="" type="checkbox"/>	<input checked="" type="checkbox"/>

- Not included in the Basic, Advanced, Professional or Enterprise function package of the HEMISPHERE® SeMSy® Workstation Software
- Included in the Basic, Advanced, Professional or Enterprise function package of the HEMISPHERE® SeMSy® Workstation Software

Dallmeier electronic GmbH & Co.KG | Bahnhofstr. 16, 93047 Regensburg, Germany | +49 941 8700-0 | dallmeier.com

All trademarks identified by * are registered trademarks of Dallmeier electronic GmbH & Co.KG.

Third-party trademarks are named for information purposes only. Dallmeier electronic respects the intellectual property of third parties and always attempts to ensure the complete identification of third-party trademarks and indication of the respective holder of rights. In case that protected rights are not indicated separately, this circumstance is no reason to assume that the respective trademark is unprotected.

Specifications subject to change without notice. Errors and misprints excepted. Pictures may differ from the actual product.

