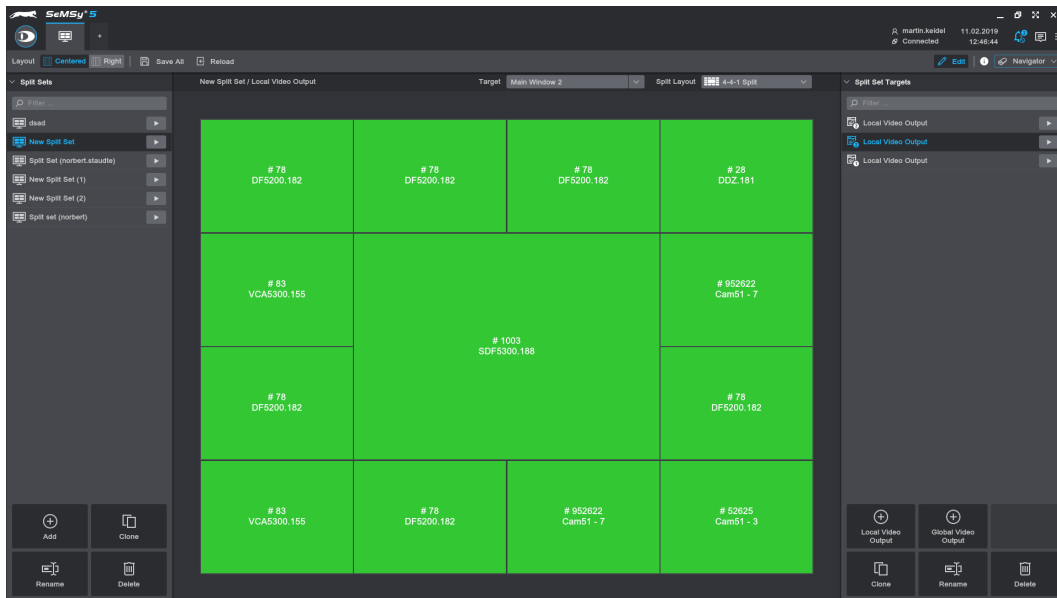


SeMSy® Split Set Editor

HEMISPHERE® SeMSy® Split Set Editor for the creation and editing of split sets on a HEMISPHERE® SeMSy® Workstation



The HEMISPHERE® SeMSy® Video Management System combines the proven concept of its predecessors with new **dynamics and flexibility**. The optimized license model with administration on the central HEMISPHERE® Backbone Server allows a **simple, fast and secure adaptation and expansion** of the entire system during operation.



Function

The SeMSy® Split Set Editor application is used to configure and manage split sets in a SeMSy® video management system. A split set is a configured split layout with connected content (cameras).

Configuration

The app offers comprehensive functions for creating new split sets. Different split layouts (2 × 2, 2 × 3, 4-4-1 etc.) can be selected and connected to cameras. Entries can easily be duplicated (cloned) and used as a basis for other split sets.

Targets

Local (workstation monitors 1 to 4) and global (variodecoder monitors) targets can be selected for the output of split sets. For a split set several different targets with individually configured split layouts can be defined.

Operation

Split Sets are listed on a tab in the Navigator and can be activated from there using Drag&Drop or double-click. It is also possible to link only individual targets of a split set.

License		B	A	P	E
006752	DLD - HEMISPHERE® SeMSy® Split Set Editor License for the use of the Split Set Editor on one workstation (1x license for HEMISPHERE® Site Dongle)	<input type="checkbox"/>	<input checked="" type="checkbox"/>	<input checked="" type="checkbox"/>	<input checked="" type="checkbox"/>

- Not included in the Basic, Advanced, Professional or Enterprise function package of the HEMISPHERE® SeMSy® Workstation Software
- Included in the Basic, Advanced, Professional or Enterprise function package of the HEMISPHERE® SeMSy® Workstation Software

Dallmeier electronic GmbH & Co.KG | Bahnhofstr. 16, 93047 Regensburg, Germany | +49 941 8700-0 | dallmeier.com

All trademarks identified by * are registered trademarks of Dallmeier electronic GmbH & Co.KG.

Third-party trademarks are named for information purposes only. Dallmeier electronic respects the intellectual property of third parties and always attempts to ensure the complete identification of third-party trademarks and indication of the respective holder of rights. In case that protected rights are not indicated separately, this circumstance is no reason to assume that the respective trademark is unprotected.

Specifications subject to change without notice. Errors and misprints excepted. Pictures may differ from the actual product.

