

*Video Management System*

# **SeMSy<sup>®</sup> III** **Variodecoder**



## Information about Copyright, Trademarks, Design Patents

© 2012 Dallmeier electronic

The reproduction, distribution and utilization of this document as well as the communication of its contents to others without express authorization is prohibited. Offenders will be held liable for the payment of damages. All rights reserved in the event of the grant of a patent, utility model or design.

We reserve the right to make technical modifications.

The manufacturer accepts no liability for damage to property or pecuniary damages arising due to minor defects of the product or documentation, e.g. print or spelling errors, and for those not caused by intention or gross negligence of the manufacturer.

Dallmeier electronic GmbH & Co.KG  
Cranachweg 1  
93051 Regensburg, Germany

[www.dallmeier.com](http://www.dallmeier.com)  
[info@dallmeier.com](mailto:info@dallmeier.com)

All trademarks identified by ® are registered trademarks of Dallmeier electronic.

All trademarks identified by \*) are trademarks or registered trademarks of the following owners:  
Intel and Core2Duo of Intel Corporation headquartered in Santa Clara, California, USA  
Microsoft, Windows and Windows Vista of Microsoft Corporation headquartered in Redmond, Washington, USA

Third-party trademarks are named for information purposes only.  
Dallmeier electronic respects the intellectual property of third parties and always attempts to ensure the complete identification of third-party trademarks and indication of the respective holder of rights. In case that protected rights are not indicated separately, this circumstance is no reason to assume that the respective trademark is unprotected.

## Table of Contents

<b>1</b>	<b>Introduction</b> .....	<b>4</b>
1.1	Validity.....	4
1.2	Documents.....	4
1.3	Conventions.....	4
<b>2</b>	<b>System Requirements</b> .....	<b>5</b>
<b>3</b>	<b>Installation</b> .....	<b>6</b>
<b>4</b>	<b>First Start</b> .....	<b>12</b>

# 1 Introduction

## 1.1 Validity

This document applies to the **SeMSy® III Variodecoder** software. The descriptions in this document are based on the following software versions:

- Microsoft® Windows® 7
- SeMSy® III V 1.4.12

Pictures in this document may differ from the actual product.

## 1.2 Documents

### Installation (this document)

The document **Installation** contains detailed descriptions of the installation and commissioning of the software.

The target audience of this document is trained and authorized professionals (installers).

### Configuration

The document **Configuration** contains detailed descriptions of the configuration of the software. Safety notes, general information and technical data are additionally provided.

The target audience of this document is trained and authorized professionals (installers).

## 1.3 Conventions

This document contains various warning words and symbols that indicate potential sources of danger.

### NOTICE

NOTICE indicates practices for preventing property damage, incorrect configurations or faulty operations.

The following symbols and various character formats are used to increase the clearness of the document:

- This arrow indicates an instruction.

Expressions in **bold/italics** generally indicate a control element on the user interface (buttons, menu entries).

*Paragraphs in italics provide information on basic principles, special features and efficient procedure as well as general recommendations.*

## 2 System Requirements

In order to install the **SeMSy® III Variodecoder** server the following requirements must be met:

<b>Operating system</b>	Microsoft Windows XP SP 3/ Windows 7, each 32-bit versions
<b>Processor (CPU)</b>	Intel*) Core*)2Quad 2.66 GHz
<b>Random access memory (RAM)</b>	DDR3-RAM 4 GB
<b>Graphics card</b>	VGA compatible
<b>Resolution</b>	1600x 1200 or 1920x 1080
<b>Ethernet</b>	100 Mbps
<b>Space</b>	200 MB
<b>Miscellaneous</b>	SeMSy® III Setup Server

## 3 Installation

The SeMSy® III Installer setup will install all required components on the system.

Before starting note

- that administrator rights are required.
- that a SeMSy® III Setup Server must be available and accessible over the network.

Proceed as follows to install a SeMSy® III Variodecoder server with all required components.

- Close all applications.
- Start the **SeMSy3\_Installer X.X.X.exe** file.

The **Select Language** dialogue is displayed.

- Select the language for the installation dialogues.
- Confirm with **OK**.

The welcome dialogue is displayed.

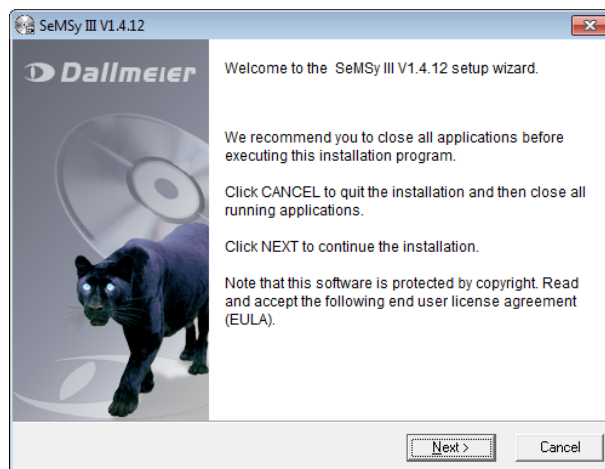


Fig. 3-1

- Click **Next**.
- Confirm the end user licence agreement dialogue with **Agree**.
- Confirm after reading the **ReadMe** text the dialogue with **Next**.

The **Select installation software package** dialogue is displayed.

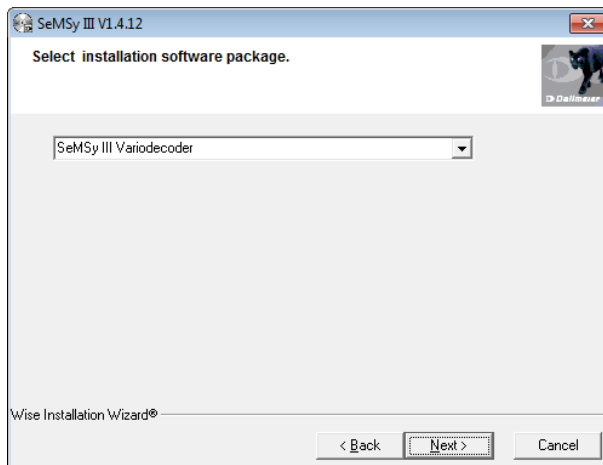


Fig. 3-2

- Select the **SeMSy III Variodecoder** installation type.
- Confirm with **Next**.

The **Select installation directory** dialogue is displayed.

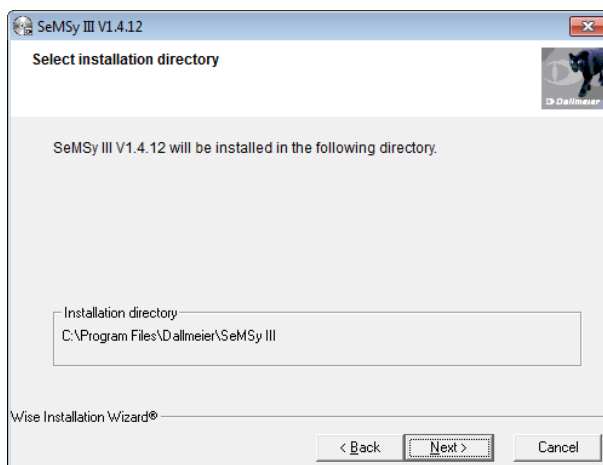


Fig. 3-3

*The installation directory must not be changed.*

- Confirm with **Next**.

The **Start installation** dialogue is displayed.

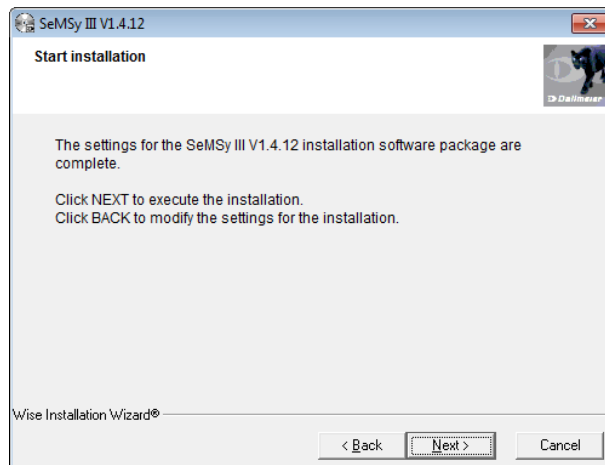


Fig. 3-4

- Confirm with **Next**.

The **Installing** dialogue is displayed.

- Confirm with **Next**.
- Finally confirm with **Finish**.

The installation of the Network Time Protocol Server starts automatically.

- Confirm the subsequent dialogue of the license terms with **I Agree**.

The dialogue to choose the installation directory is displayed.

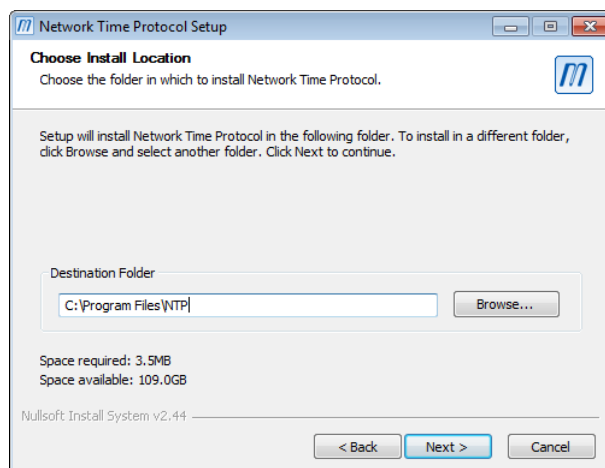


Fig. 3-5

- Change the installation directory if required.
- Confirm with **Next**.



The **Choose Components** dialogue is displayed.

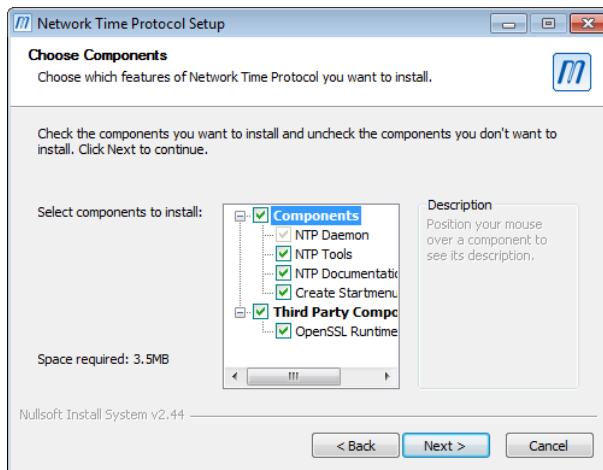


Fig. 3-6

- Change the components to install if required.
- Confirm with **Next**.
- Confirm the subsequent info dialogue with **Yes**.

The **Configuration Options** dialogue is displayed.

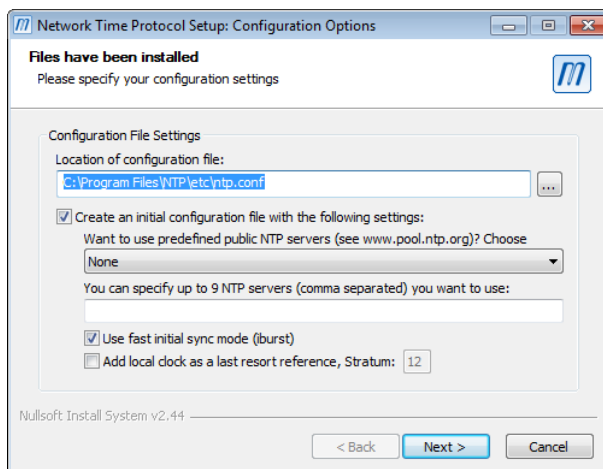


Fig. 3-7

- Confirm with **Next**.
- Confirm the two subsequent info dialogues with **Yes**.

The configuration file is displayed in a text editor.

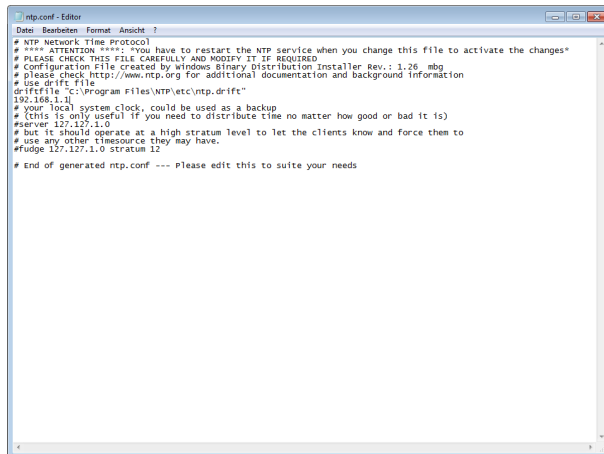


Fig. 3-8

- Edit the **#server 127.127.1.0** line.
- Enter the PC host name or the IP address of the SeMSy® III Setup Server and remove the comment character **#**.
- Save the configuration file.

The **NTP Service Options** dialogue is displayed.

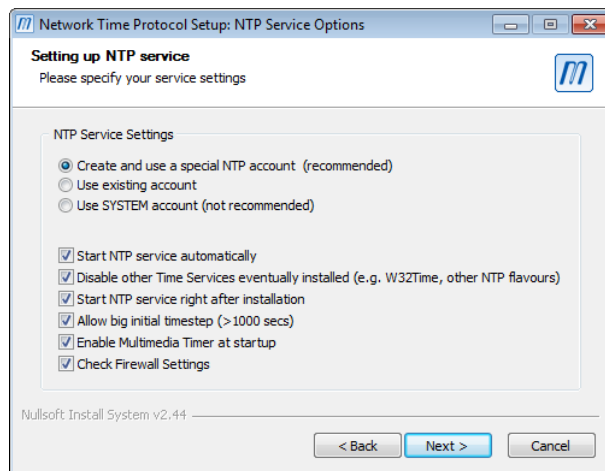


Fig. 3-9

- Change the service options if required.
- Confirm with **Next**.

The **NTP Service Account** dialogue is displayed.

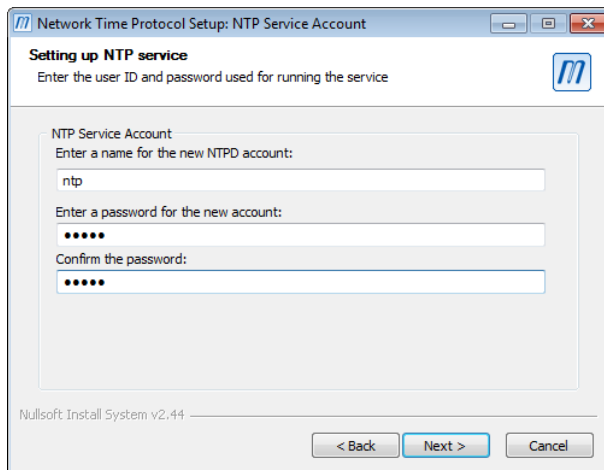


Fig. 3-10

- Enter **ntp** as the account name.
- Enter **admin** as the password.
- Enter **admin** as the password confirmation.
- Confirm with **Next**.
- Confirm the subsequent closing dialogue with **Finish**.
- Finally confirm the restart of the system with **OK**.

The installation of the SeMSy® III Variodecoder server is complete.

## 4 First Start

After the reboot of the system the dongle of the device must be activated first.

The **SysStart** application will automatically opened and minimized in the system tray.

The **Unlock Hardlock Dongle** dialogue is displayed.

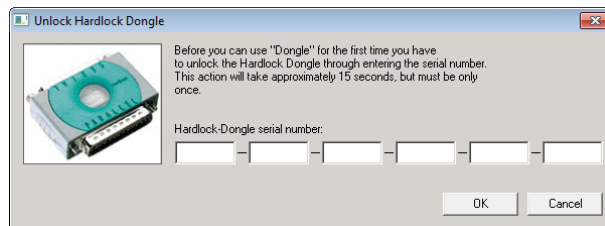


Fig. 4-1

➤ Enter the required serial number.

The Vario Decoder automatically starts in a single split.