

Scheduled Switches: Configuration

PTZ Cameras: Control of Presets and Tours with Schedules



SeMSy® III is a high-performance and future-proof video management system with optimum user friendliness. It offers a comprehensive range of functions, including the display of live images, various search options within the footage, the control of PTZ cameras and easy archiving of relevant sequences.

PTZ functions (presets, tours, patterns, scans) of corresponding Dallmeier cameras can be precisely controlled via time schedules in SeMSy® III.

This handout shows how schedules are created and how they are mapped to a PTZ camera in the further course.

Creating of Schedules

In a first step, the necessary schedules for the respective requirements has to be created. These are then assigned to the individual PTZ cameras.

- ⇒ Open the SeMSyConfig tool and log in with the required credentials, as described in the “Configuration” documentation for “SeMSy® III SeMSyConfig”.
- ⇒ Right-click the **Encoders** main directory to display the context menu:

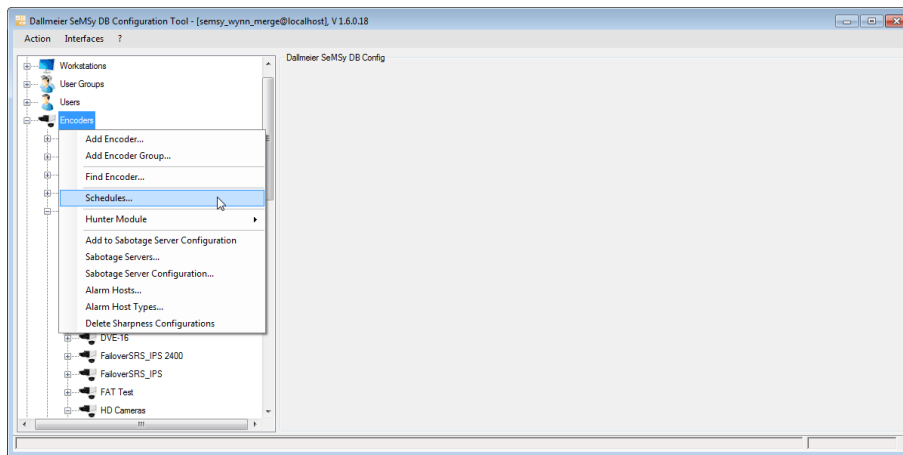


Fig. 1

- ⇒ Select **Schedules...** to open the **Encoder Schedules** configuration dialog:

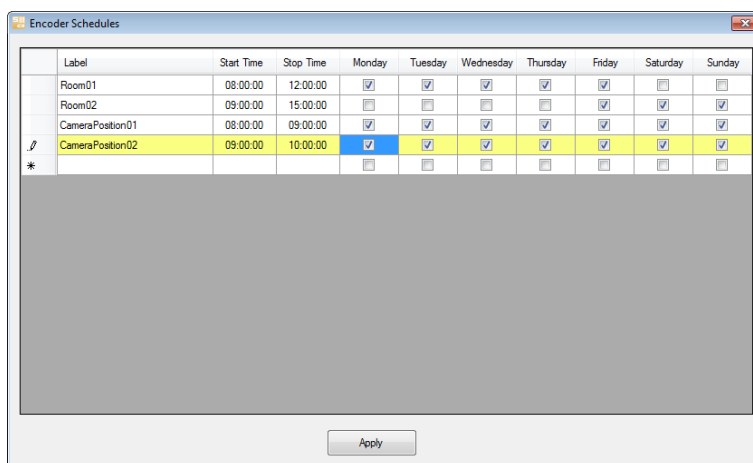


Fig. 2

- ⇒ Create schedules as described below:
- ⇒ Enter in the **Label** field a name for the schedule.

Scheduled Switches: Configuration

PTZ Cameras: Control of Presets and Tours with Schedules



- ⇒ Set the required **Start Time** and **Stop Time** for the schedule.
- ⇒ Select the days of the week at which the schedule is to be valid.
- ⇒ Proceed as described to create more schedules.
- ⇒ Finally, click **Apply** to save and use the entries.

Deleting a Schedule

Proceed as follows to delete a schedule.

- ⇒ Click in the first column (▶) of the required schedule to select it completely.
- ⇒ Press the **Del** key.

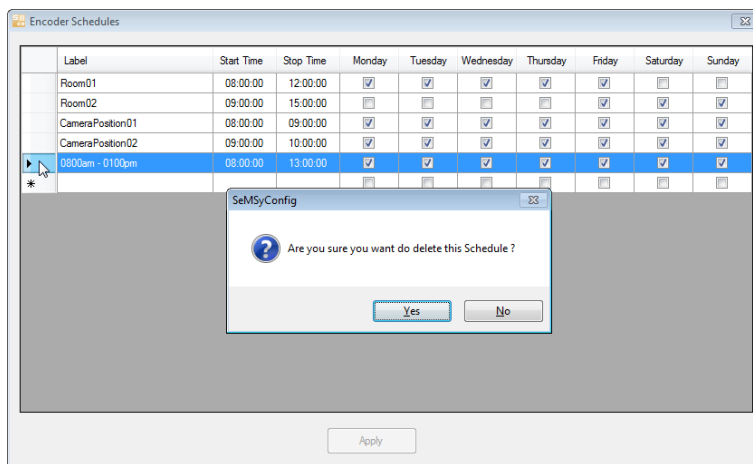


Fig. 3

- ⇒ Confirm the subsequent info dialog.

The schedule is removed from the list.

Scheduled Switches: Configuration

PTZ Cameras: Control of Presets and Tours with Schedules



Assigning Schedules to PTZ cameras

Follow the steps below to assign the required schedules to a PTZ camera.

- ⇒ Select in the **Encoders** directory the required PTZ camera.
- ⇒ Select the **Scheduled Switches** tab.

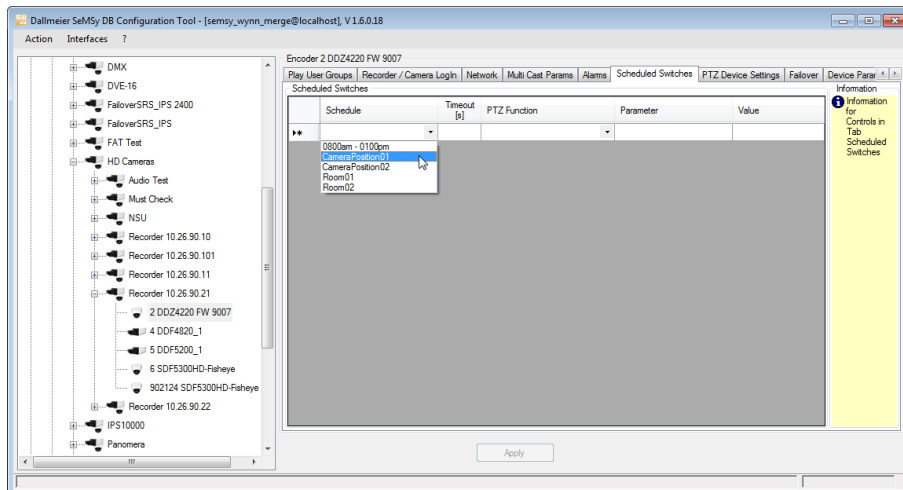


Fig. 4

- ⇒ Select the required schedule from the **Schedule** drop-down menu.
- ⇒ Set a **Timeout** (in seconds) for the start of the PTZ function (if the PTZ camera is not reachable, for example, the operation will be aborted after the set time).

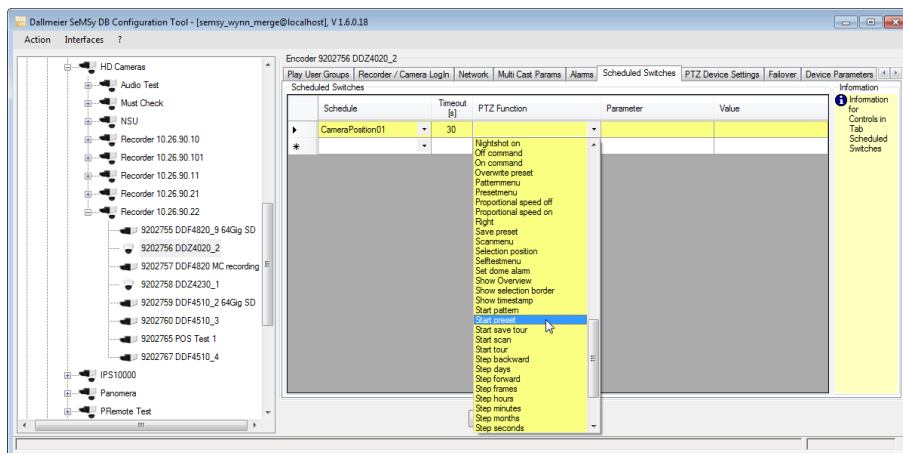


Fig. 5

- ⇒ Select one of the following functions from the **PTZ Function** drop-down menu:
Start pattern/ Start preset/ Start scan/ Start tour

Scheduled Switches: Configuration

PTZ Cameras: Control of Presets and Tours with Schedules

SEMSy[®] III

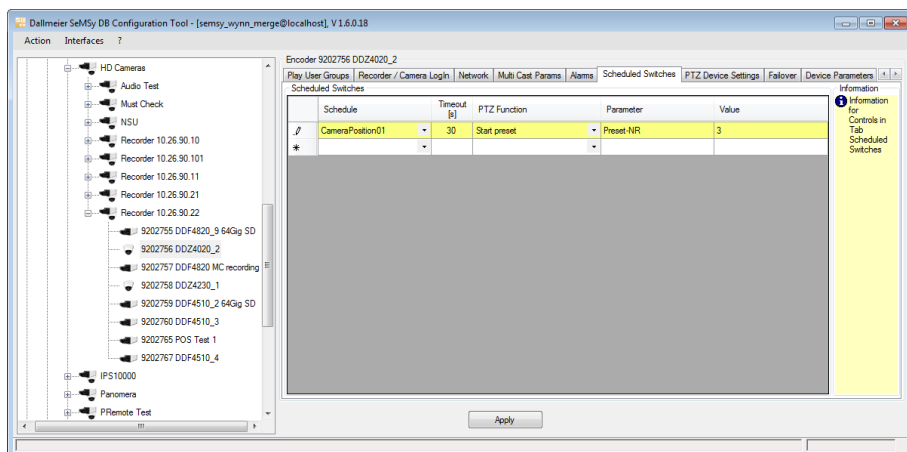


Fig. 6

⇒ Enter the required function value (preset/tour number, etc.) in the **Value** field.

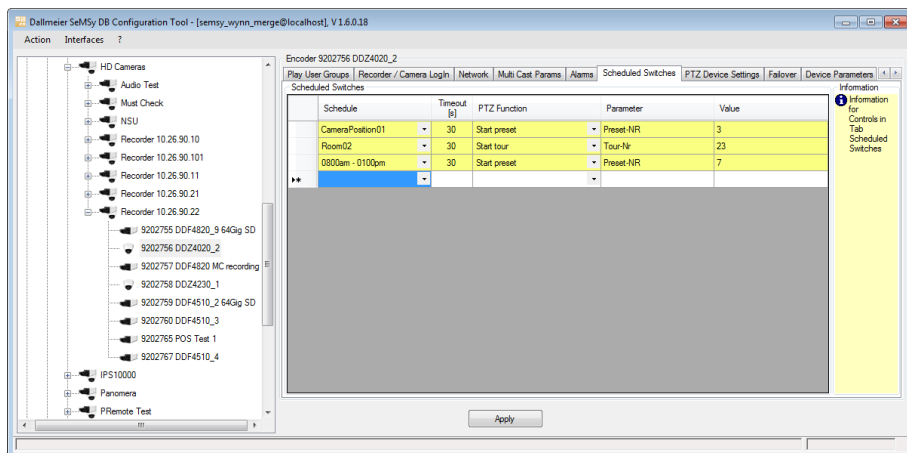


Fig. 7

- ⇒ Add additional schedules to the PTZ camera and configure them as above described, if required.
- ⇒ Finally, click **Apply** to save and use the settings.

Scheduled Switches: Configuration

PTZ Cameras: Control of Presets and Tours with Schedules



Overlapping of Schedules

If the selected schedules overlap, the affected schedules are highlighted in color and an info dialog is displayed.

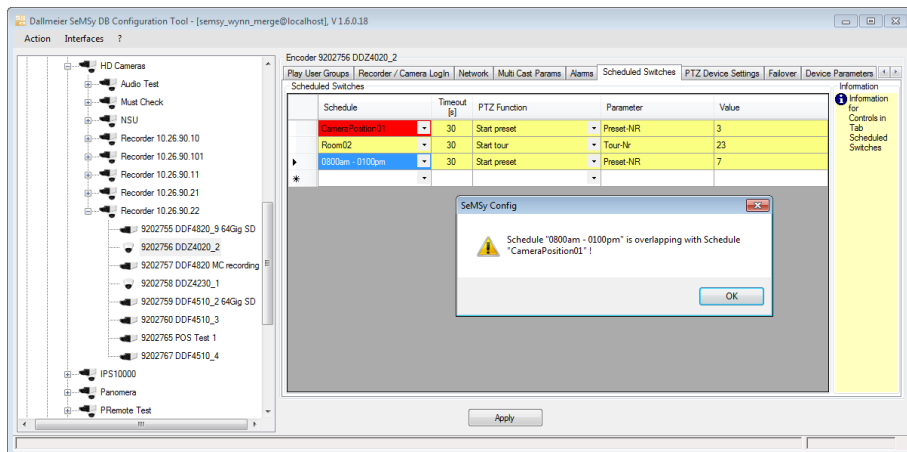


Fig. 8

⇒ Confirm the info dialog and correct the settings in the schedule selection or in the schedules themselves.

Deleting a Schedule

Proceed as follows to remove a schedule.

- ⇒ Select the required PTZ camera.
- ⇒ Select the **Scheduled Switches** tab.

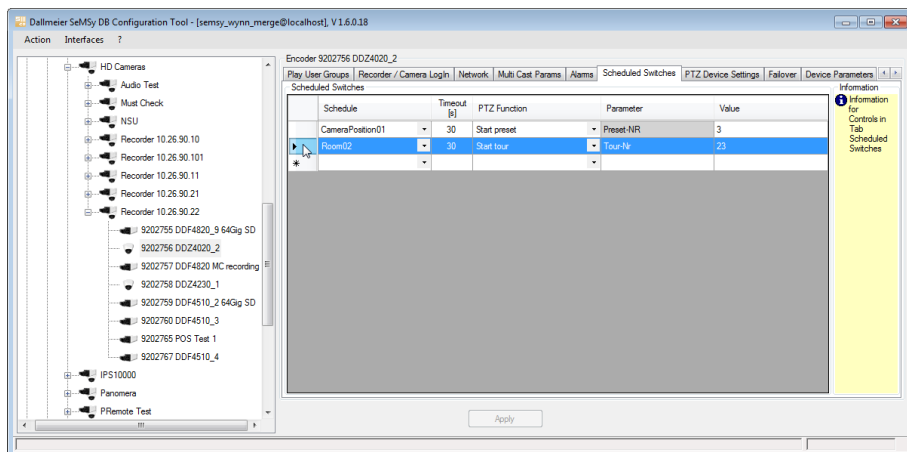


Fig. 9

- ⇒ Click in the first column (▶) of the required schedule to select it completely.
- ⇒ Press the **Del** key.

Scheduled Switches: Configuration

PTZ Cameras: Control of Presets and Tours with Schedules

SeMSy[®] III

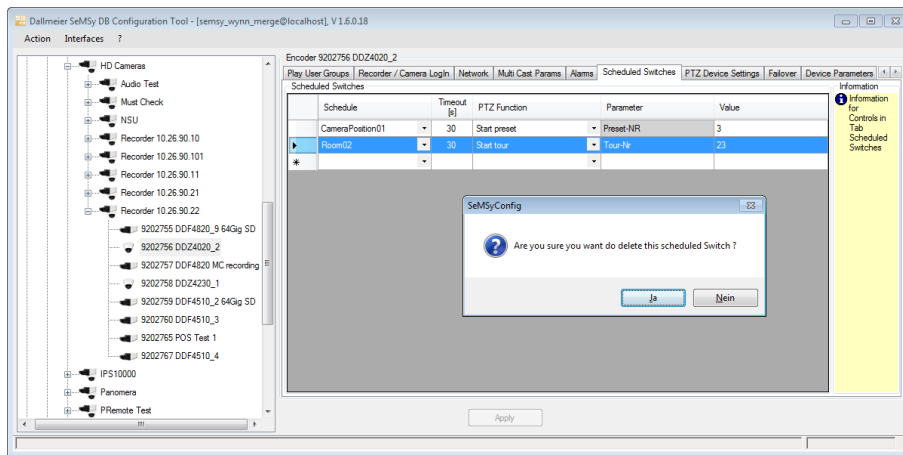


Fig. 10

⇒ Confirm the subsequent info dialog.

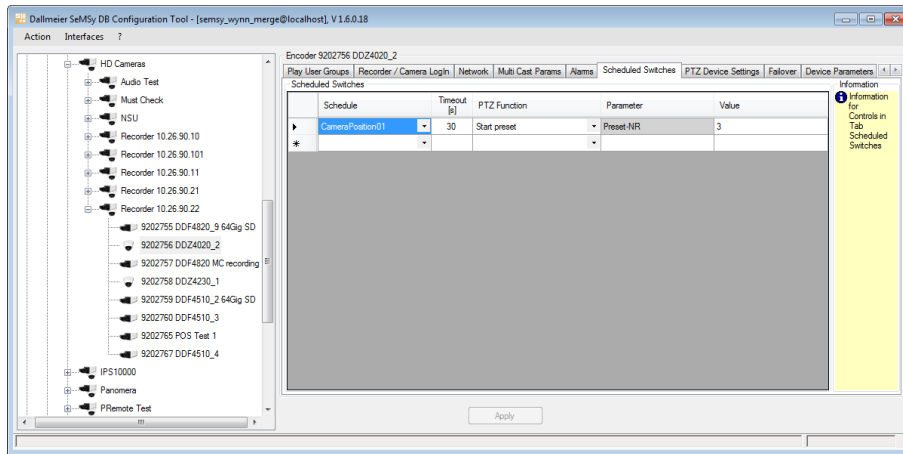


Fig. 11

The schedule is removed.