

Sequencer as a Service: Operation

Using the Sequencer Module in the Global Service Mode

SeMSy® III

SeMSy® III is a high-performance and future-proof video management system with optimum user friendliness. It offers a comprehensive range of functions, including the display of live images, various search options within the footage, the control of PTZ cameras and easy archiving of relevant sequences.

The **Sequencer** module is part of the SeMSy® III Workstation Software. The module allows the definition and playback of sequences consisting of different cameras in a particular order. A sequence can be made up of individual encoders/cameras, multiple sequence groups or salvos (split views). The **Sequencer** module can run locally on a workstation or globally in a SeMSy® III system as a service application. However, only one operating mode is possible for the **Sequencer** in a SeMSy® III system.

The advantage of running the **Sequencer** as a service is that running sequences are not stopped when, for example, the concerning workstation is shut down. In addition, sequences are not bound to fixed decoders in the service mode and can therefore even be connected several times to different decoders.

This handout provides an overview of the use and the operation of the **Sequencer** module in the service mode on a workstation with the SeMSy® III Workstation Software.



Sequencer icon in the module launch bar

⇒ Open the **Sequencer** module via the module launch bar.

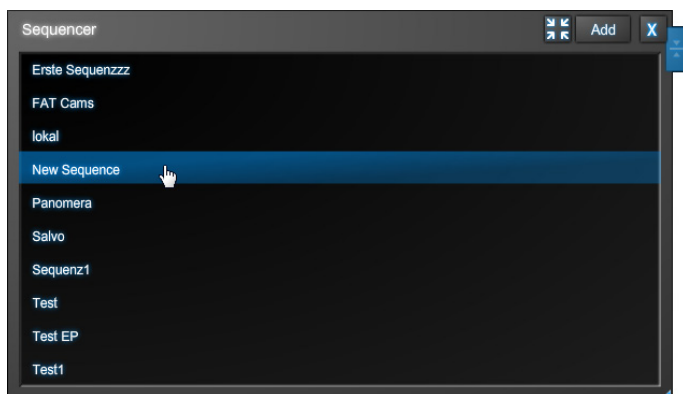


Fig. 1

⇒ Select the required sequence in the displayed list.

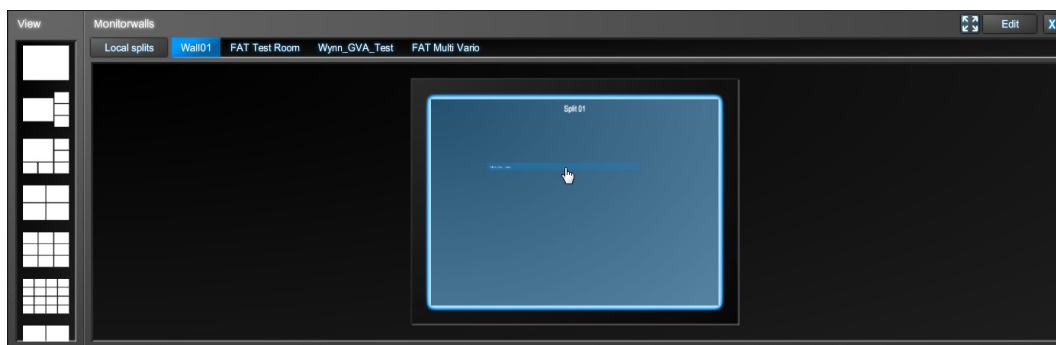


Fig. 2

⇒ Move the sequence in a monitor split of the **Monitorwalls** module by dragging and dropping.

Sequencer as a Service: Operation

Using the Sequencer Module in the Global Service Mode



The playback of the sequence starts immediately.

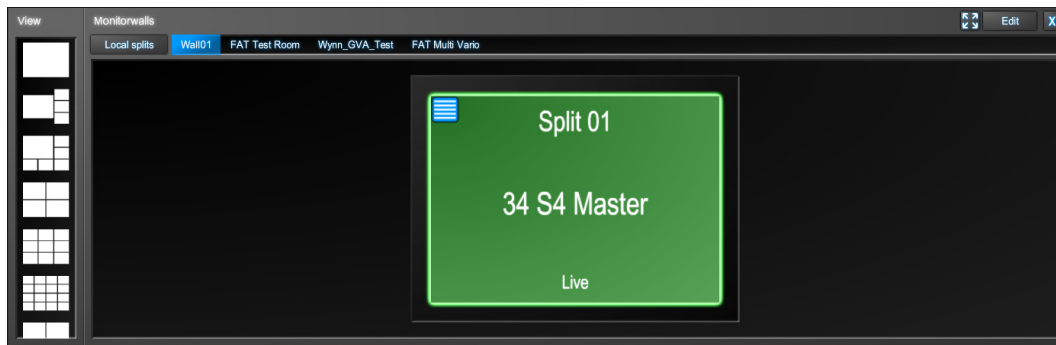


Fig. 3

An active sequence is displayed with the sequence icon in the upper left split corner:

- Running sequence
- Paused sequence

A sequence can be activated several times on different splits and monitors.

An activated sequence can be controlled via the sequence icon.

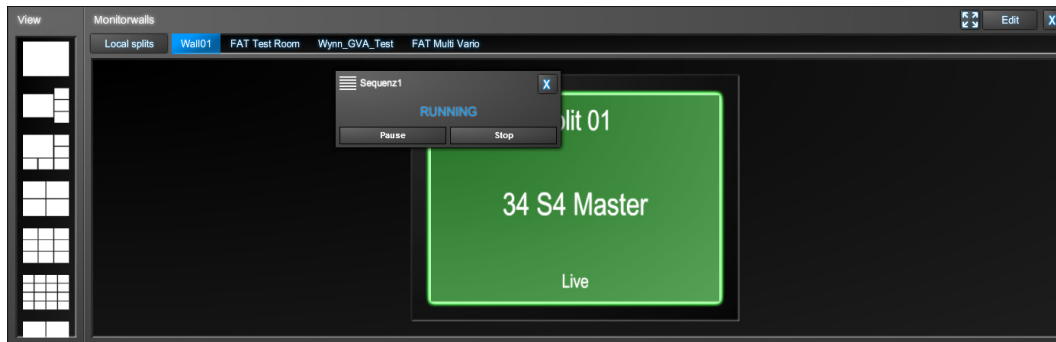
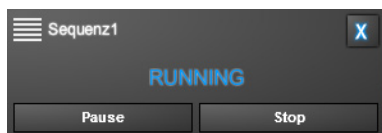


Fig. 4

⇒ Click the sequence icon to open the context menu:



The status of the sequence is displayed in the middle of the context menu.

Fig. 5

⇒ Click **Pause** to suspend a running sequence.

Sequencer as a Service: Operation

Using the Sequencer Module in the Global Service Mode

SEMSy[®] III

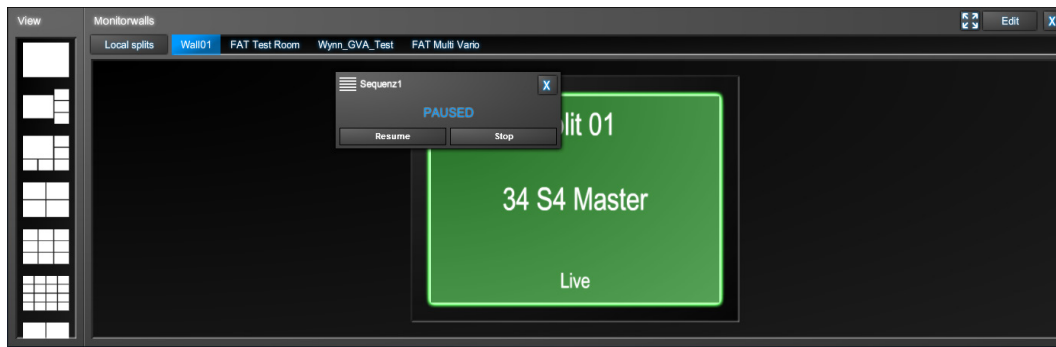


Fig. 6

The new status of the sequence is displayed in the context menu.

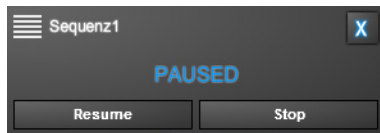


Fig. 7

- ⇒ Click **Resume** to restart the paused sequence.
- ⇒ Click **Stop** to completely stop playing a sequence.