

DBHWGC – Pole Mount Adapter

Pole Mount Adapter DBHWGC for Pole Diameters 210 – 225 mm (8.3 – 8.6")

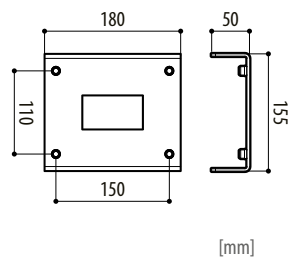


Features

- Suitable for pole diameters 210 – 225 mm (8.3 – 8.6")
- Compatible with wall mount brackets WBMA and WBOVA2
- Installation with Support Plate WCPA

Specifications

- Construction material: Steel
- Load rating: 25 kg (55 lb)
- Color: RAL 9002 (grey white)
- Weight: 1.2 kg (2.6 lb)



Adapter

004388



DBHWGC – Pole Mount Adapter

Pole mount adapter DBHWGC for pole diameters 210 – 225 mm (8.3 – 8.6")

Dallmeier electronic GmbH & Co.KG | Bahnhofstr. 16, 93047 Regensburg, Germany | +49 941 8700-0 | dallmeier.com

All trademarks identified by * are registered trademarks of Dallmeier electronic GmbH & Co.KG.

Third-party trademarks are named for information purposes only. Dallmeier electronic respects the intellectual property of third parties and always attempts to ensure the complete identification of third-party trademarks and indication of the respective holder of rights. In case that protected rights are not indicated separately, this circumstance is no reason to assume that the respective trademark is unprotected.

Specifications subject to change without notice. Errors and misprints excepted. Pictures may differ from the actual product.



See more.