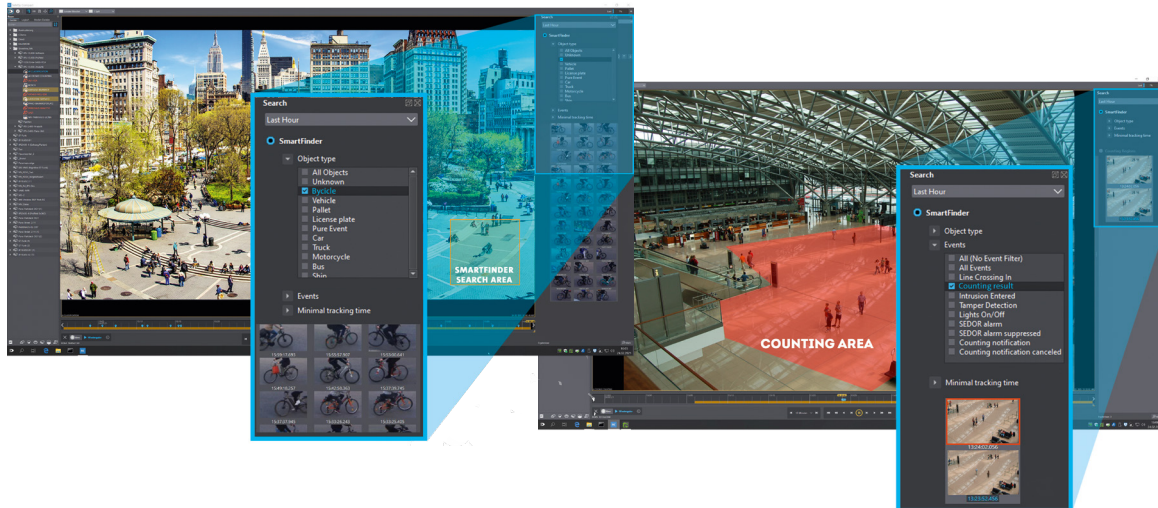


SeMSy® Compact

Video management software for comprehensive and independent control and evaluation of video security systems on a dedicated workstation



SeMSy® Compact is a stand-alone video management software for the comprehensive control and evaluation of video security systems on a dedicated workstation. In addition to the fast and intuitive display of live views, the integrated functions support efficient evaluation of recordings.

Functions

SeMSy® Compact offers a variety of functions for the management of the entire system. These range from integrated user administration to functions for creating and managing local backups with the integrated backup manager.

Comfort Functions

SeMSy® Compact offers comfort functions that allow relevant sequences to be found quickly and conveniently on the basis of analysis data. The advanced SmartFinder function displays search results with preview images and enables filtering based on the available analysis criteria. The relevant sequences are also clearly displayed in the timeline. The operator can thus conveniently compare the search results and display the sequences he is looking for by drag & drop.

AutoTracking

The optional SeMSy® Compact AutoTracking function uses the VCA data of Dallmeier network cameras and Panomera® systems. While the video stream is displayed (live and playback), the analysis data allows the detection of image areas with moving persons or objects. These areas are displayed optimally zoomed in a detail split and ensure a targeted attention control during the evaluation.

AI Pixelation¹⁾

SeMSy® Compact allows optionally and in combination with the Deep AI object classification on Dallmeier cameras and Panomera® systems the pixelation of objects (persons, vehicles, etc.) during the display of a video stream. The function is available for both live images and recordings and can be activated for a defined user group.

Dashboard

The optional SeMSy® Compact Dashboard displays the VCA data of the event types Line Crossing, Intrusion Detection and Object Counting of Dallmeier network cameras and Panomera® systems in a separate window as a bar chart. In addition to a basic overview of all events, individual cameras can be selected for the evaluation of the recorded events over the course of the day.

Licensing

SeMSy® Compact is licensed by means of a Client Access License on the connected recording systems. The scope of delivery already includes the license for simultaneous access with basic functions for two SeMSy® Compact clients. For using the Timeline, Interval Jumps and SmartFinder function, the recording system must also have a valid license for the use of comfort functions and maintenance.²⁾ For the use of the optionally offered extended functions, a SeMSy® Compact Pro Dongle is required.

Maintenance

New versions of SeMSy® Compact are always offered as a full installation, which can be executed without further action. For the update of the optionally offered extended functions, a SeMSy® Compact Pro Dongle is required. It already contains a 12-month license for the update of the extended functions. This license can be extended ex works but also subsequently by another 12 months up to a total of 60 months.

Further Features

- Split definition function for Panomera® supported
- Corridor mode function for Panomera® supported
- Overview mode function for Panomera® supported
- Zoom with overview function for Panomera® supported
- Backup Manager function supported
- SmartZoom function for PRemote-HD supported
- Compatible with SeMSy® Recording Server

System Requirements

Dallmeier Workstation 4 (variant 401) or comparable³⁾:

- CPU 8-Core 3.1GHz (Base)
- 32 GB DDR5 RAM
- 512 GB NVMe M.2 SSD
- Graphics cards: 1x NVIDIA T400 + 1x NVIDIA GeForce RTX 4060
- Min. screen resolution 1920 × 1080 px
- Windows 10 and 11 Pro operating system (64 bit)

1) SeMSy® Compact uses the analysis data from the cameras as the basis for the pixelated display. The performance requirement for the pixelated display (number of splits displayed, number of pixelated objects) is negligible if the workstation meets the system requirements. Pixelation is not supported in connection with backups.

2) After a gap-free Premium licensing period of 60 months, the comfort functions and extensions can be used with SeMSy® Compact Clients for an unlimited period of time.

3) Virtualized graphics processors (GPUs) are not supported.

SeMSy® Compact

Video management software for comprehensive and independent control and evaluation of video security systems on a dedicated workstation

SeMSy® Compact Pro Dongle	
008663.401	SeMSy® Compact Pro Dongle (Pro Max) Dongle for the licensing of the extended functions of SeMSy® Compact, license for the update of the extended functions included for 12 months, licenses for the extended functions not included, 1x Dallmeier License Dongle (Pro Max)
008663.402	SeMSy® Compact Pro Dongle (Net 10) Dongle for the licensing of the extended functions of SeMSy® Compact, license for the update of the extended functions included for 12 months, licenses for the extended functions not included, 1x Dallmeier License Dongle (Net 10)
008663.406	SeMSy® Compact Pro Dongle (Net 250+) Dongle for the licensing of the extended functions of SeMSy® Compact, license for the update of the extended functions included for 12 months, licenses for the extended functions not included, 1x Dallmeier License Dongle (Net 250+)
Licenses for the Extended Functions of SeMSy® Compact	
008347	DLD - SC Multi Display Split-View License for use of the function for displaying split views on up to three connected monitors, for one SeMSy® Compact Workstation, 1x license for SeMSy® Compact Pro Dongle
008579	DLD - SC Monitorwall License for the use of a monitor wall connected to the workstation, display of a single split spanned across multiple monitors supported, for one SeMSy® Compact Workstation, 1x license for SeMSy® Compact Pro Dongle
008581	DLD - SC Combined Camera or Panomera® View License for the use of the function for displaying combined cameras or Panomera® systems, for one SeMSy® Compact Workstation, 1x license for SeMSy® Compact Pro Dongle
009228	DLD - SC Client AI Pixelation License for the use of the function for displaying pixelated objects (persons, vehicles, etc.) based on the Deep AI object classification of Dallmeier cameras and Panomera® systems, for one SeMSy® Compact Workstation, 1x license for SeMSy® Compact Pro Dongle
Maintenance for the Extended Functions of SeMSy® Compact	
008665	DLD - SeMSy® Compact Extended Functions Maintenance (Plus 12 Months) License for the installation of security updates and updates for the extended functions of SeMSy® Compact for 12 months, 1x license for SeMSy® Compact Pro Dongle (valid for all included advanced features and in case of network dongle (Net10, Net 250+) for multiple workstations)
008724	DLD - SeMSy® Compact Extended Functions Maintenance (Total of 60 Months) License for the installation of security updates and updates for the extended functions of SeMSy® Compact for 60 months, 1x license for SeMSy® Compact Pro Dongle (valid for all included advanced features and in case of network dongle (Net10, Net 250+) for multiple workstations)
Service	
008583	DSI - Panomera® Combination Combination of several Panomera® systems by adapting and linking the geometry data for display with Dallmeier Client Software as a complete image, billing according to time and effort, price per hour
008584	DSI - Camera Combination Combination of several Dallmeier single sensor cameras by adapting and linking the geometry data for display with Dallmeier Client Software as a complete image, billing according to time and effort, price per hour

SeMSy® Compact

Video management software for comprehensive and independent control and evaluation of video security systems on a dedicated workstation

Licenses for Dallmeier recording systems	
007238	DLC - SC AutoTracking for Single Sensor Camera License for the use of the SeMSy® Compact AutoTracking function (multiple object tracking without loss of the overall image) in conjunction with a Dallmeier network camera with VCA support, only in connection with recording systems with a valid license for the use of comfort functions and maintenance
007239	DLC - SC AutoTracking for Panomera® S/W 4 License for the use of the SeMSy® Compact AutoTracking function (multiple object tracking without loss of the overall image) in conjunction with a Panomera® S/W 4 system with VCA support, only in connection with recording systems with a valid license for the use of comfort functions and maintenance
007237	DLC - SC AutoTracking for Panomera® S/W 8 License for the use of the SeMSy® Compact AutoTracking function (multiple object tracking without loss of the overall image) in conjunction with a Panomera® S/W 8 system with VCA support, only in connection with recording systems with a valid license for the use of comfort functions and maintenance
007092	DLC - SC Dashboard License for the use of the SeMSy® Compact Dashboard function (graphical display of the analysis data Line Crossing, Intrusion Detection and Object Counting including object types), only in connection with Dallmeier network cameras and Panomera® systems with VCA support, only in connection with recording systems with a valid license for the use of comfort functions and maintenance

Workstation	
	009157.401 Workstation 4 Tower (Standard) Workstation, midi tower, Xeon-W 8-core 3.1GHz CPU, 32 GB DDR5 RAM, 512 GB M.2 SSD, 1x power supply 1200 W, 1x keyboard, 1x mouse, 1x license for Microsoft Windows 11 Pro (64 bit), without HDDs, 1x NVIDIA T400 graphics card (decoding) + 1x NVIDIA GeForce RTX 4060 graphics card (decoding and display)
	009157.402 Workstation 4 Tower (Professional) Workstation, midi tower, Xeon-W 8-core 3.1GHz CPU, 32 GB DDR5 RAM, 512 GB M.2 SSD, 1x power supply 1200 W, 1x keyboard, 1x mouse, 1x license for Microsoft Windows 11 Pro (64 bit), without HDDs, 1x NVIDIA T400 graphics card (decoding) + 1x NVIDIA RTX 4000 SFF graphics card (decoding and display)
	009176.401 Workstation 4 Rack-Mount (Standard) Workstation, 4 RU rack-mount, Xeon-W 8-core 3.1GHz CPU, 32 GB DDR5 RAM, 512 GB M.2 SSD, 2x redundant power supply 1200 W, 19" mounting rail kit, 1x license for Microsoft Windows 11 Pro (64 bit), without HDDs, 1x NVIDIA T400 graphics card (decoding) + 1x NVIDIA GeForce RTX 4060 graphics card (decoding and display)
	009176.402 Workstation 4 Rack-Mount (Professional) Workstation, 4 RU rack-mount, Xeon-W 8-core 3.1GHz CPU, 32 GB DDR5 RAM, 512 GB M.2 SSD, 2x redundant power supply 1200 W, 19" mounting rail kit, 1x license for Microsoft Windows 11 Pro (64 bit), without HDDs, 1x NVIDIA T400 graphics card (decoding) + 1x NVIDIA RTX 4000 SFF graphics card (decoding and display)

