



DALLMEIER SOLUTIONS FOR
STADIUMS

SECURE. INTELLIGENT. EFFICIENT.



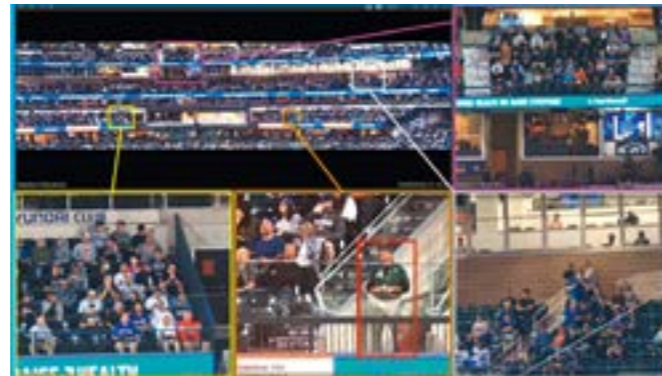


STOP LOOKING IN THE WRONG DIRECTION

360° COVERAGE IN HIGHEST RESOLUTION

BOWL SURVEILLANCE

Comprehensive stadium bowl surveillance ensures complete visual coverage with no blind spots, capturing every seat and spectator in high resolution. A single integrated system allows seamless switching between full overview and detailed zoom. Camera layouts are individually adapted to each stadium's structure, enabling efficient monitoring, incident analysis, and reliable evidence collection in large crowd environments.



- + Seamless High-Res Bowl Surveillance
- + Simultaneous Multi-User Monitoring
- + Less Installation Points and Infrastructure Costs

PITCH COVERAGE

The entire playing field is monitored in high resolution, capturing every detail across large areas. This allows precise documentation of on-field incidents for security, match operations, and post-event analysis. The system achieves this with minimal hardware while maintaining excellent image quality, making it suitable for various sports and events.



- + Full Pitch Coverage in High Resolution
- + Real-Time Capture at 30 fps Without Loss of Detail
- + Minimal Camera Setup Required

PANOMERA® S4/8 Stadium



10,000 SEATS WITH ONLY ONE CAMERA



MULTIFOCAL SENSOR TECHNOLOGY – WHY PANOMERA®

- **8 Lenses + 8 Sensors + 8 AI Chips** for maximum imaging and AI performance
- **Ultra-wide dynamic range** for challenging light conditions beyond single-sensor limits
- **66 MP @ 30 fps** with multi-focal coverage of large scenes
- **Unlimited virtual PTZs** for simultaneous multi-user viewing
- **Full scene overview while zooming in** – live and in playback
- **High-performance analytics** powered by 8 integrated AI chips

HOSPITALITY & VIP AREAS

Sensitive and restricted areas are monitored discreetly while maintaining high image quality. The system protects staff, players, and VIP guests, ensuring compliance with security protocols without intrusive installations. It provides reliable coverage in premium and operational zones where discretion is essential.



- + Discreet Surveillance in Sensitive Areas
- + Protection for Staff and VIPs
- + High Quality Without Intrusive Cameras



ZERO BLIND SPOT

FULL VISIBILITY EVEN DIRECTLY BENEATH THE CAMERA



- + Wide-Area Coverage With No Hidden Spots
- + Real-Time Crowd Flow Monitoring
- + Unlimited Virtual Perspectives From a Single System

FAN ZONES & CONCOURSE AREAS

Advanced wide-angle technology enables complete visibility across busy fan zones and concourses, including areas directly beneath the cameras. Designed for dynamic, high-density environments, the system supports real-time monitoring of crowd movement, congestion, and behavior. It significantly enhances safety and situational awareness in social and hospitality spaces.



- + Detailed Monitoring of All Entry Points
- + Integration With Access Systems
- + Efficient Handling of Peak Crowd Flow

PANOMERA® V8 Series

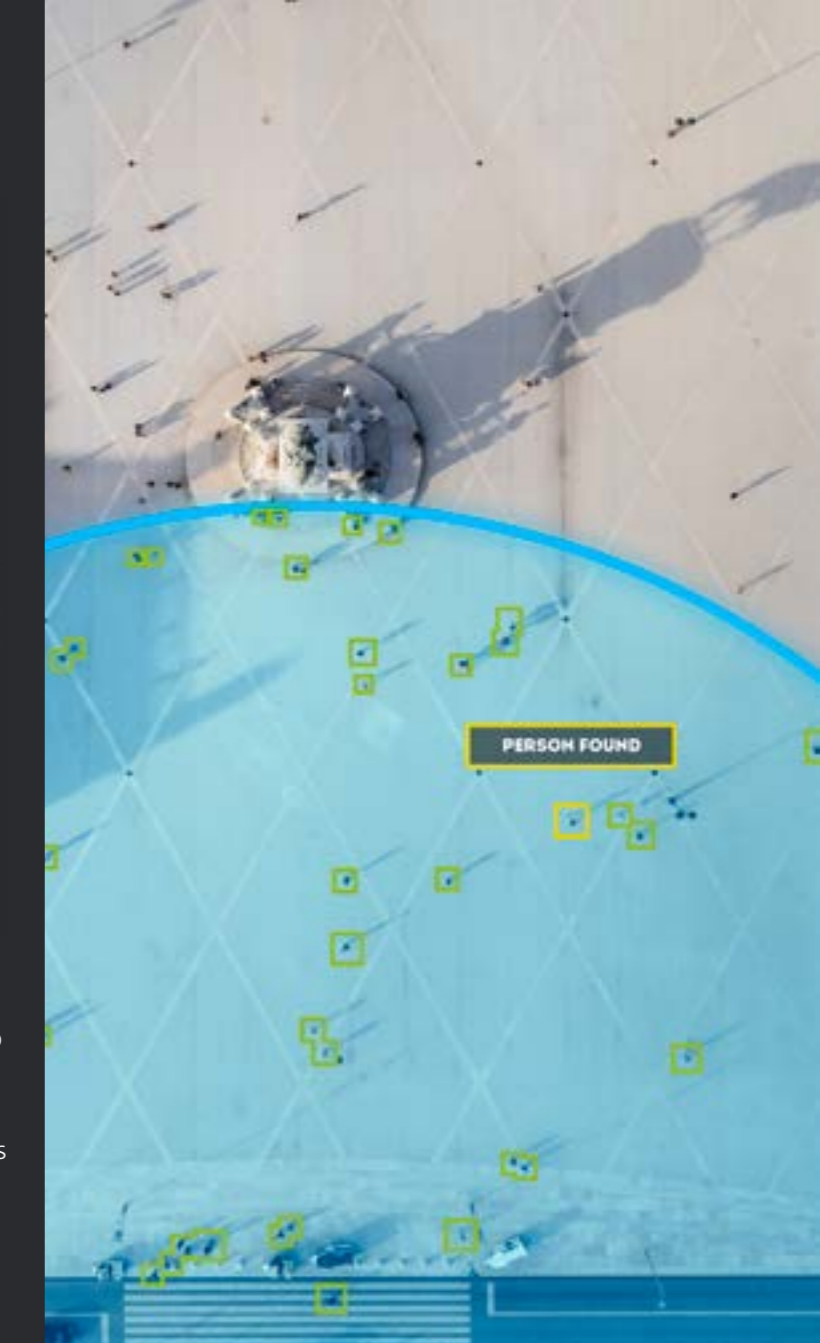


180° WITHOUT BLIND SPOT

The combination of a 180° field of view with the ability to logically link the neural networks of the eight integrated AI chips enables even large, contiguous scenes to be analyzed accurately. This eliminates the biggest weakness of many video analysis systems: incomplete, patchy, or duplicate data.



- + Wide Coverage With Fewer Cameras
- + Early Threat Detection Outside the Venue
- + Robust Performance Under Changing Lighting and Weather Conditions



PARKING LOT & PERIMETER

Large outdoor areas such as parking lots are covered efficiently with fewer cameras, while still enabling clear identification of people and vehicles over long distances. The system improves safety for visitors and supports investigations, traffic management, and patrol operations. Potential threats are detected early, before reaching the venue. It performs reliably in different lighting and weather conditions.

YOUR SECURITY - OUR VISION.

PATENTED VIDEO TECHNOLOGY MADE IN GERMANY

KEY ADVANTAGES

PEACE OF MIND

Reliable, always-on coverage trusted by leading stadiums worldwide.

INTELLIGENCE & INSIGHTS

Leverage advanced analytics to turn data into actionable decisions.

SAFETY & COMPLIANCE

Ensure maximum crowd safety through comprehensive surveillance coverage and full regulatory compliance.

IMAGE QUALITY

Capture every detail with ultra-high-resolution, panoramic imaging.

OPERATIONAL EFFICIENCY

Streamline workflows and reduce complexity for faster, smarter operations.

VMS FIT & FLEXIBILITY

Dallmeier's scalable software platforms seamlessly combine video management, incident management, and third-party system integration.

COST EFFICIENCY

Minimize installation, infrastructure, and long-term operating costs.

FUTURE-PROOF & SCALABLE

Adapt and grow with flexible, upgradeable technology built for tomorrow.

SECURE BY DESIGN

"Made in Germany" is making a comeback in video technology: integrity, quality and reliability are more in demand than ever. That is why we consistently develop and produce our camera, recording and software solutions at our Regensburg site.

The result: GDPR- and NDAA-compliant systems for video surveillance and process optimization – specially tailored to the requirements of stadiums and their complex security and operational processes.

 **MADE IN GERMANY**

SEE MORE.



"We're no longer limited by what a PTZ camera happened to be looking at. Panomera® gives us confidence and control – even when reviewing past events."

Joseph Seminara, Citi Field New York,
Vice President of Strategic Security Operations



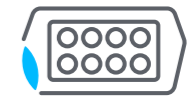
75%

of Premier League Clubs
Use a Dallmeier Solution



>100

Stadiums Worldwide Chose
"Made in Germany"



>4M

Seats Covered by
Panomera® Systems

QUALITY

- "Made in Germany" to the Highest Quality Specifications
- Certified for ISO 9001 (Quality Management) and ISO 27001 (Cybersecurity)
- Highest Possible Depth of Manufacture for Research, Development and Production

TRUST

- Transparency of Source Codes for Code Inspection
- Politically and Economically Independent
- Broad Portfolio of Technical Security and Privacy Features
- "No Backdoors" Policy

Let's talk about your project!

 info@dallmeier.com

 +49 941 8700-0



Dedicated to quality. Driven by passion.

Dallmeier electronic GmbH & Co.KG
Bahnhofstr. 16
93047 Regensburg
Germany

Tel: +49 941 8700-0

info@dallmeier.com
www.dallmeier.com