

## Image Backup After Hold-Up

### 1 Hold-Up Button

Has the hold-up button been pushed?

#### YES

- Wait until the end of the alarm (alarm LED).
- Proceed with Step 2.

#### NO

- Immediately push the hold-up button.
- Wait until the end of the alarm (alarm LED).
- Proceed with Step 2.

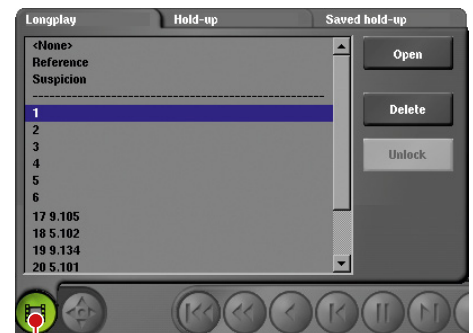
### 2 Login

- Move the mouse pointer to the bottom of the display. The **Login** button is displayed.
- Click the **Login** button. The virtual keyboard is displayed.
- Enter the password.
- Confirm with **OK**.



### 3 Track Selection

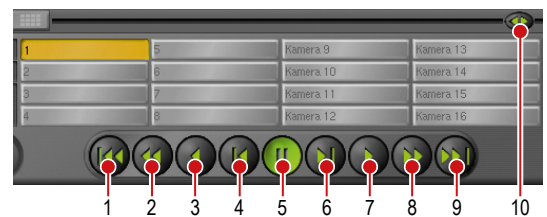
- Left-click the *Track selection* button. The *Track selection* panel is displayed.
- Select the track type (tab).
- Select the track.
- Click **Open**.



Track selection button

### 4 Search Image

- 1 + 9 *Track start / Track end*
- 2 + 8 *Fast playback backward / forward*
- 3 + 7 *Playback backward / forward*
- 4 + 6 *Single image backward / forward*
- 5 *Stop*
- 10 *Slider*



### 5 Select Sequence

#### 5.1 Sequence Start

- Find the oldest image of the sequence (start of the event).
- Click the *Image backup* button.
- Click the **Sequence start** button.



Image backup button

### 5.2 Sequence End

- Find the latest image of the sequence (end of the event).
- Click the *Image backup* button.
- Click the **Sequence end** button.
- Proceed analogously for all required sequences.



Image backup button

### 5.3 Further Cameras / Tracks

- Repeat the steps 3 to 5.2 for each further camera / track.
- Finally click the *Image backup* button.
- Click the **Export ...** button.

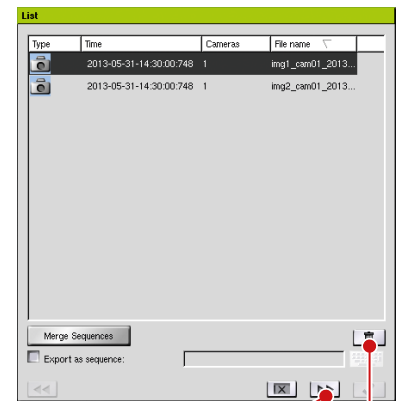


### 5.4 Export List

The **List** dialogue is displayed.

- Check the export list.
- Insert a DVD-RW or connect a USB stick.
- Confirm with the *Next* button.

Images or sequences can be selected and removed from the export list with the *Delete* button.



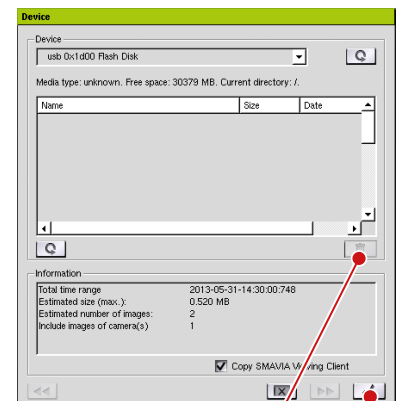
Next Delete

### 5.5 Device

The **Device** dialogue is displayed.

- Select the required **Device** from the dropdown menu.
- Check the available **Free space**.
- Confirm with the *OK* button.

Files on a rewritable medium can be selected and removed with the *Delete* button.

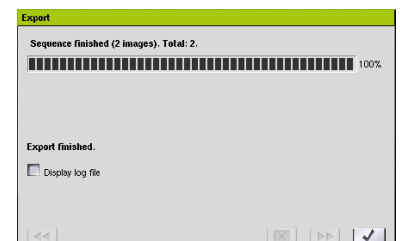


Delete OK

### 5.6 Completion

The **Export** dialogue is displayed.

- Note the progress bar.
- Wait until the **Export finished** message is displayed.
- Confirm with the *OK* button.
- Close the playback mode.
- Remove the storage medium.



The display of the **log file** can be enabled anytime for more information.