

Ethernet I/O Interface

The SMAVIA recording server software allows to trigger actions and functions of contact events.

Contact events are enabled by:

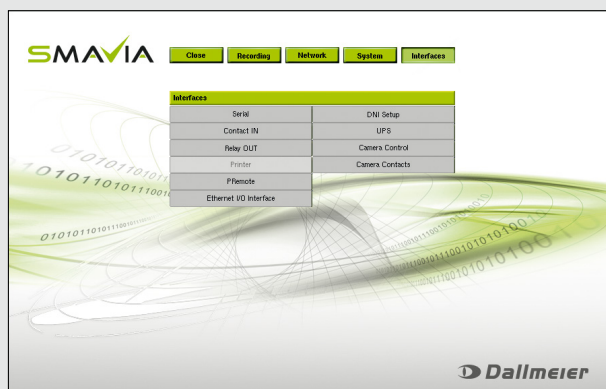
- Kontakt IN interface of the appliance (HW)
- DaVid protocol (IP)
- ONVIF camera
- Ethernet I/O interface



Compatible firmware versions:

- MOXA ioLogik E1210 - V2.0 Build13041515
- MOXA ioLogik E1214 - V2.3 Build15031013

Step 1: Initialization Ethernet I/O Interface



- Open the configuration interface of the appliance.
- Open the **Ethernet I/O Interface** dialog via **Interfaces > Ethernet I/O Interface**.



Up to 24 Ethernet I/O interfaces can be configured on an appliance. The number of contacts (“DI Count”) and relays (“DO Count”) is dependent on the used Ethernet I/O interface. The current software version supports the connection of the MOXA ioLogik E1210 (16 contacts) and MOXA ioLogik E1214 (6 contacts, 6 relays) interfaces.

- Select the required **Number** for the interface from the drop down menu.
- Click **Scan** in order to search the network for Ethernet I/O interfaces.



The Ethernet I/O interface must be reachable on the network.

The available Ethernet I/O interfaces on the network are displayed with their IP addresses and their properties.

- Double-click the required Ethernet I/O interface.

The **Active** checkbox is marked automatically; **IP Address**, **Port** and the number of digital contact inputs (**DI Count**) are entered automatically.



There is no password preconfigured for the MOXA ioLogik E1210 and MOXA ioLogik E1214 interfaces by default.

- Proceed as described above in order to initialize other Ethernet I/O interfaces.
- Finally, click **OK** in order to save the settings.

The connection data for an Ethernet I/O interface can also be entered manually. For this purpose, select an appropriate **Number** and mark the **Active** checkbox. Then, the required data in the other fields can be entered.

IP	Type	DI Count	DO Count	Number
10.128.30.1	e214	6	6	1
10.128.32.1	e210	16	0	

The SMAVIA recording server software allows to trigger actions and functions of contact events.

Contact events are enabled by:

- Kontakt IN interface of the appliance (HW)
- DaVid protocol (IP)
- ONVIF camera
- Ethernet I/O interface



Compatible firmware versions:

- MOXA ioLogik E1210 - V2.0 Build13041515
- MOXA ioLogik E1214 - V2.3 Build15031013

Step 2: Configuration Of Contacts And Functions

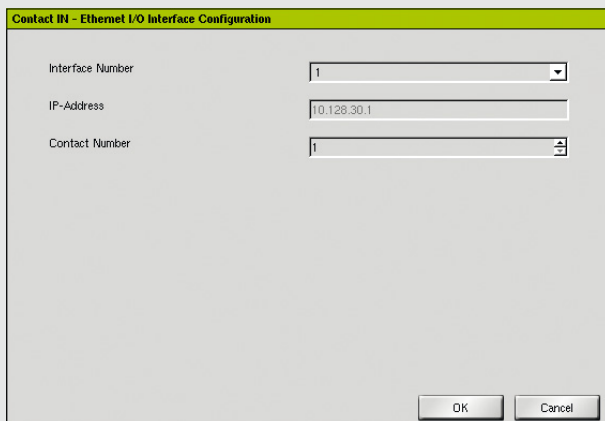
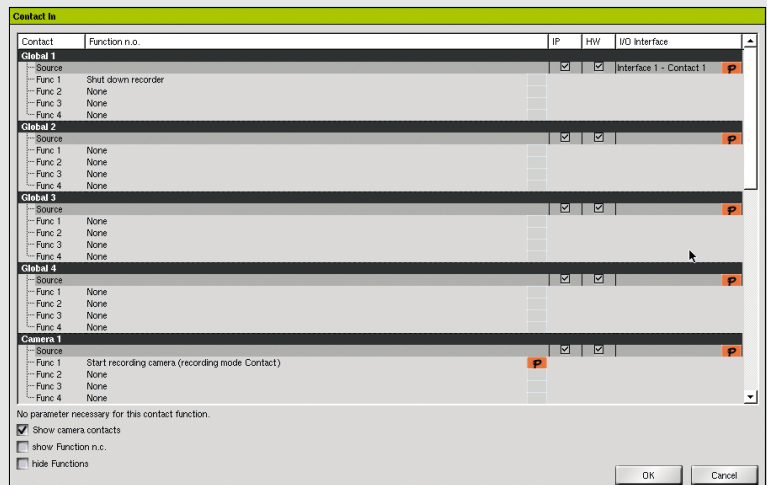
- Open the **Contact IN** dialog via **Interfaces > Contact IN**.
- Select the required contact (**Global** or **Camera**).
- Open the configuration dialog for the contact parameters via the **P** button in the **I/O Interface** column of the respective contact.

Column explanation Contact IN dialog:



IP = DaVid protocol option

HW = Contact IN interface appliance



- Select from the **Interface Number** drop down box the required Ethernet I/O interface as configured in the **Ethernet I/O Interface** dialog.
- Select in the **Contact Number** box the required digital contact of the Ethernet I/O interface.
- Click **OK** in order to save the settings and to close the configuration dialog of the contact parameters.

The contact parameters are displayed in the **Contact IN** dialog in the **I/O Interface** column.

- Select in the **Function n.o. / Function n.c.** column the required function for the contact (see documentation “Configuration” SMAVIA Recording Server).
- Proceed as described above in order to configure further contacts (**Global / Camera**).
- Finally, click **OK** in order to save the settings and close the **Contact IN** dialog.