

The use of **recording systems with RAID configuration** requires the observance of some basic procedures (uninterrupted power supply, HDDs of the same size, etc.). In addition, the experiences in practice show that it is necessary to use **HDDs from the same production series** with identical firmware in order to ensure trouble-free **long-term operation**.

The current version 8.7.8 SP B of the SMAVIA Recording Server software (IPS 2400) has been extended in this regard. **HDDs from different manufactures or production series** are now identified and **indicated as mismatching HDDs**.

i *Mismatching HDDs are indicated for **information purpose only**. The ongoing recording and further functions of the recording system are not affected in any way.*

Overview

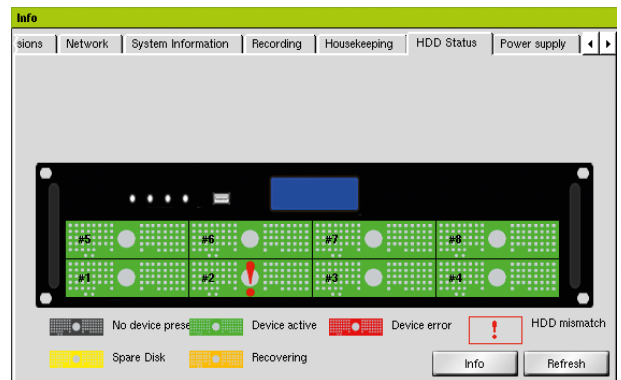
The **HDD Status** is displayed on the corresponding tab in the **Info** dialog.

- ▶ Open the **Info** dialog via **Setup > System > Info**.
- ▶ Select the **HDD Status** tab.

HDDs that do not match the majority of the connected HDDs are indicated with a **red exclamation mark**.

This example shows a working RAID 6 system with one mismatching HDD. They **should be replaced with a matching HDD**.

i *The general HDD status labels are always displayed. The label **HDD mismatch** is only displayed on RAID 5/6 systems in case of an actual mismatch.*



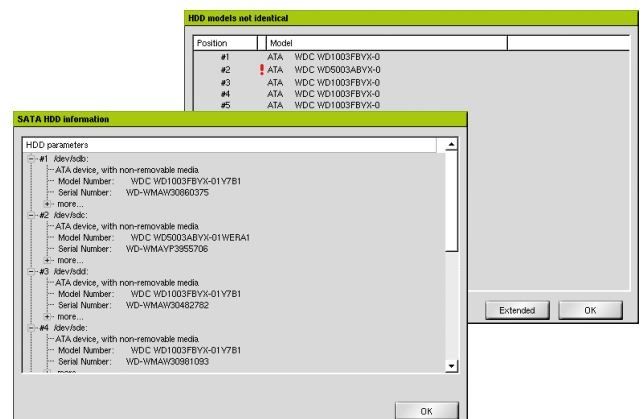
Detailed Information

The **HDD models** dialog provides the **model number** of all connected HDDs. Mismatching HDDs are again indicated with a red exclamation mark.

- ▶ Open the **HDD models** dialog with a click on **Info** in the **HDD Status** tab.

The **SATA HDD Information** dialog provides the **serial number** of all connected HDDs.

- ▶ Open the **SATA HDD Information** dialog with a click on **Extended** in the **HDD models** dialog.



LCD Display

The LCD display on the **front side of the device** also indicates mismatching HDDs.

General HDD mismatch indication
 HDD is used as spare drive
 HDD is in recording mode
 HDD is in recovery mode

Regular HDD	Mismatching HDD
SSS	HDD MISMATCH
HDD	S!S
000	H!D
	0!0

General Recommendations

Observe the following **recommendations** in order to ensure trouble-free **long-term operation**:

- Use server HDDs that are specially certified for **24/7 operation**.
- Replace a defective HDD with a HDD from the **same production series** with identical firmware.
- Create a **supply of HDDs** from the **same production series** with identical firmware.
- Exchange all HDDs from a recording system **after a runtime of 3 years** at the latest.

i *For further information regarding lifetime, statistical failure probability and practical experience, please refer to the white paper **HDD Lifetime & RAID Systems**.*