

DDZ41xxHD and DDZ42xxHD

Recording Configuration

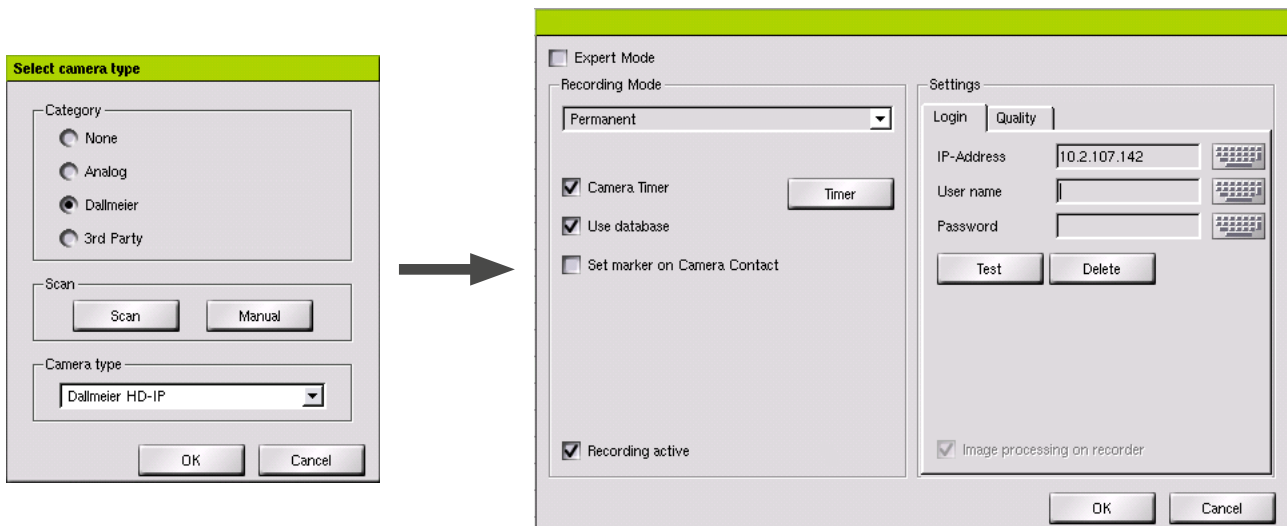
SMAVIA Recording Server supports the configuration of the recording with the **Scan** function as of version **8.x.9**.

The available Dallmeier IP cameras are shown in a list. After the selection of a DDZ41xxHD or DDZ42xxHD, the settings on camera type, IP address and control protocol are automatically applied.

If an earlier version of SMAVIA Recording Server is used, the camera type, IP address and control protocol can be entered manually.

- ⇒ Open the configuration dialog of the relevant channel.
- ⇒ Select the category **Dallmeier**.
- ⇒ Click **Manual**.
- ⇒ Select the camera type **Dallmeier HD-IP**.
- ⇒ Confirm with **OK**.

The configuration dialog of the camera is displayed.



- ⇒ Enter the **IP Address** of the camera.
- ⇒ Make the required settings.
- ⇒ Confirm with **OK**.

The configuration of the recording is finished. Subsequently, the control protocol can be set.

- ⇒ Execute a right-click in the **Control** column.
- ⇒ Confirm the security prompt with **OK**.

The configuration dialog for the control protocol is displayed.



- ⇒ Set the camera ID **1**.
- ⇒ Select the protocol **Dallmeier**
- ⇒ Confirm with **OK**.

The setting of the control protocol is finished.