

VMC Touch Commissioning

Initial Installation And Configuration Of The Touch Monitor In Windows

SeMSy® III

The Touch Monitor with the VMC Touch application extends a SeMSy® III Workstation Software with a simple and convenient multi-touch operation. Many functions of the individual modules of a SeMSy® III Workstation Software can be operated easily and intuitively on the optimized user interface by dragging, wiping, tapping, scrolling, zooming. As a result, users receive a much more flexible way of operating.

For commissioning the Touch Monitor must be connected first to the required workstation. In the next step, the drivers are installed on the workstation and the Touch Monitor is defined in the Windows configuration dialog for input devices as a touch screen.

Connections

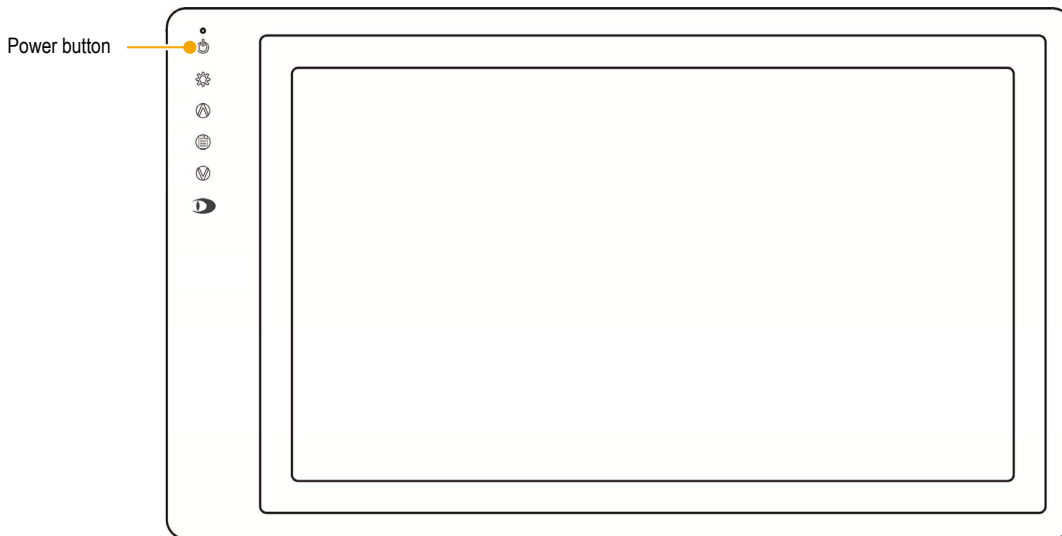


- HDMI = Micro HDMI port for image data transmission
- USB 1 = Micro USB port for touch signal and power supply
- USB 2 = Micro USB port for power supply with external charger (5V 2A)

- Connect the micro *HDMI* port (type D) of the Touch Monitor with a HDMI port type A at the workstation.
- Connect the micro *USB 1* port of the Touch Monitor with an USB port type A at the workstation.

For the power supply, a USB 3.0 port on the workstation is recommended. The power from the combined "USB 1" port is normally sufficient for the operation of the Touch Monitor. If an external charger (5V 2A) is connected to the "USB 2" port of the Touch Monitor, it is powered exclusively through the "USB 2" port and via the "USB 1" port is only transmitted the control data for the touch screen.

Commissioning



- Press the *Power button* at the top of the Touch Monitor.

The green LED indicates the operational readiness of the Touch Monitor.

Driver Installation

After connecting the Touch Monitor to the workstation and the commissioning through the *Power button*, the required drivers are automatically installed via Windows Update.

An Internet connection is required for the automatic driver installation with Windows Update.

- Wait until the end of the driver installation.

VMC Touch Commissioning

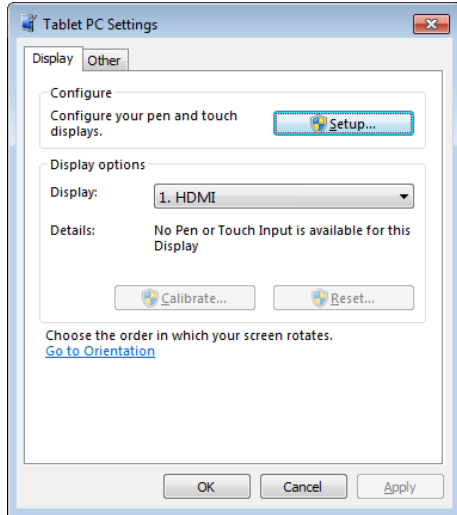
Initial Installation And Configuration Of The Touch Monitor In Windows

Touchscreen Configuration

The Touch Monitor is initially registered as a touch screen in the operating system. In the next step, the Windows touch input function for movements to perform commonly used actions must be disabled in order to ensure the full functionality of the VMC Touch application.

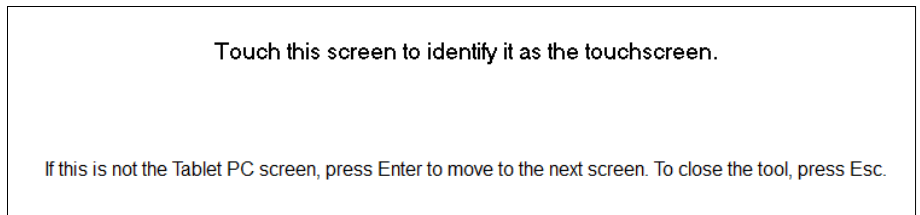
Administrator rights are required for the configuration of the Touch Monitor.

- Open the required configuration dialog via **Control Panel > Tablet PC Settings** on the workstation.



- Select the **Display** tab.
- Start the configuration process with **Setup**.

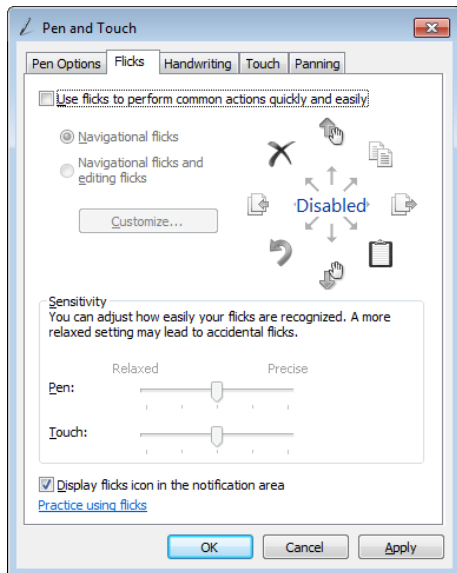
All workstation monitors change to configuration mode and show a white screen. On the first monitor – referred to the defined monitor order under **Control Panel > Display** – the following query is displayed:



- Follow the instructions in the setup dialog:
- Press the **Enter** key until the setup dialog is displayed on the Touch Monitor.
- Tap the touch screen in order to identify it.

The configuration mode is finished.

- Click **OK** in order to close the **Tablet PC Settings** dialog.
- Open the required configuration dialog via **Control Panel > Pen and Touch**.



- Select the **Flicks** tab.
- Disable the **Use flicks to perform common actions quickly and easily** option.
- Confirm the settings with **OK**.

- Start the SeMSy® III Workstation Software.
- Make the further settings for the configuration of the VMC Touch application as described in the documentation “Operation” for “SeMSy® III VMC Touch”.

For the operation of the VMC Touch application must have the SeMSy® III workstation the appropriate license.