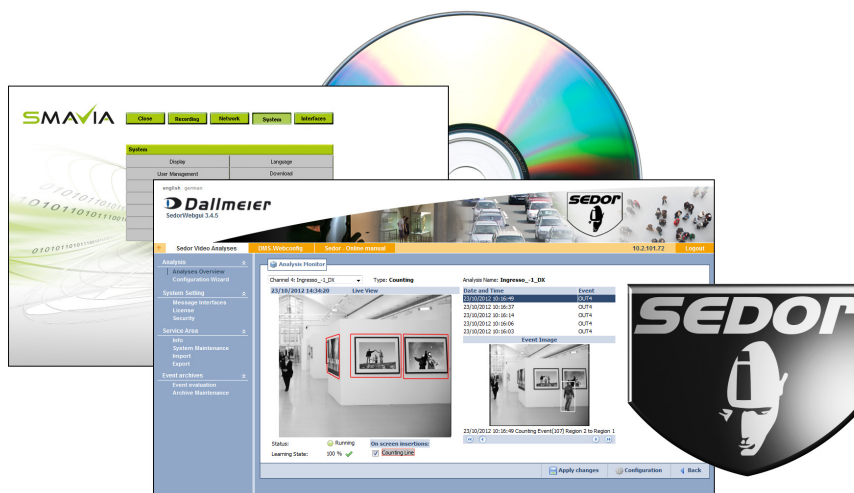


DVS Analysis Server

SEDOR® Video Analysis Server Software, Analysis and Recording, up to 24 IP Channels



SEDOR® is a high-performance and self-learning video analysis system which provides outstanding analytical results due to state-of-the-art image analysis algorithms and the constant adjustment of the system parameters to the current surrounding conditions (auto-adaptation). If used together with the different **applications**, it can serve a variety of surveillance and counting purposes.



DVS Analysis Server is a SEDOR® video analysis server software for the analysis of up to 24 IP-based video streams. It is designed for the installation on dedicated and qualified server hardware and is configured with a browser over Ethernet using the integrated **SEDOR® WebGUI**. Together with the optional licenses for the various **SEDOR® applications** up to 24 channels can be used for video analysis according to demand.

The integrated recording software **SMAVIA Recording Server** is a VideoIP server software for the storage and playback of up to 24 IP-based audio and video streams. The corresponding software **SMAVIA Viewing Client** for Windows operating systems allows for an independent and convenient evaluation of the recordings via Ethernet (LAN/WAN).

Features DVS Analysis Server

- Up to 24 analysis channels
- Supports Dallmeier network cameras
- SEDOR® application Art optional
- SEDOR® application Intruder optional
- SEDOR® WebGUI for the analysis configuration over Ethernet included
- Resolution SD (up to D1) and HD (up to 1080p)

Features SMAVIA Recording Server

- **Basic license** for the access of a **SMAVIA Viewing Client** included
- **Free conversion** of the **basic license** to a **floating license** on acquisition of additional access licenses
- License for the connection to **SNMP systems** included
- License for the **recording of multicast video streams** included
- License for **real-time recording** included
- **Recording of 3rd-party IP cameras with motion detection** optional¹⁾
- **Configuration of 3rd-party IP cameras via ONVIF protocol** optional¹⁾
- **PRemote-HD** in real-time optional
- Connection to **Active Directory** via LDAP
- Evaluation with **SMAVIA Viewing Client** or **SeMSy®** via Ethernet

Options	
004177	DVS Analysis Server SEDOR® video analysis server software, up to 24 IP channels, licenses for analysis and recording optional
004440	DVS 2500 SEDOR® video analysis server software preloaded on DVS Analysis Server hardware (HP ProLiant DL385p G8), up to 24x IP-based channels, licenses for analysis and recording optional

1) Note the white paper **SMAVIA & 3rd Party IP Cameras**. Version 8.8.3 is equivalent to DMS 2400 version 8.1.3.

DVS Analysis Server

SEDOR® Video Analysis Server Software, Analysis and Recording, up to 24 IP Channels

Optional Licenses DVS Analysis Server

004247	DLC - 1 Analysis Channel SEDOR® Art License for the simultaneous use of the applications SEDOR® Art and SEDOR® Camera Sabotage P rotection for one channel
004248	DLC - 1 Analysis Channel SEDOR® Intruder License for the simultaneous use of the applications SEDOR® Intruder and SEDOR® Camera Sabotage Protection for one channel
004210	DLC - 1 Analysis Channel SEDOR® Camera Sabotage Protection License for the detailed configuration, detection and reporting of covering, defocusing and twisting of the camera for one channel
000595	DLC - SEDOR® Event Matrix License for the use of the software interface for the connection of Ethernet I/O interfaces

Integrated Licenses SMAVIA Recording Server

DLC - 1 Basic Client Access License for the access of a SMAVIA Viewing Client to a SMAVIA Recording Server (basic license)
DCP - DVS Software Maintenance 12 Months License for the update of the DVS Analysis Server software for 12 months
DLC - SNMP License for the integration into a central SNMP device management system
DLC - Multicast Recording License for recording the video streams of Dallmeier IP cameras transmitting over multicast
DLC - Real-Time Recording License for real-time recording for all IP channels (depends on the camera)

Optional Licenses SMAVIA Recording Server

003782	DLC - 1 Additional Client Access License for the simultaneous access of a further SMAVIA Viewing Client on SMAVIA Recording Server (floating license)
004068	DLC - 5 Additional Client Access License for the simultaneous access of five further SMAVIA Viewing Clients on SMAVIA Recording Server (floating license)
004069	DLC - 10+ Additional Client Access (Unlimited) License for the simultaneous access of an unlimited number of SMAVIA Viewing Clients on SMAVIA Recording Server, depending on system load and bandwidth (floating license)
003783	DLC - 1 Additional Recording Channel License for the use of 1 additional channel for recording with SMAVIA Recording Server
003784	DLC - 2 Additional Recording Channel
003785	DLC - 4 Additional Recording Channel
003786	DLC - 8 Additional Recording Channel
004079	DLC - 12 Additional Recording Channel
004080	DLC - 16 Additional Recording Channel
004588	DLC - PRemote-HD for DVS Analysis Server License for the transmission of SD and HD video at low bandwidth, including a dedicated access license ²⁾
004412	DLC - 3rd Party Package for 1 IP Channel License for recording (constant or with motion detection ³⁾) the video stream of third-party IP cameras, for 1 IP channel
004413	DLC - 3rd Party Package for 2 IP Channels
004414	DLC - 3rd Party Package for 4 IP Channels
004415	DLC - 3rd Party Package for 8 IP Channels
004416	DLC - 3rd Party Package for 12 IP Channels
004417	DLC - 3rd Party Package for 16 IP Channels
004418	DLC - 3rd Party Package for 24 IP Channels

Services

004193	DCP - DVS Software Maintenance 12 Months License for the update of the DVS Analysis Server software for further 12 months
004211	Installation DVS Analysis Server Installation of the DVS Analysis Server software on specified hardware, function test included

2) The first PRemote client (master) is assigned active control over the PRemote stream; further PRemote clients (slaves) receive the stream passively.
3) Note the white paper SMAVIA & 3rd Party IP Cameras, as well as tables "Recording" and "Functions" on page 4. Version 8.8.3 is equivalent to DMS 2400 version 8.1.3.

DVS Analysis Server

SEDOR® Video Analysis Server Software, Analysis and Recording, up to 24 IP Channels

Specifications DVS Analysis Server Software

Max. No. analysis channels	24× IP-based video channels
Supported cameras	Dallmeier IP cameras ⁴⁾
Software	
Operating system	Linux (proprietary, hardened), included in installation
External configuration software	SEDOR® WebGUI via Ethernet
Language	English, German (others on request)
Licenses Applications and Functions	
SEDOR® Art	optional
SEDOR® Intruder	optional
SEDOR® Camera Sabotage Protection	optional
SEDOR® Event Matrix	optional

Specifications DVS Analysis Server Hardware⁵⁾

Hardware	
Device	DVS Analysis Server hardware (HP ProLiant DL385p G8)
Type	Server
Mounting type	Rack-mount
Drives	
Max. No. hard disk drives	Up to 8×
Included hard disk drives	2× HDD 2.5", 500 GB, SATA
Optical drive	1× HP Slimline DVD-ROM, SATA
RAID	Automatic or RAID 0, 1, 10, 5 manual
Electrical Data⁶⁾	
Voltage supply	120/230 VAC, 50/60 Hz
Power consumption	Max. 750 W
Thermal output	Max. 2560 BTU/h
Mechanical Data⁶⁾	
Dimensions (W × H × D)	Approx. 445 × 87 × 750 mm (17.5" × 3.4" × 29.5")
Rack units	2U
Weight	Approx. 20 kg (44.1 lb; with 2× HDDs) Up to approx. 27 kg (59.5 lb; depending on the number of HDDs)
Ambient Data⁶⁾	
Temperature	+10°C up to +35°C (50°F up to 95°F)
Humidity	10 – 90% RH, non-condensing

4) Note the white paper **DVS Analysis Server & Camera Settings**.
 5) Note the white paper **DVS Analysis Server & Hardware Options**.
 6) Specifications by the manufacturer.

DVS Analysis Server

SEDOR® Video Analysis Server Software, Analysis and Recording, up to 24 IP Channels

Specifications SMAVIA Recording Server

Software

Operating system	Linux (proprietary, hardened)
Application	SMAVIA Recording Server
Application language	English, German, French, Spanish, Italian (others on request)
External management software	SMAVIA Viewing Client, SeMSy® III DMVC iPhone App (optional, license for PRemote-HD 003801 required)
External configuration software	PService, NetConfig3

Performance

Channels	Up to 24× IP-based video channels
Supported cameras	Dallmeier IP cameras via TCP / DaVid Protocol (Dallmeier Video Protocol) 3 rd -party IP cameras with RTSP streaming via UDP / RTP ⁷⁾
Track mode	Automatic
Video / audio compression	H.264 / G.722.1
Resolutions SD IP	QCIF (176 × 144), CIF (352 × 288), Half D1 (352 × 576), 2CIF (704 × 288), 4CIF (704 × 576), D1 (720 × 576)
Resolutions HD IP	720p (1280 × 720), SXGA (1280 × 960), 2MP (1600 × 1200), 1080i (1920 × 1080), 1080p (1920 × 1080)
Resolutions megapixel	3MP (2048 × 1536), 4MP (2336 × 1744), 5MP (2592 × 1944), up to 8MP
Frame rate per SD IP channel	6,25 / 12,5 / 25 fps
Frame rate per HD IP channel	6,25 / 12,5 / 25 fps
Frame rate per RTSP IP channel	Up to 25 fps
Max. total bit rate	Up to 120 Mbps
Bit rate per SD IP channel	Up to 4 Mbps
Bit rate per HD IP channel	Up to 6 Mbps
Bit rate per RTSP IP channel	Up to 6 Mbps

Features

Motion detection	Integrated
SmartFinder	Integrated
Audio for all channels	Integrated (depending on the camera)
iPhone Server	Integrated (PRemote-HD license 003801 required)

Recording⁸⁾

	3 rd -Party IP Camera	Dallmeier IP Camera
Transport protocol	RTP over UDP	TCP
Communications protocol	RTSP	DaVid
Recording control with timer	integrated	integrated
Recording mode Constant	integrated	integrated
Recording mode Contact	in preparation	integrated
Recording mode Motion	integrated	integrated
Recording mode Motion/Contact	in preparation	integrated
Switching recording mode by timer	--	integrated

Functions⁸⁾

	3 rd -Party IP Camera	Dallmeier IP Camera
Motion detection	integrated	integrated
SmartFinder	integrated	integrated
Appliance as video proxy	integrated	integrated
Appliance as multicast streamer	integrated	integrated
PRemote-HD	integrated	integrated
iPhone Server	integrated	integrated
Local PTZ control	in preparation	integrated
PTZ control with SMAVIA Viewing Client	in preparation	integrated
Camera configuration	integrated	integrated
Locking the camera configuration	--	integrated
Audio recording	--	integrated
Recording of multicast video streams	--	integrated
Processing with DVS Analysis Server	in preparation	integrated

7) Optional licenses **3rd Party Package** (004412 to 004418) required.
Note the white paper **SMAVIA & 3rd Party IP Cameras**. Version 8.8.3 is equivalent to DMS 2400 version 8.1.3.
8) Data refer to a fully equipped appliance. Optional licenses are required.