

# VMC-1: Driver Update for Workstations

Artista Display Driver Actualization after the Windows<sup>®</sup> “Creators” Update

SeMSy<sup>®</sup> III is a high-performance and future-proof video management system with optimum user friendliness. It offers a comprehensive range of functions, including the display of live images, various search options within the footage, the control of PTZ cameras and an easy archiving of relevant sequences.

The Video Management Centre VMC-1 is a modular system consisting of a joystick, keyboard, monitor and jog-shuttle and is designed for the control of the SeMSy<sup>®</sup> video management system via a SeMSy<sup>®</sup> workstation. It allows for an efficient control of the entire video management system including the intuitive control of PTZ dome cameras as well as the detailed evaluation of saved video sequences.

If the operating system version of a workstation is upgraded from Windows 10 version 1607 (Anniversary Update) to version 1703 (Creators Update), the Artista display drivers for the operation of the VMC-1 also have to be updated.

The Artista display driver version 9.3.1.54989 is required on a workstation running Windows 10 with Creators Update version to display the screen on the VMC-1.

This handout provides an overview for the uninstallation of the Artista display driver version 9.1.2.53442 and the installation of the new version 9.3.1.54989 after updating the Windows 10 operating system of a workstation from version 1607 (Anniversary Update) to version 1703 (Creators Update).

Follow the steps in the order as described here to ensure proper operation of a VMC-1 with Windows 10 in version 1703:

*Support for updating Windows 10 is available only from Microsoft Corporation.*

## Step 1: Uninstall Older Drivers

Before the Windows 10 version of a workstation can be updated to the Creators Update, the previous Artista display drivers have to be uninstalled first on the workstation with Windows 1607 version:

- ⇒ Remove the connected VMC-1 from the workstation by disconnecting the USB cable of the VMC-1 from the concerning workstation port.
- ⇒ Uninstall the previous Artista display drivers from the Windows **Control Panel**:
- ⇒ Open the corresponding Windows dialog via **Start > Control Panel > Programs and Features**.

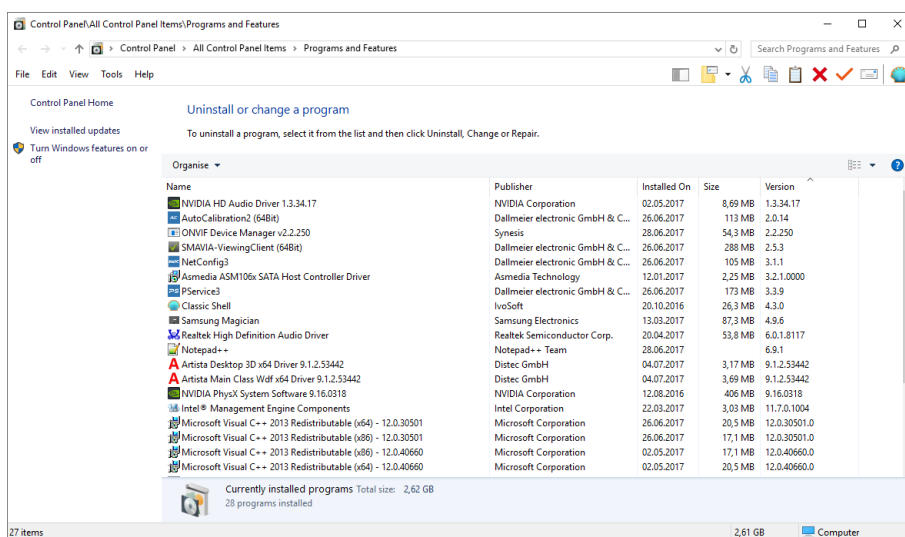


Fig. 1

All installed programs are listed in the dialog above.

# VMC-1: Driver Update for Workstations

## Artista Display Driver Actualization after the Windows<sup>®</sup> "Creators" Update

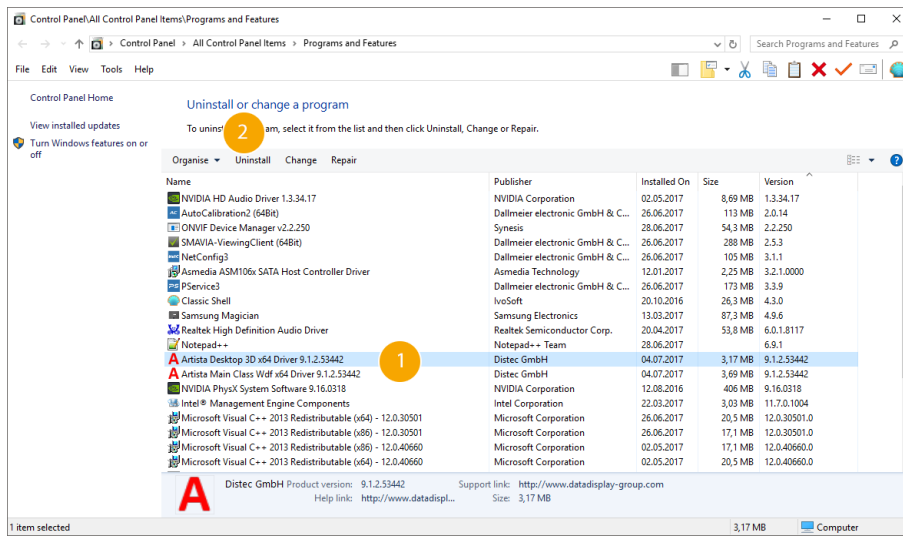


Fig. 2

- ⇒ Select the **Artista Desktop 3D x64 Driver 9.1.2.53442** entry 1.
- ⇒ Click **Uninstall** 2.

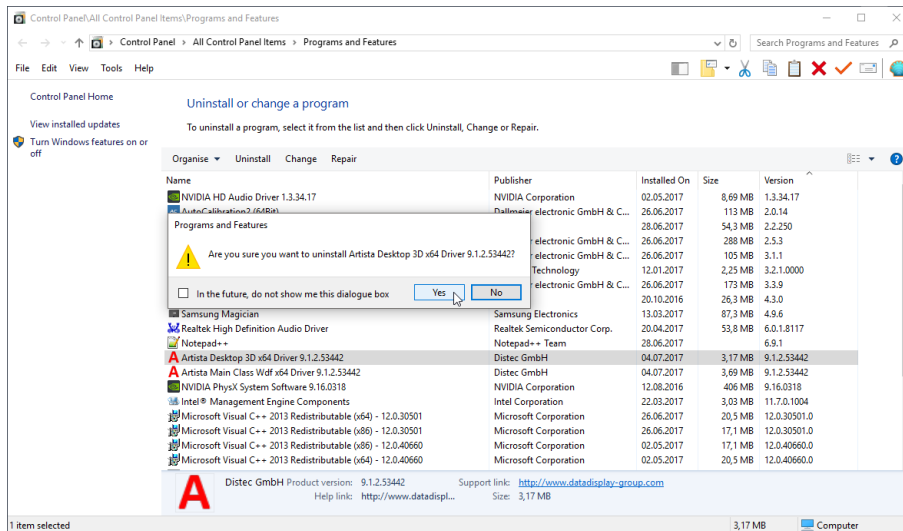


Fig. 3

- ⇒ Confirm the subsequent info dialog with **Yes**.

The uninstall process is running.

# VMC-1: Driver Update for Workstations

## Artista Display Driver Actualization after the Windows<sup>®</sup> “Creators” Update



The workstation has to be restarted to complete the driver uninstallation:

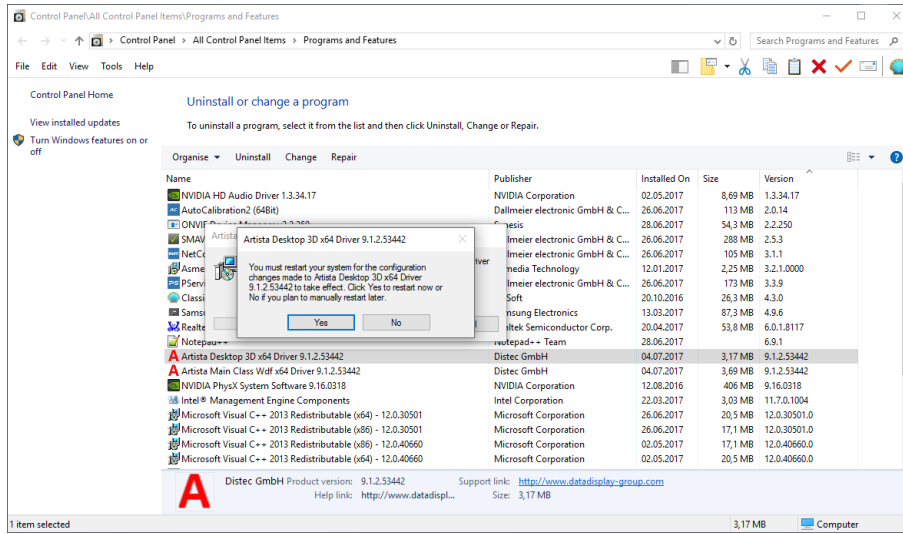


Fig. 4

⇒ Confirm the corresponding restart dialog with **Yes**.

The workstation will restart.

⇒ Open the **Program and Features** dialog after the restart again as described above.

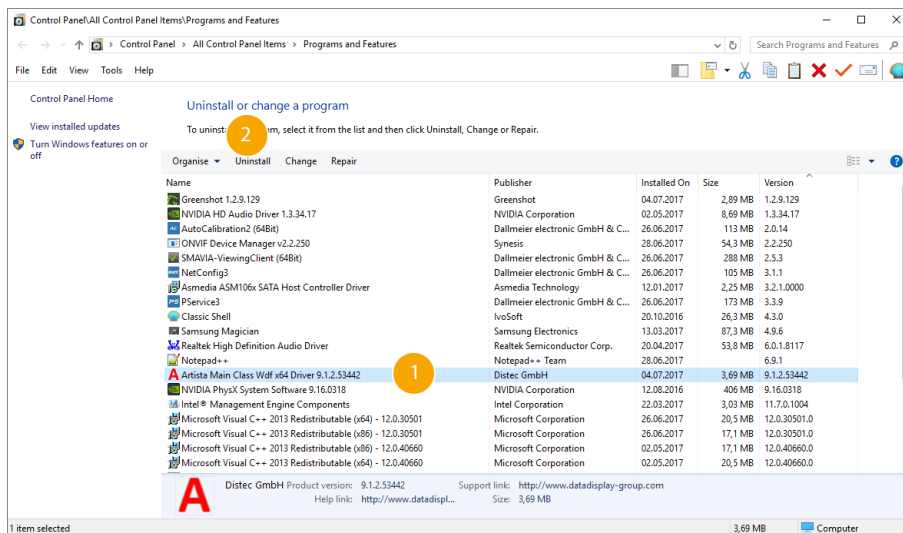


Fig. 5

⇒ Select the **Artista Main Class Wdf x64 Driver 9.1.2.53442** entry 1.

⇒ Click **Uninstall** 2.

# VMC-1: Driver Update for Workstations

## Artista Display Driver Actualization after the Windows™ “Creators” Update

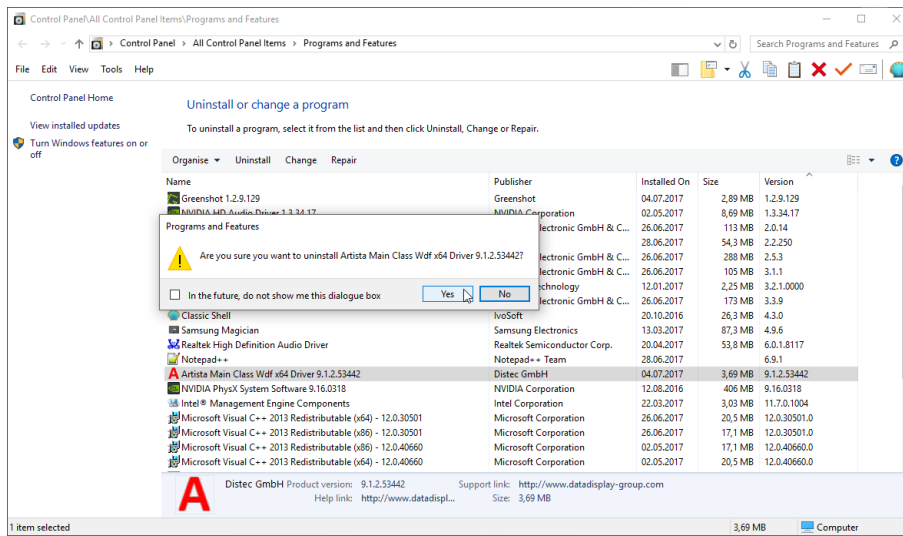


Fig. 6

⇒ Confirm the subsequent info dialog with **Yes**.

The uninstall process is running.

⇒ Perform a manual restart of the workstation after the uninstall process of the **Artista MainClass** driver.

### Step 2: Update Windows

The Windows 10 version (1607) of the workstation can now be updated to version 1703 after the Artista display driver uninstall.

Support for updating Windows 10 is available only from Microsoft Corporation.

⇒ Follow all necessary update steps as specified by Microsoft.

Installing the Windows10 Creators update (version 1703) may take some time.

⇒ Wait for the update installation to complete.

### Step 3: Installing the new Artista Display Drivers

If the update installation for Windows 10 version 1703 has been completed, the new Artista display drivers can now be installed.

Download the required **9.3.1\_win10\_1703.zip** driver file from [www.dallmeier.com](http://www.dallmeier.com) and unpack it.

Do not connect the VMC-1 to the workstation until the new Artista display drivers have been installed.

Two drivers must be installed: first the **Artista MainClass** driver, then the **Artista Desktop3D** driver. Observe this order.

# VMC-1: Driver Update for Workstations

Artista Display Driver Actualization after the Windows™ “Creators” Update

# SEMSy® III

⇒ Open the unpacked Artista file directory **9.3.1\_win10\_1703** with the file manager.

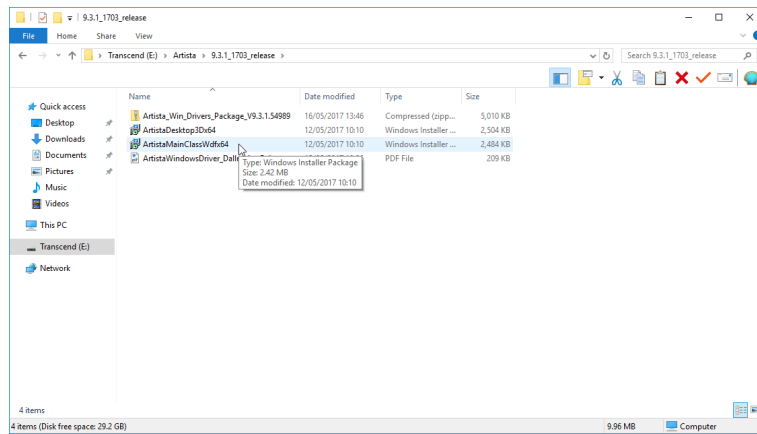
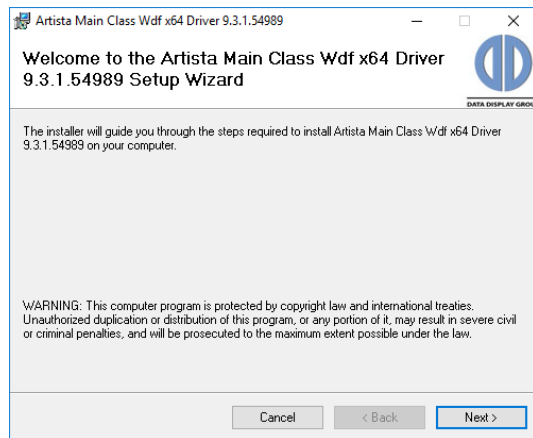


Fig. 7

⇒ Double-click the **ArtistaMainClassWdfx64.msi** file.

The driver installer is started by displaying the **Welcome** dialog:



⇒ Click **Next >**.

Fig. 8



⇒ Activate the **I Agree** check box to accept the license agreement.

⇒ Click **Next >**.

Fig. 9

# VMC-1: Driver Update for Workstations

Artista Display Driver Actualization after the Windows™ “Creators” Update

# SEMSy® III

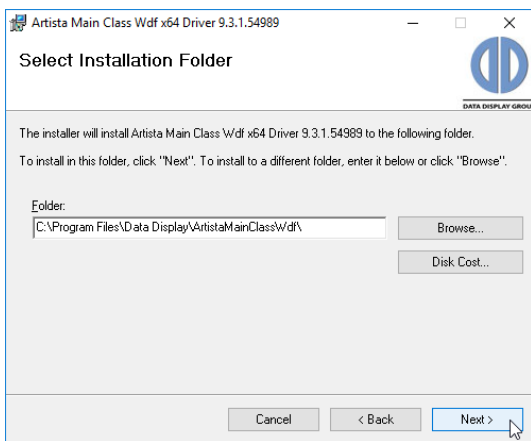


Fig. 10

The installation directory does not have to be changed in the normal case.

- ⇒ Accept the predefined settings.
- ⇒ Click **Next >**.

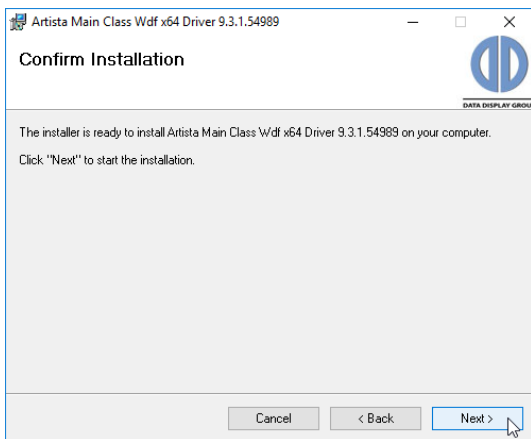


Fig. 11

The installer is ready to install the **Artista MainClass** driver.

- ⇒ Click **Next >** to start the installation process.



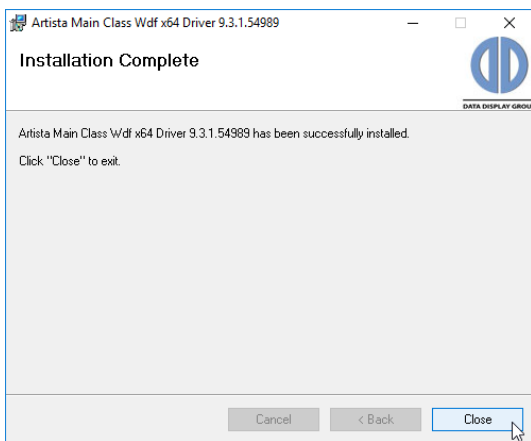
Fig. 12

- ⇒ Confirm the subsequent **Windows Security** dialog by clicking **Install**.

# VMC-1: Driver Update for Workstations

Artista Display Driver Actualization after the Windows<sup>®</sup> "Creators" Update

# SEMSy<sup>®</sup> III



The installation of the **Artista MainClass** driver is complete.

⇒ Click **Close** to finish the installation process.

Fig. 13

The **Artista MainClass** driver has been successfully installed. This can be checked in the **Programs and Features** dialog:

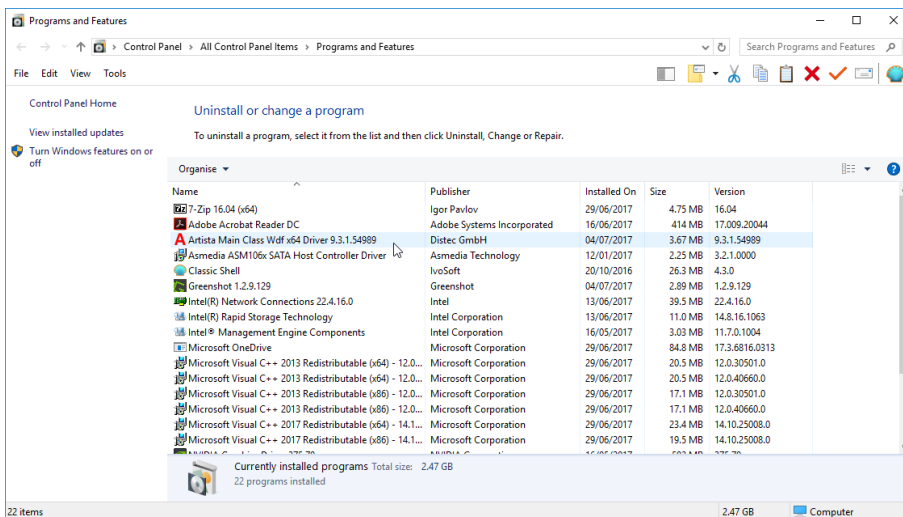


Fig. 14

In the next step, the **Artista Desktop3D** driver has to be installed.

⇒ Open the unpacked Artista file directory **9.3.1\_win10\_1703** with the file manager.

# VMC-1: Driver Update for Workstations

Artista Display Driver Actualization after the Windows<sup>®</sup> “Creators” Update

# SEMSy<sup>®</sup> III

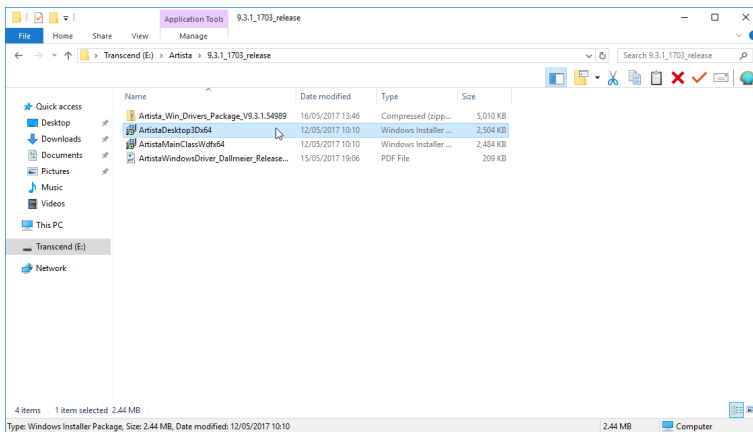


Fig. 15

⇒ Double-click the **ArtistaDesktop3Dx64.msi** file.

The driver installer is started by displaying the **Welcome** dialog:

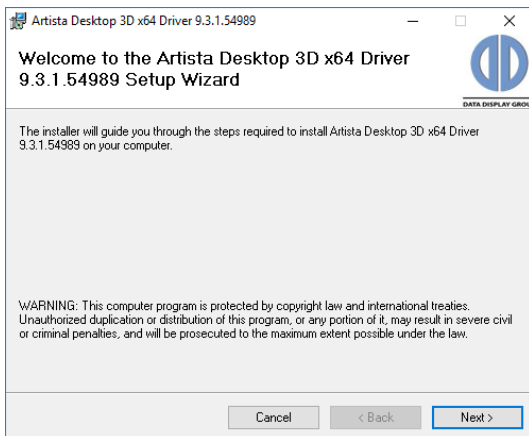


Fig. 16

- ⇒ Click **Next >** and follow the procedure for installing the **Artista MainClass** driver to install the **Artista Desktop3D** driver.
- ⇒ Follow the installation dialogs and complete the installation process as described above.

The dialog for restarting the workstation is displayed automatically after completing the **Artista Desktop3D** driver installation:

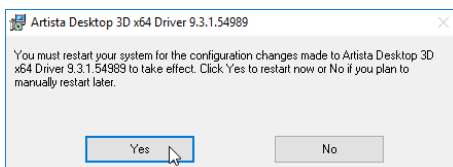


Fig. 17

⇒ Confirm the system restart with **Yes**.



# VMC-1: Driver Update for Workstations

## Artista Display Driver Actualization after the Windows<sup>®</sup> “Creators” Update



⇒ Check the successful Artista display drivers installation via the **Programs and Features** dialog after the workstation restart **1**.

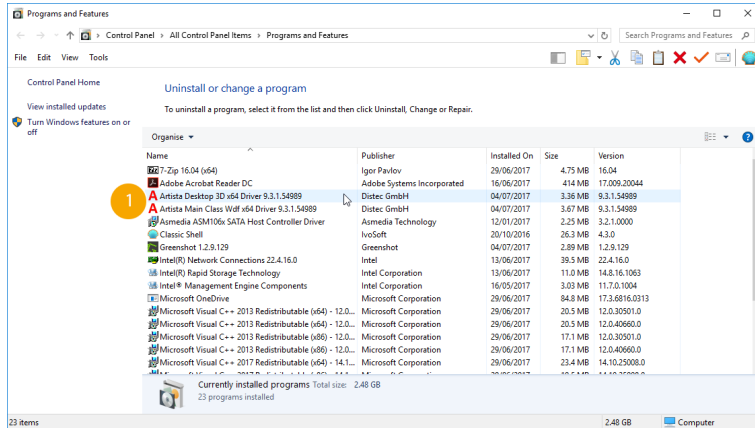


Fig. 18

The following entry appears in Windows Device Manager after installation:  
**Artista Display Devices > Artista 0000 (640×480)** **2**

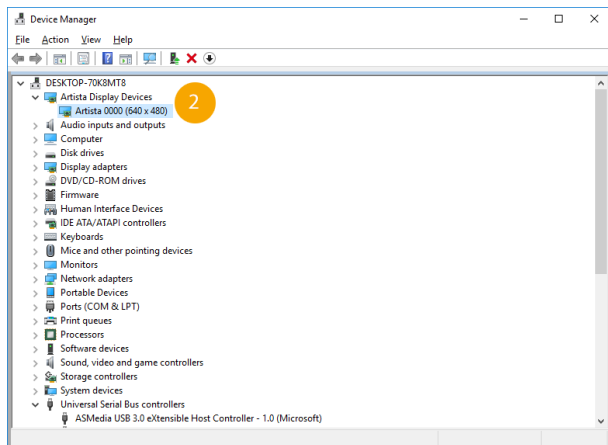


Fig. 19

### Step 4: Connect the VMC-1 to the Workstation

The VMC-1 can now be re-connected via USB to the workstation.

The VMC-1 is detected automatically and can be operated after the start of the application SeMSy<sup>®</sup> III.



Fig. 20 Detail Windows 10 info area

When the VMC-1 console is connected, the Artista icon **3** is activated (red) in the info area. An Infobox also shows the USB connection for a mouseover.