

DBHWGC – Pole Mount Adapter

Pole Mount Adapter DBHWGC for Pole Diameters 210–225 mm (8.3–8.6")



Features

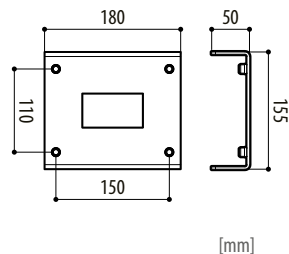
- Suitable for pole diameters 210–225 mm (8.3–8.6")

Compatibility Wall Mount Bracket

- WBMA*
- WBOVA2*

* install with WCPA – Support Plate (Item No. 004386)

Specifications	
Construction material	Steel
Load rating	25 kg (55 lb)
Color	RAL 9002 (grey white)
Weight	1.2 kg (2.6 lb)



Mounting Accessories

004388	DBHWGC – Pole Mount Adapter Pole mount adapter DBHWGC for pole diameters 210–225 mm (8.3–8.6")
--------	--