

WCPA – Support Plate Adapter

Reinforcing Support Plate WCPA for Adapting the Wall Brackets WBMA and WBOVA2



Features

- Suitable for indoor and outdoor installations
- Wall mounting or on modular adapters

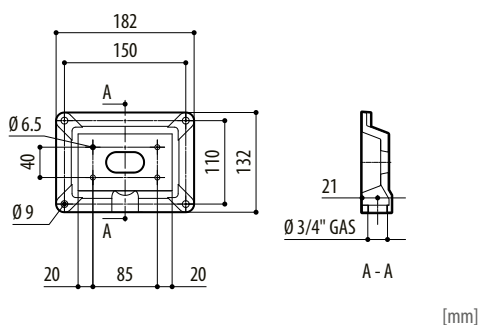
Compatibility Wall Mount Bracket

- WBMA
- WBOVA2

Compatibility Modular Adapters

- DBHWGC – Pole Mount Adapter (Item No. 004388)

Specifications	
Construction material	Die-cast aluminium
Load rating	50 kg (110 lb)
Color	RAL 9002 (grey white)
Weight	0.6 kg (1.3 lb)



[mm]

Mounting Accessories

004386 WCPA – Support Plate Adapter
Reinforcing support plate WCPA for adapting the wall brackets WBMA, WBOVA2 and IR housing wall mount bracket